



THE UNIVERSITY OF
TEXAS AT TYLER

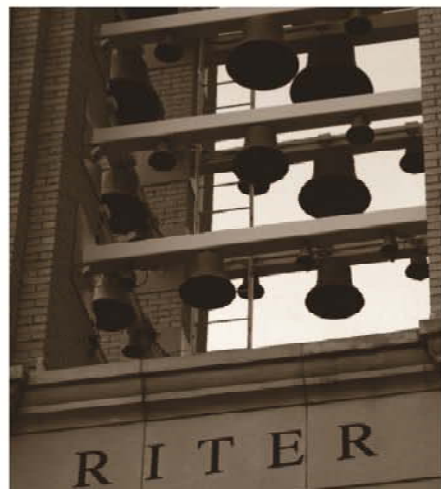
Legislative Appropriations Request Fiscal Years 2012 and 2013

The University of Texas at Tyler
Rodney H. Mabry
President

September 28, 2010



THE UNIVERSITY OF
TEXAS AT TYLER



UT Tyler at a Glance

- Fall 2010 enrollment = record 6,483
- Students from 38 states and 31 nations
- Almost half of UT Tyler students are first generation college students
- Third highest nursing producer in the state



THE UNIVERSITY OF
TEXAS AT TYLER



UT Tyler's Vision

- Provide a high quality undergraduate education for flagship-capable students
- Serve fourteen-county region with historically low four-year university participation rate
- Become a leader in hybrid, asynchronous student-friendly academic courses



THE UNIVERSITY OF
TEXAS AT TYLER



Serving Our Community

- 40% of all nurses in East Texas are UT Tyler graduates
- One in five East Texas schoolchildren are taught by UT Tyler graduates
- Strong community ties
- Successful articulation agreements with area community colleges



THE UNIVERSITY OF
TEXAS AT TYLER

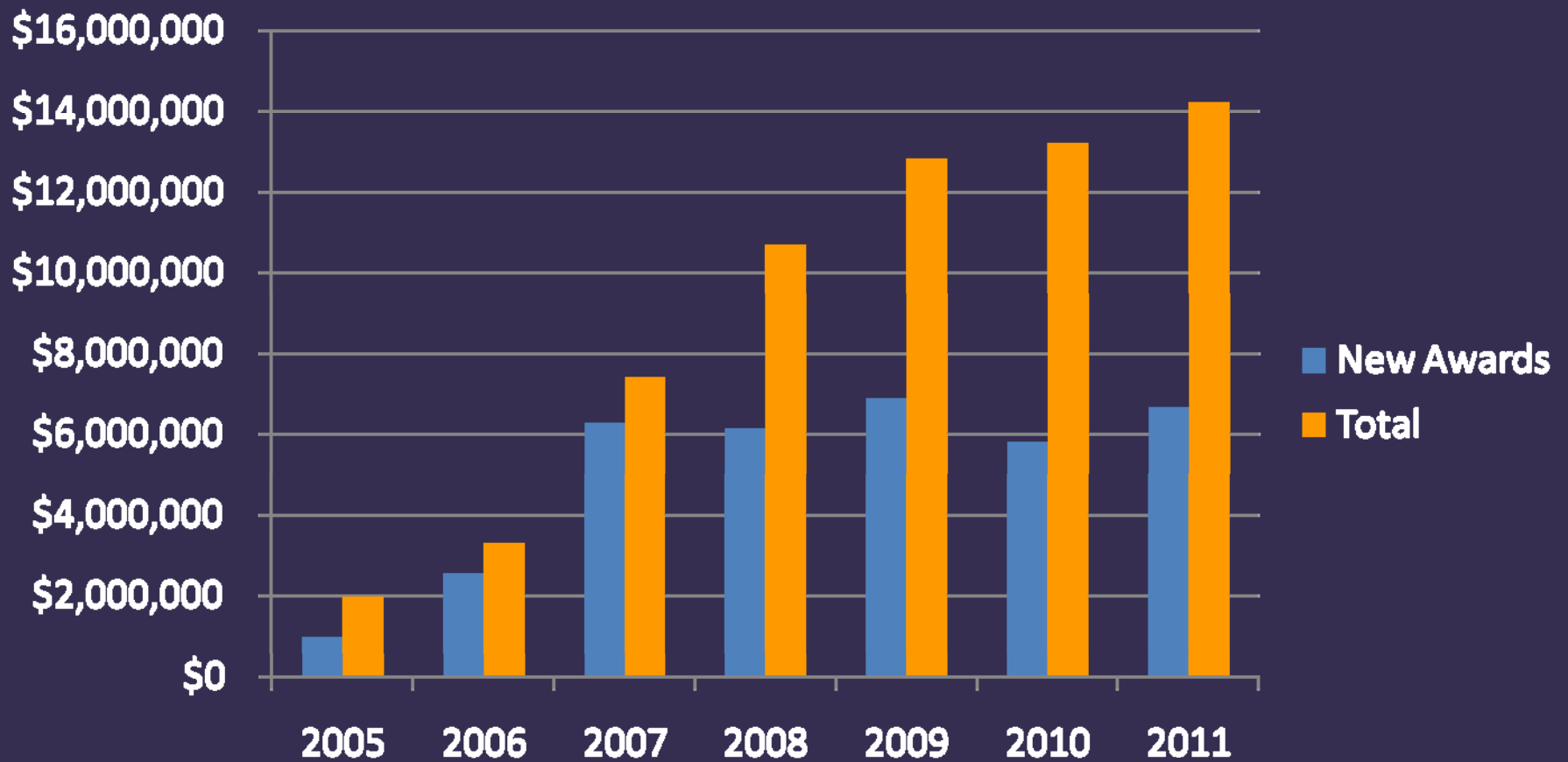


UT Tyler: A Good Steward of State Funding

- Faculty outside research increasing annually
- Faculty teaching productivity increasing annually
- Operating expenses gaining efficiency



Faculty Research Productivity

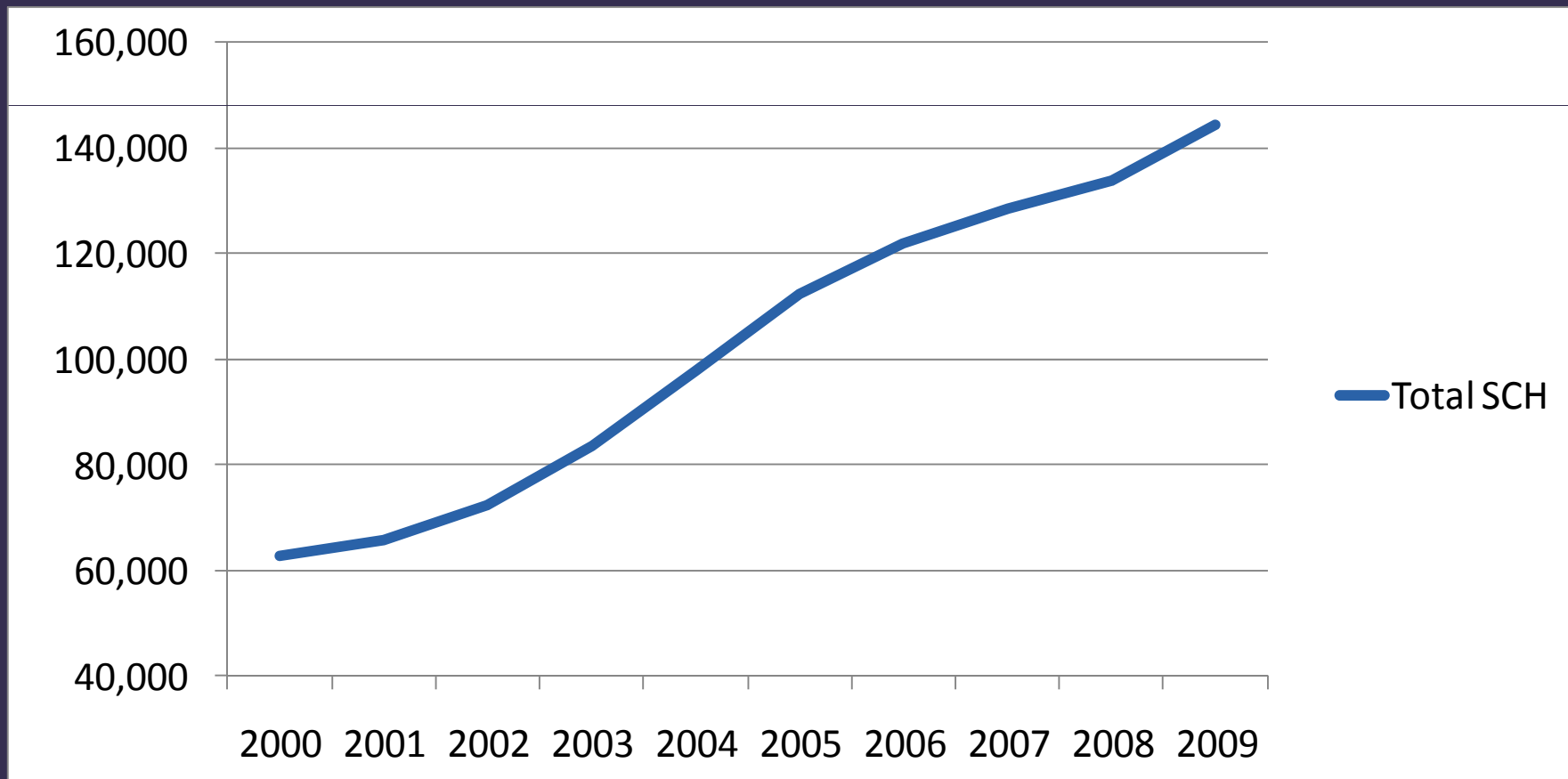




THE UNIVERSITY OF
TEXAS AT TYLER

Faculty Teaching Productivity

Total Semester Credit Hours

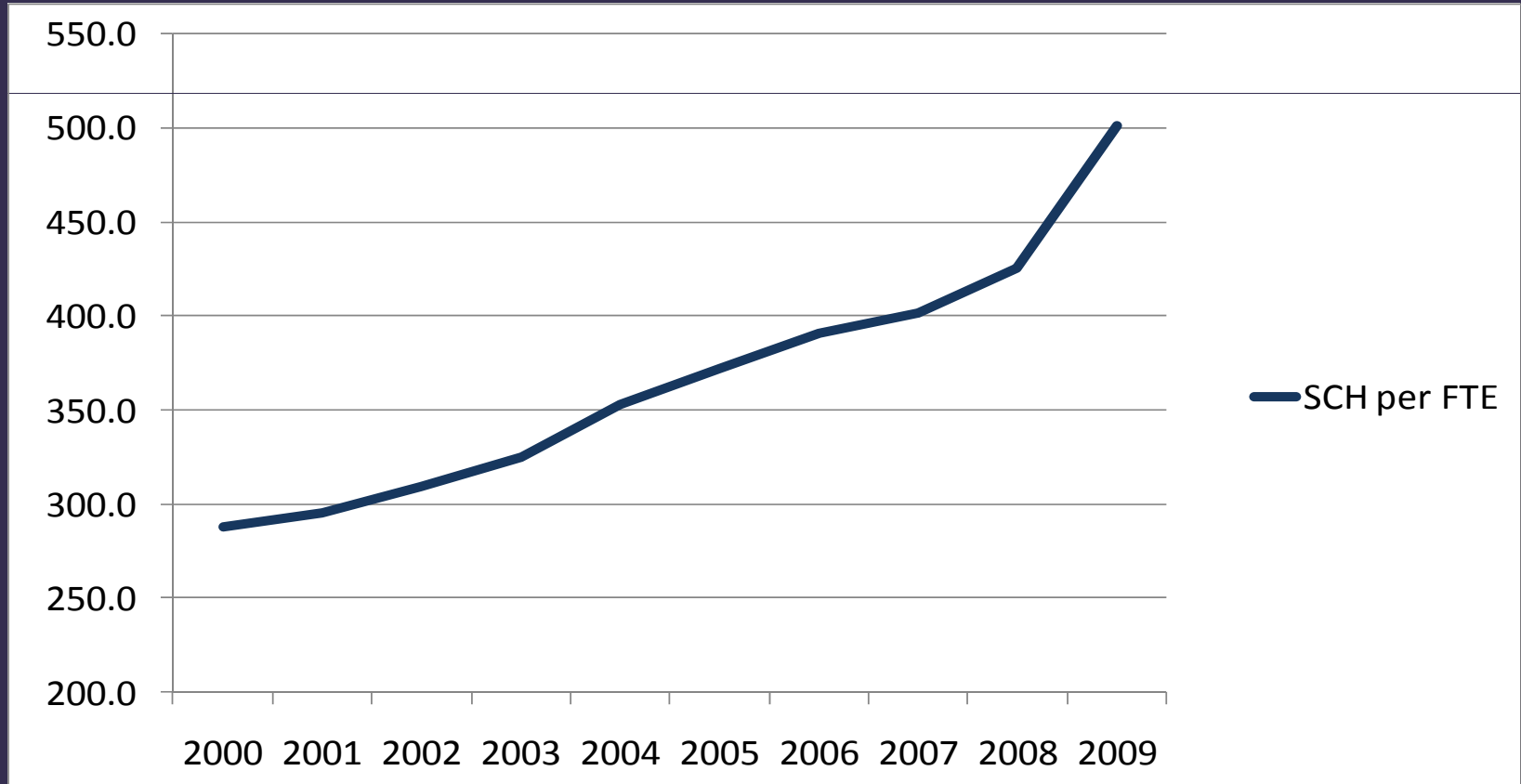




THE UNIVERSITY OF
TEXAS AT TYLER

Faculty Teaching Productivity

Semester Credit Hours per FTE

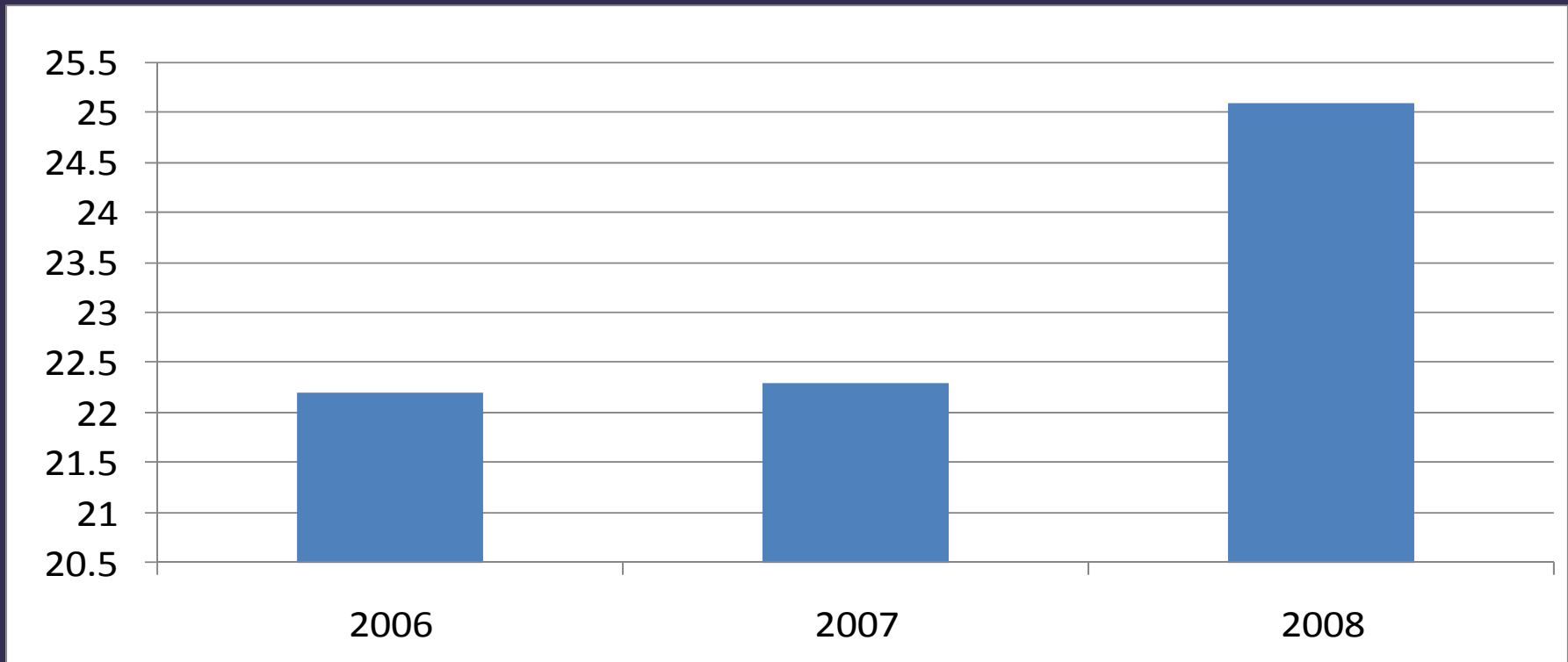




THE UNIVERSITY OF
TEXAS AT TYLER

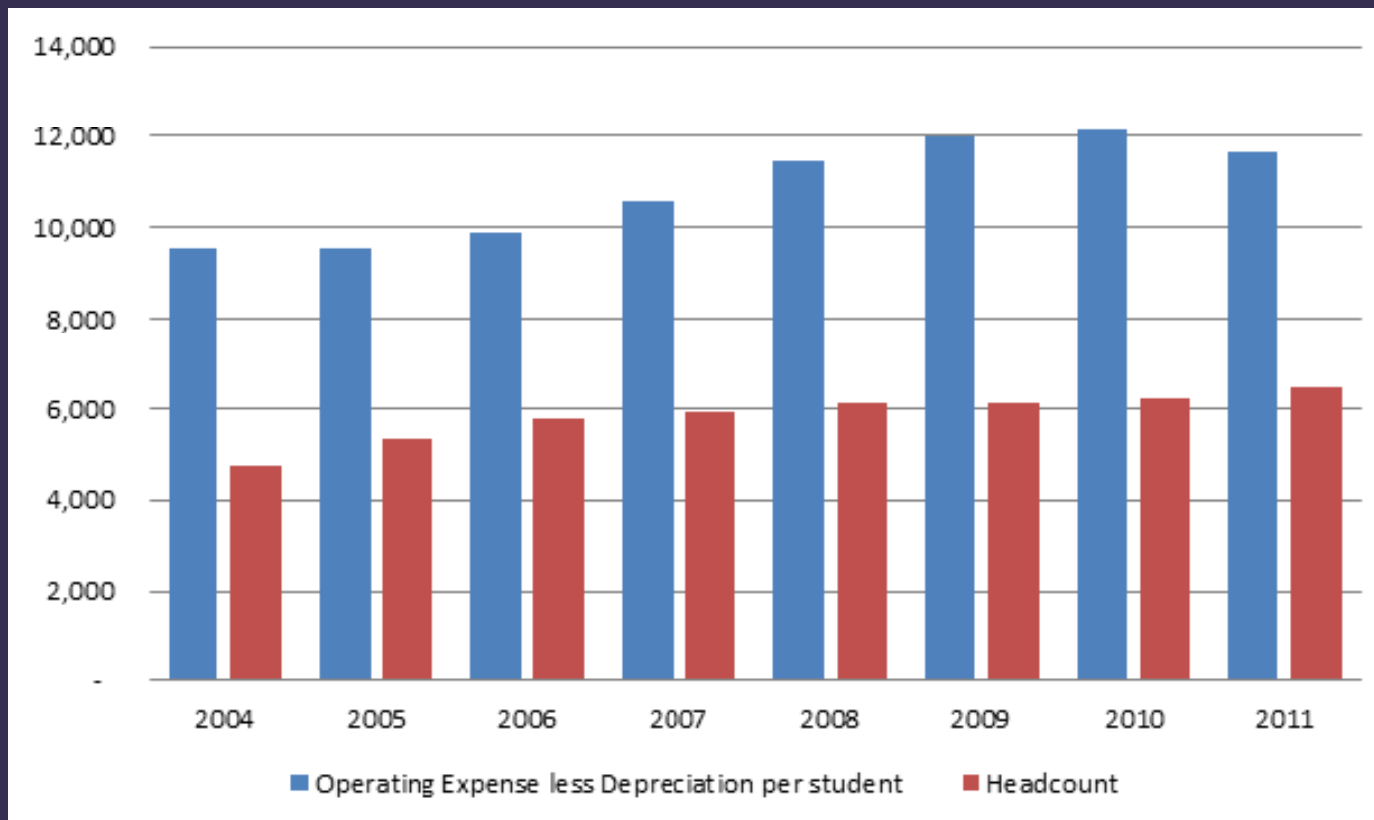
Faculty Teaching Productivity

Average Number of Teaching Load Credits per FTE
Instructional Faculty





Operating Expenses to Headcount





THE UNIVERSITY OF TEXAS AT TYLER

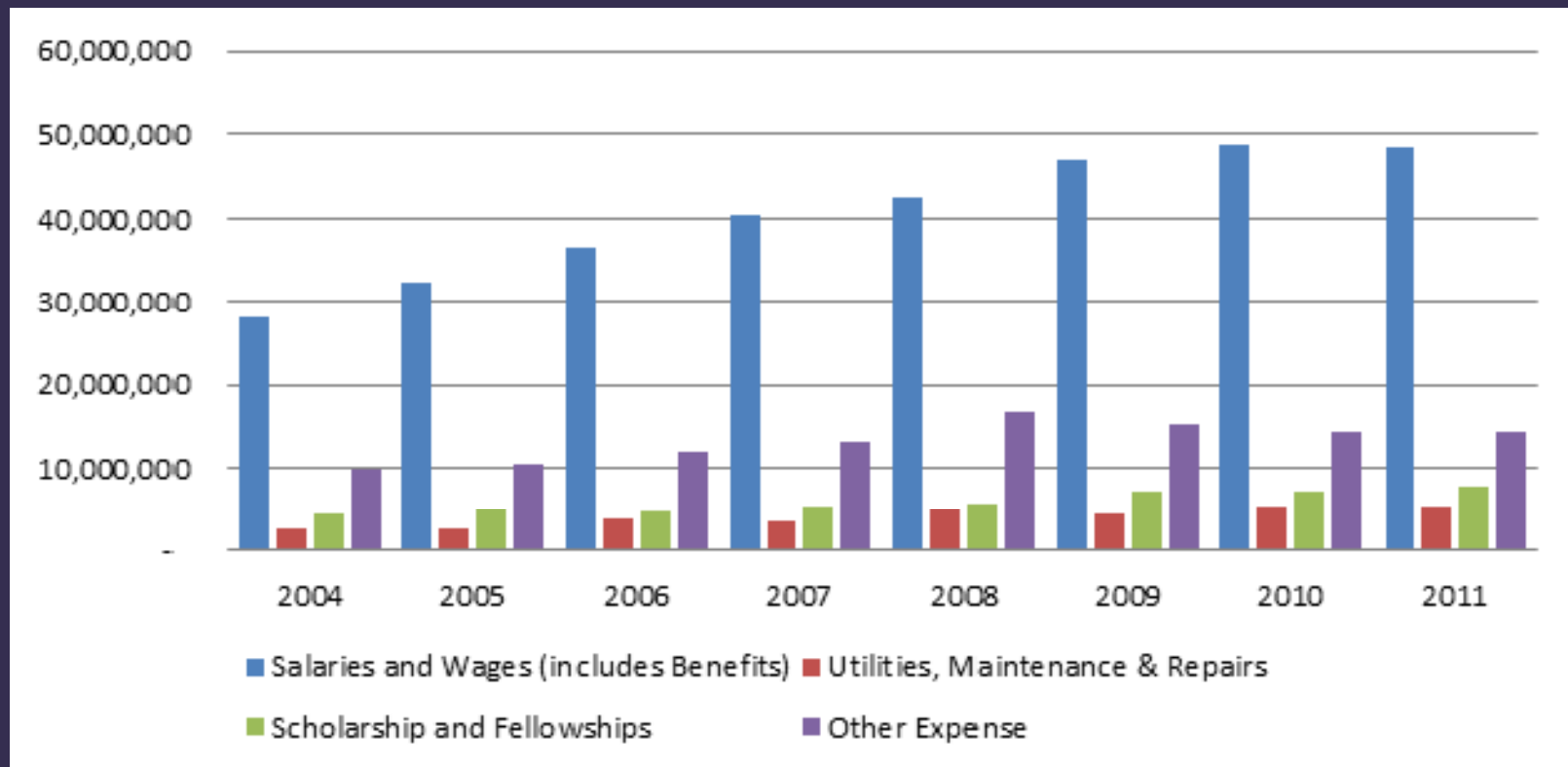


Impact of 5% Cut

- Reduced academic quality
 - Increased class sizes
 - Faculty/staff hiring freeze
 - Eliminated some part-time positions
 - Reduced faculty/staff continuing education
- Served fewer students; slowing growth
- Abandoned planned construction projects
- Reduced working conditions
 - Higher summer temperatures
 - Lower winter temperatures
 - Eliminated hot water in most buildings
- Reduced wages for some part-time student employees

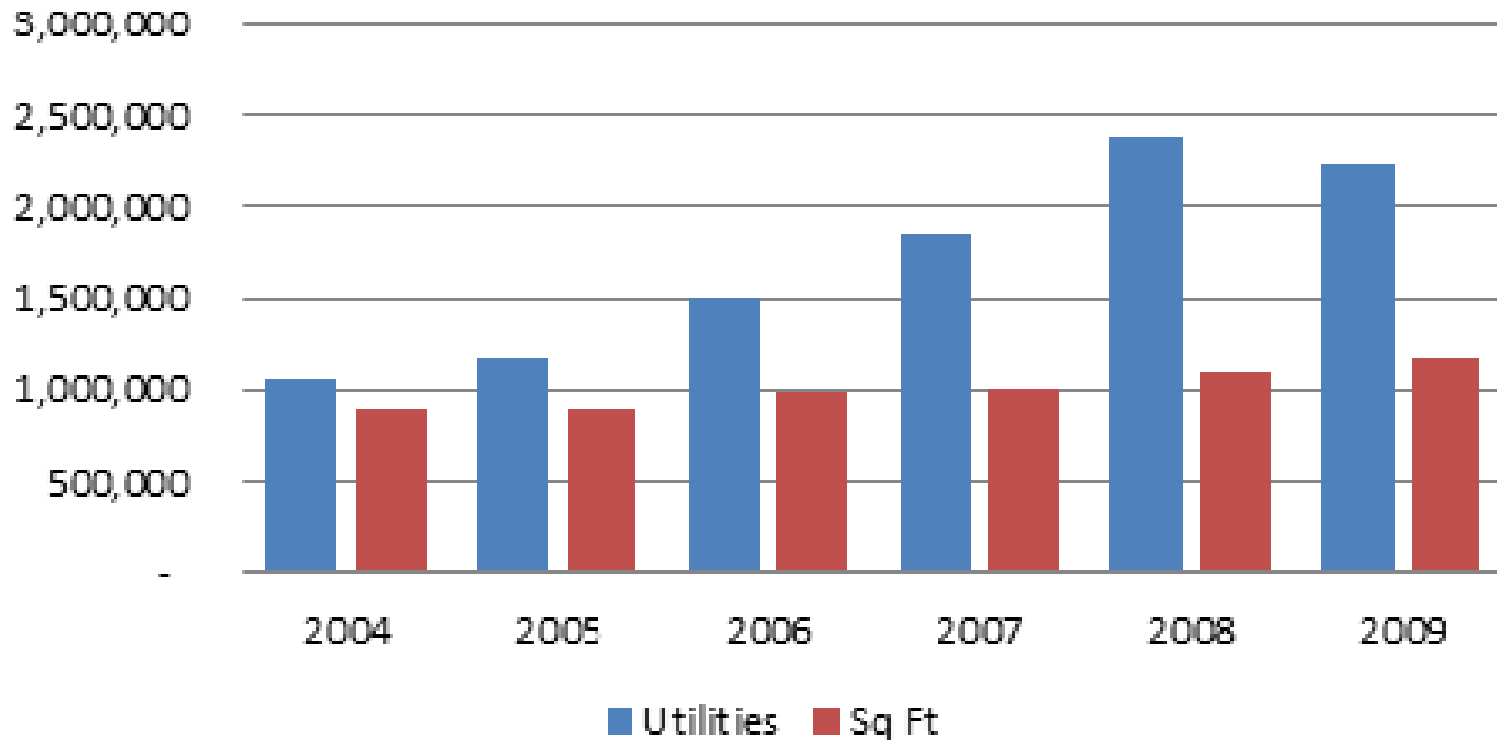


Operating Expenses Excluding Depreciation





Utilities





THE UNIVERSITY OF
TEXAS AT TYLER



Funding Priorities

- No additional reductions
- Continuance of current special items
- Texas Program for Access through Technology



THE UNIVERSITY OF
TEXAS AT TYLER

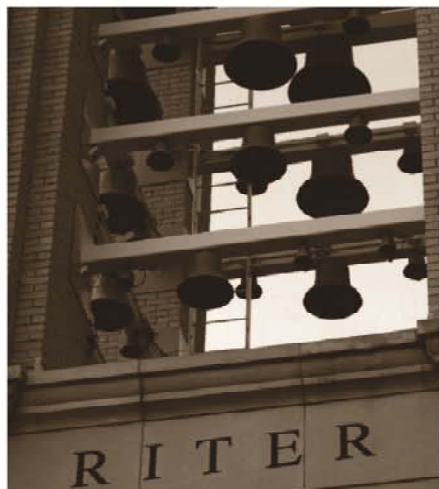


Four Year Start-Up Operations

- UT Tyler still starting up
- Formula funding not always adequate for small schools
- Low nursing student-to-faculty ratio
- Successful track record



THE UNIVERSITY OF
TEXAS AT TYLER



Longview Campus

- Assists in reaching Closing the Gaps goals by increasing UT Tyler's reach in the area
- 46% increase in nursing students AY 2010
- Plans for expanded course offerings
- Future home to a Continuing Professional Education Center



THE UNIVERSITY OF
TEXAS AT TYLER



Institutional Enhancement

- Successful programs thus far
- Global Awareness Through Education
- Honors College
- Supplemental Instruction Program



THE UNIVERSITY OF
TEXAS AT TYLER



Texas Program for Access through Technology

- Modern mode of course delivery that utilizes technology to greatest extent possible
- Goal is to have 75%-80% of courses taught in hybrid format
- Classes would meet 50%-70% of current face-to-face time, saving building space
- Pilot project would show expected gains in student learning and savings to the state



THE UNIVERSITY OF
TEXAS AT TYLER

THE END!

