

CAPITOL OFFICE
E1.608
P.O. BOX 12068
AUSTIN, TEXAS 78711
PHONE: 512/463-0129
FAX: 512/463-0218
TDD: 1-800-735-2989
E-MAIL: eliot.shapleigh@senate.state.tx.us

COMMITTEES
STATE AFFAIRS - VICE CHAIR
SPECIAL COMMITTEE ON
BORDER AFFAIRS
VETERAN AFFAIRS
& MILITARY INSTALLATIONS



IV. ... Admin ...
DISTRICT OFFICE
800 WYOMING AVENUE, SUITE A
EL PASO, TEXAS 79902
PHONE: 915/544-1990
FAX: 915-544-1998
E-MAIL: eliot.shapleigh@senate.state.tx.us

ELIOT SHAPLEIGH
TEXAS SENATE
DISTRICT 29
EL PASO COUNTY

*handed out
@ 11/16/00
BOR mtg.*

Border Health Institute

Status Report October 2000

*11-16-2000
req. to
participate
w/ committee
in next 60
days.*

Vision

Helen Keller was once asked:

“Is there anything worse than
blindness?”

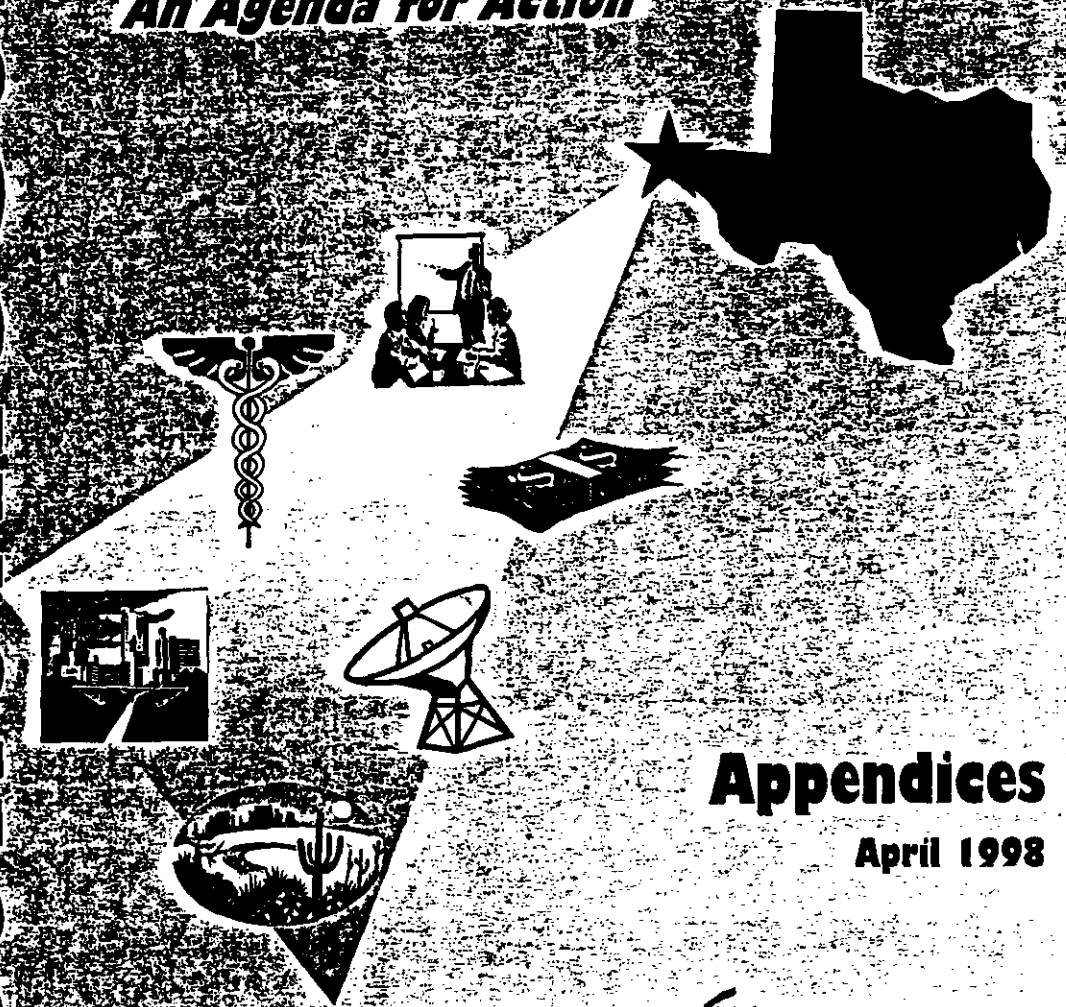
“Only one thing,” she answered,
“**Lack of Vision.**”

ECONOMIC SUMMIT



Priorities for Growth

An Agenda for Action



Appendices

April 1998



BORDER HEALTH INSTITUTE INITIATIVE

Title: Border Health Institute – a comprehensive physical complex dedicated to research, service, and education of our community and the Americas.



Motivation: 40% of El Paso's children (50% Hispanic children) are uninsured. The border has an insufficient supply of health professionals including primary care physicians, nurses, and allied health professionals. Research and Development funds targeted to Border specific medical research are diverted to other areas of the state with better known medical centers.

- Unique opportunity in El Paso to study and act upon chronic, infectious and genetic-based diseases that exist here due to our geographic location ;
- Second largest NAFTA corridor representing a gateway for infectious disease traveling to other parts of the USA – key concept for State and Federal support;
- 4 of 10 children and 1 of 3 adults in the region have no insurance and lack access to basic primary care and prevention services; resulting in some of the highest healthcare costs in the country.
- Lowest number of health professionals per capita (as a region) in the country.

Outcome of this will be to:

- Significantly improve the health state of the citizens of our community, thereby ultimately decreasing use of public health services, and;
- Create the biggest identifiable increase in Per Capita Income in a top 10 industry by increasing job opportunities throughout the Health Care field - professionals, technical jobs, and suppliers.

Objectives: To focus health education and research on the Border area; Border-specific disease prevention and management (Diabetes, Exotic Diseases, and Infectious Diseases such as TB and Hepatitis).

To develop adequate health professional corps to address border health needs.

To create a state-of-the-art Border Health Institute:

- world renowned research

- creation of new and existing industry
- creating larger markets (existing and new)
- decrease cost to public health
- increase professional and technical employment
- training and development of health and related professions

Description: Utilizing the tobacco settlement funds designated for a Border Health Initiative, build a world-class health institute, which includes a Women's & Children's Hospital. This institute is designed to educate and/or train medical professionals to full credentials with the capacity of attracting and accomplishing on-site research specific to the Border area. The Institute will house respected medical personnel both as faculty (teachers and researchers) and service providers. It will collaborate with existing El Paso medical education and service delivery and in addition, it will attract new projects and programs that will grow the health-related industry, thereby better serving the four million people from Chihuahua to Las Cruces as well as producing more and better job opportunities.

Obstacles: Lack of articulated, shared vision for a Border health system.
The potential need for facility construction.

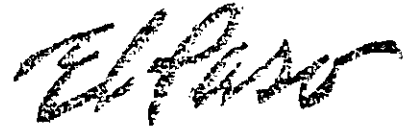
Turf: overlap of educational fields, "academic sharecropping" and current entrenched diversion of appropriated funds, grant funds and faculty practice plan funds as well as current local methods of service delivery might discourage collaboration. Competition from other Healthcare providers Private sector buy-in.

Lack of community support.

Key Next Steps and Dates:

- Stakeholder meeting (designated Task Force 3/12/98. Forum on this issue ASAP- supported by Economic Summit Steering Committee);
- Incorporate existing healthcare initiatives;
- Final business plan by June 1, 1998;
- Integrate City/County Health into process;
- State level designation and funding of Border Health Institute by 4/30/99;
- Phase I facility ground-breaking by September, 1999;
- Federal level support for initiative by 1/2003.

El Paso Economic Summit 1998



Resources: UTEP

Texas Tech University Health Science Center
El Paso Community College
Community Partnership Institute
Thomason (EPCHD)
Community Health Clinics
El Paso City-County Health District
Tobacco Settlement
Private and For-profit Community Foundations
Texas Legislature
Federal Government
International Medical Community

Leadership:

Texas Medical Society – El Paso Branch
Federal, State, County (Thomason) and City Delegations
Community Based Clinics
Texas Tech, UTEP, EPCC
EPISO & other community-based organizations
Paso del Norte Foundation
Other Private Foundations

RESOLUTION

WHEREAS, El Paso, in order to best meet local and regional Border needs, should create local control and governance relative to healthcare; and

WHEREAS, El Paso should focus local medical education, research and service institutions and assets on unique Border needs; and

WHEREAS, El Pasoans should advocate for funding and programs to meet unique local and regional Border challenges especially in the areas of infectious diseases, public health and Hispanic health issues; and

WHEREAS, El Paso should create an economic development opportunity and synergy in healthcare, one of the fastest growing job clusters in our region; now, therefore, be it

RESOLVED, That the Vision Committee for a Border Health Initiative of the El Paso Economic Summit approve and support the Paso del Norte Regional Health Institute (RHI), a comprehensive locally controlled health complex dedicated to research, service and medical education to improve the quality of life in the El Paso region provided that the RHI will not create any new taxing entity, nor will it affect any current powers of authority vested in the members of the Governing Body; and, be it further

RESOLVED, That a copy of this Resolution be prepared for publication and distribution so that all El Pasoans and those interested in El Paso know and recognize the importance of this matter.

Maria Elena A. Flood
Maria Elena A. Flood, Chair
Vision Committee

Elaine Barron M.D.
Elaine Barron, M.D. Vice-Chair
Vision Committee

[Signature]
Margaret Dechert
Jill Parker
Leticia Paez
Adriana D. Barrera
Jose Rodriguez
Pete J. Duarte
[Signature]
[Signature]
CARLOS A. GUTIERREZ, MD.
[Signature]

[Signature]
[Signature]
Jesse A. Gomez
[Signature]
Mark R. Paul
[Signature]
[Signature]
[Signature]
[Signature]
[Signature]

**CASE STATEMENT
FOR
PASO DEL NORTE REGIONAL HEALTH INSTITUTE**

BY THE ECONOMIC SUMMIT TASKFORCE ON REGIONAL HEALTH

July 6, 1998

PROPOSAL: *Geography and demography--they make El Paso-Ciudad Juarez-Southern New Mexico (Paso del Norte Region) the obvious location as a center for regional health coordination, education, and research.*

At the El Paso Economic Summit in February 1998, a broad-based committee of El Pasoans joined forces to study regional health conditions, area coordination, policymaking and research. After a comprehensive review of regional challenges and resources, the Summit participants decided to create a central entity to coordinate regional health studies, planning, education and research. The entity will be known as the **Paso del Norte Regional Health Institute (RHI)**.

The Paso del Norte Regional Health Institute:

1. RHI will capitalize on locally available resources, talents, and skills through a collaborative including the University of Texas at El Paso (UTEP), Texas Tech University Health Sciences Center - El Paso (TTUHSC-EP) and the El Paso Community College (EPCC).
2. RHI will rely on El Paso's existing educational infrastructure, private and public health-related systems, and federal, state, local and non-governmental funding for support.
3. RHI will focus on applied research, education, and service, guiding the development of appropriate strategies to meet the identified needs of burgeoning Border populations.
4. RHI will link:
 - a basic science, health professions education and applied research capabilities currently at UTEP;
 - b applied clinical and other scientific research and medical education currently underway at TTUHSC-EP;
 - c allied and public health education and research capabilities at EPCC; and
 - d will also support education and private research related to primary care service available through practicing physicians' offices, William Beaumont Army Medical Center, regional hospitals, and clinics. Current public and private clinics, at their discretion, will be incorporated into the RHI's education, service, and applied research agenda.
5. No resources will be used for the provision of direct health care services.
6. RHI will also serve as a clearinghouse for existing academic initiatives and as a catalyst to attract relevant education, service, and research efforts to improve the region's health status. RHI will collect relevant data, produce pertinent reports, and foster collaboration with recognized experts, universities, consulting firms and health care leaders.
7. RHI will focus on regional health issues such as infectious and chronic disease as well as environmental health. On-going development of culturally sensitive health care strategies in response to the future needs of the State of Texas and, indeed, to changing national demographics will be important to the evolving health care delivery system.
8. RHI research findings, education and service activities will provide a basis for policy analysis in today's dynamic health care environment and on health issues of regional, national, and international significance. RHI coordination with other existing policy development initiatives in the region and the development of a continuum of comprehensive disease prevention and health care services that reach families will be

a model for replication by other communities.

9. The RHI will begin its work as soon as practicable.

THE CASE for RHI: This region is the geographic center of the U.S./Mexico border. The area's combined metropolitan population is more than two million and includes the largest integrated cross-border communities. The region is also unique in the multi-jurisdictional issues presented by the intersection of three states, two countries, and dozens of county and municipal boundaries. The existence of so many international, state and local jurisdictions within one region, with a radius of 50 miles/80 kilometers, makes the El Paso area a unique case study in regional illnesses and in regional health coordination, education and research. No other area on the Border presents such a jurisdictional or administrative challenge. Third World health conditions exist on both sides of the Border in all four counties of the region and in the several cities within its boundaries. The region's resources and problems are indivisible. It shares common air/water resources and a long history. The area has a common economy, a common trade corridor, trade relationships that are hundreds of years old, and close family and cultural ties. Increased NAFTA trade has exacerbated regional health problems. Problems exist region-wide that cannot be addressed effectively by any one jurisdiction and should not be addressed in a piecemeal fashion.

The region's health care institutions developed over the years through separate agencies and systems throughout its various jurisdictions, some administered from distant locations. Coordination among the area's health care institutions has been less than optimal with much of the research conducted at distant locales far from the border. Regional health needs have grown too large and complex for the area to waste any opportunity to attract scarce resources. Regional, bi-national, and interstate planning and coordination are now critical to state, even national priorities. The region must also formulate common health goals and policies. It must present a unified consensus agenda to advocate for resources from federal and state agencies. The need for region-wide study and coordination has been identified in education, water usage, air and water quality resources, transportation, trade, law enforcement and in a number of other areas. In several of these areas, commissions have been created to address regional needs. The need for regional planning and coordination in health grows more critical each day.

SOLUTION: As proposed, the RHI will be a consortium to coordinate the activities of existing regional institutions delivering health care or health education. Its operations will increase the efficiency of its components by streamlining existing activities and by providing needed guidance and coordination to eliminate unnecessary or duplicate services. The RHI will plan and coordinate the region's general health needs, and identify, fund and assign research projects and health initiatives unique to the region.

Through its creation, RHI will make collaboration and communication a reality. It will use and encourage the continued development of the region's already substantial expertise in regional health issues. Recognizing that the best health policy is one formulated by those from this area who possess knowledge of this region's needs and resources, the Economic Summit Taskforce on Regional Health emphatically underscores its opposition to regional studies conducted by institutions far from the Border when expertise already exists in El Paso.

The RHI will assess regional health requirements and conditions in El Paso County, Northern Chihuahua and Southern New Mexico. The RHI will fund, coordinate, conduct forums and conferences related to its mission as well as serve as a clearinghouse and data center for materials and information pertinent to border health issues. The Economic Summit Taskforce on Regional Health fully intends that the RHI become a key resource for anyone interested in regional health and illnesses occurring in high rates among Hispanics and in the border region.

The RHI work will be useful to those near and far who need assistance in developing policies or strategies in health policy, disease prevention and health care delivery.

The operations of the RHI will be undertaken by its member institutions. As part of its initial legislative program, the Economic Summit Taskforce on the Regional Health will propose the establishment of a state-funded RHI located in El Paso under local administration. RHI members will study and propose other initiatives to reduce statutory, regulatory, and other obstacles to regional research, planning, and coordination with operations across state or national boundaries.

The RHI will not create a new taxing entity, nor will it affect any current powers of authority vested in the individual members of the Governing Body.

GOVERNING BODY

The governing body of the RHI will include but not be limited to designated administrators of the following institutions:

- University of Texas at El Paso
- Texas Tech University Health Sciences Center - El Paso
- El Paso Community College
- R. E. Thomason General Hospital
- El Paso City/County Health District
- University of Texas Health Sciences Center at Houston, School of Public Health
- El Paso County Medical Society

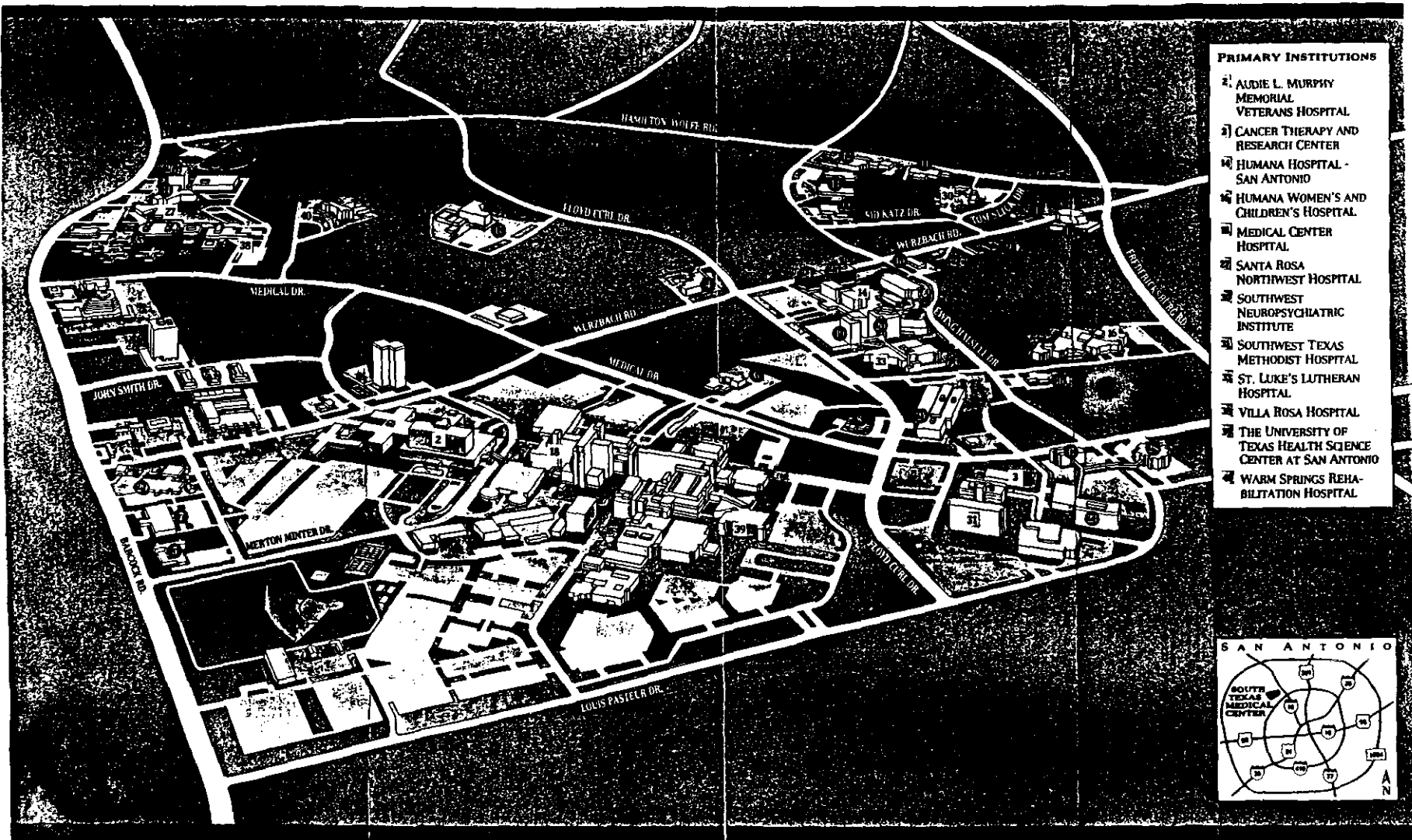
ADVISORY COMMITTEE

In addition the Governing Body will also form an Advisory Committee to include designated representatives:

- Elected Officials
- New Mexico - City of Las Cruces, Dona Ana and Otero Counties Health Agencies
- New Mexico State University
- Paso Del Norte Health Foundation
- Region XIX Educational Service Center
- Pan American Health Organization
- Representatives of area private-not-for-profit and for-profit health care providers
- U.S./Mexico Border Health Commission
- Mexico -
 - Universidad de Ciudad Juarez - Instituto de Ciencias Biomedicas
 - Secretaria de Salubridad y Asistencia Juridiccion Sanitaria II
 - Instituto Mexicano del Seguro Social (SS)
 - Instituto de Seguridad y Servicios Sociales de los Trabajadores del Estado (ISSSTE)
 - Servicios Medicos Municipales, Cd. Juarez
- University of New Mexico Health Sciences Center - Las Cruces
- William Beaumont Army Medical Center
- Such other individuals and agencies, at large, possessing skills and resources useful to RHI as the Governing Board and the Advisory Committee shall deem necessary to the work of the Institute

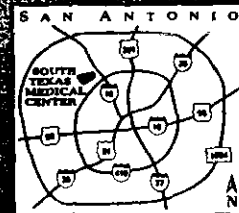
SUPPORTERS: Texas officials and regional health education professionals including Governor George W. Bush, University of Texas Chancellor William Cunningham, and Texas Tech University Chancellor John T. Montford all have recommended that El Paso be the site for a Border Health Institute. The RHI embraces this concept.

CONCLUSION: The RHI will create a state-of-the-art consortium focused on education and research of the highest quality whose impact will be internationally recognized. The value of this collaborative to the participating institutions, the community, and the region will be immeasurable; but equally important is the benefit of greatly expanded health-related resources for the citizens of the Upper Rio Grande Valley of Texas and its neighboring communities.



PRIMARY INSTITUTIONS

- 1 AUDIE L. MURPHY MEMORIAL VETERANS HOSPITAL
- 2) CANCER THERAPY AND RESEARCH CENTER
- 3) HUMANA HOSPITAL - SAN ANTONIO
- 4) HUMANA WOMEN'S AND CHILDREN'S HOSPITAL
- 5) MEDICAL CENTER HOSPITAL
- 6) SANTA ROSA NORTHWEST HOSPITAL
- 7) SOUTHWEST NEUROPSYCHIATRIC INSTITUTE
- 8) SOUTHWEST TEXAS METHODIST HOSPITAL
- 9) ST. LUKE'S LUTHERAN HOSPITAL
- 10) VILLA ROSA HOSPITAL
- 11) THE UNIVERSITY OF TEXAS HEALTH SCIENCE CENTER AT SAN ANTONIO
- 12) WARM SPRINGS REHABILITATION HOSPITAL

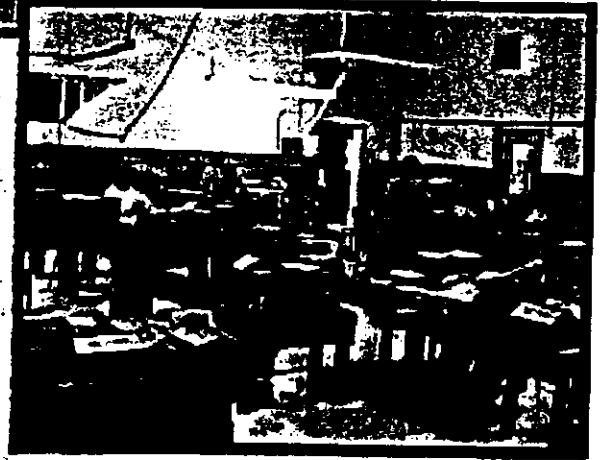
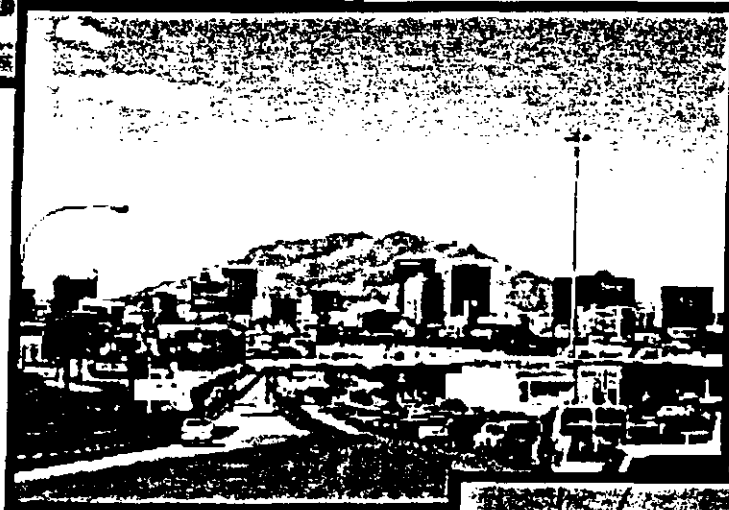


COMPARATIVE REVENUE STATISTICS 1997

	TTUHSC El Paso	UTHSC San Antonio	UTHSC Tyler	TTUHSC System
Revenues	\$66,087,073	\$359,801,974	\$94,783,247	\$343,740,204
■ State Appropriations	11,956,305	114,893,634	24,912,539	79,996,449
■ Federal Grants/Contracts	395,052	76,965,272	1,446,545	4,741,090
■ State Grants/Contracts	2,530,517	45,633,132	1,167,026	71,312,036
■ Local/Private	9,229,519	52,281,707	6,322,132	47,533,288
■ MPIP	36,933,227	30,034,537	8,125,916	73,269,490
■ Plant Funds	139,793	36,843,000	10,302,022	31,206,671
■ Other	4,902,660		42,507,067	35,681,180
Expenditures	\$68,980,621	\$340,421,215	\$90,909,941	\$310,511,918
■ Unrestricted Total	54,863,897	209,464,007	75,479,871	179,359,190
• Education & General	12,210,805	141,524,930	63,441,997	75,669,166
• Designated	42,524,156	62,201,175	11,765,198	103,519,616
• Auxiliary Enterprises	128,936	5,737,902	272,676	350,863
■ Restricted Total	\$11,081,880	\$107,467,490	\$5,286,524	\$105,883,365
■ Endowment/Agency Foundation	20,995	1,176	0	368,000
■ Plant Funds				
• Unexpended	3,013,849	18,329,280	9,323,483	11,402,355
• Debt Retirement				3,333,119
• Plant Investment		4,907,727	789,411	5,185,264
• HEAF El Paso Clinic	2,804,643			
• HEAF Deferred Maintenance	181,891			
• MPIP Unrestricted El Paso Projects	20,315			

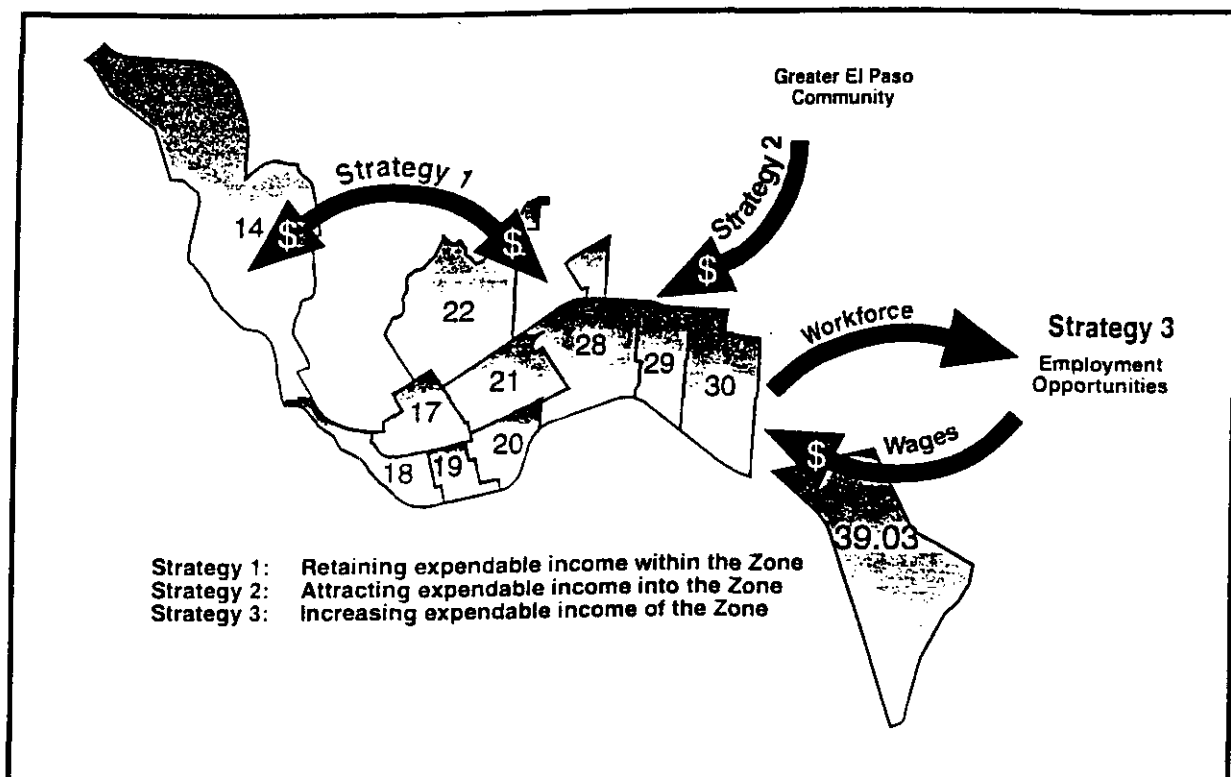


Empower El Paso



Building Bridges
to
Sustainable Neighborhoods

Strategies for Increasing Wealth in the Empowerment Zone



- The third creates opportunities for Zone residents to earn income in good jobs outside the Zone and bring dollars back into the Zone to be spent or invested.

Major Strategies for Achieving Goals

With these points in mind, the Stakeholders identified the following as the major strategies for achieving the stated goals:

Economic Opportunity - Promote the economic development of the Zone by increasing job and business opportunities in the Zone and in the developable sites.

Human Development - Support integrated and innovative health and human services as they are shown to be needed and effective in the Zone.

Sustainable Neighborhoods - Invest in neighborhood infrastructure, especially affordable housing, to keep Zone neighborhoods vital.

Targets for Zone Strategies and Efforts

Building from the foundation of the vision, community assessment, goals and strategies, the stakeholders recognized the benefits of having tangible targets at which the strategies and efforts could be directed. As a result of several recent studies and issue summits conducted for the El Paso region, Zone stakeholders could identify four such tangible targets having strong links to the revitalization of the Zone:

- The expansion of the Zone's existing medical-healthcare cluster into a medical-healthcare district centered around a new multimillion dollar Border Health Institute (BHI).

Goals

- The accelerated development of the *Salsa for the Soul* district, with the downtown arts and entertainment district at its hub, interlacing the diverse historical, cultural and recreational sites throughout the Zone.
- The expansion of distinct international trade districts providing a concentration of (and magnet for) manufacturing, trade businesses and support services.
- The strengthening of particular enduring residential neighborhoods within the Zone through investments in infrastructure and human development.

Work-in-Process

It is important to recognize that these tangible targets are in various stages of development at this time. Therefore, while Zone stakeholders consider BHI, for example, to be a galvanizing force for the revitalization of the Zone, this project is not sufficiently developed at this time to allow for the inclusion of related projects in the first two years of the Empowerment Zone designation. No Empowerment Zone funds are being requested at this time to directly support the development of the BHI. Once political and institutional negotiations reach sufficient resolution, the stakeholders fully intend to support the Border Health Institute as a tangible target for particular Zone projects and programs. In the meantime, Zone stakeholders will use Empowerment Zone funds to address other pressing issues. If such issues are left unaddressed, they could hamper the ability of the Zone to realize the benefits of the BHI in the future.

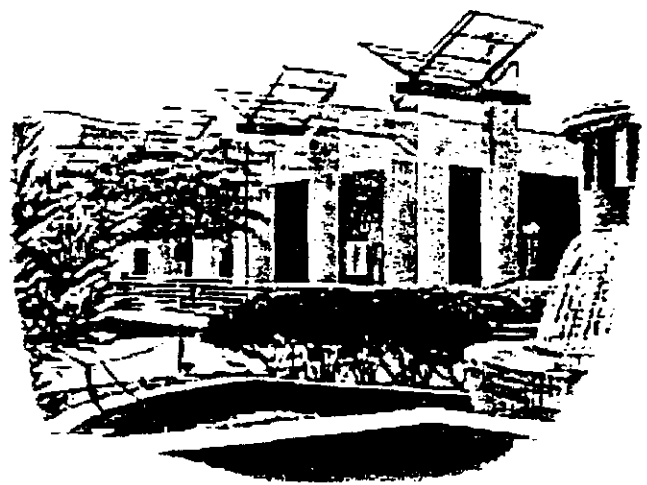
Target: BHI

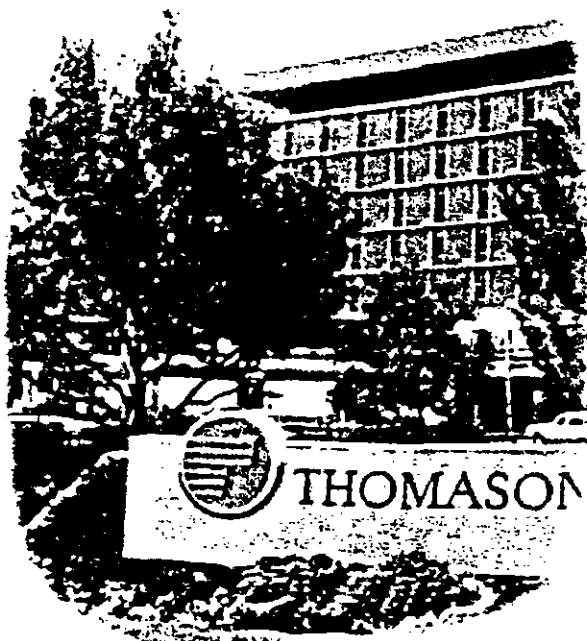
As articulated in *Bordering the Future*, a report issued by the Texas State Comptroller, healthcare is a growing need and an integral part of the border economy. The development of a BHI has been

prioritized in the report and is one of four initiatives highlighted by the El Paso Economic Summit.

A healthy workforce is a basic requirement for a thriving economy. At present, many residents of the proposed Empowerment Zone and the greater El Paso region suffer from chronic illnesses and poverty-related infectious disease. In addition to the human costs in terms of suffering and lost potential, individuals in poor health are unable to work and families are unable to remain self-sufficient. Local taxpayers face ever higher costs for indigent healthcare to support a fragmented health system that is a barrier to economic development. Thus, increasing the availability and quality of healthcare for area residents, strengthening and coordinating our community's existing healthcare resources, and leveraging those resources to create new jobs and generate additional economic activity are essential elements of El Paso's proposal. The proposed BHI, to be located within the Empowerment Zone, is the key to implementing these strategies.

In addition to addressing health-related problems in the Upper Rio Grande region and improving the quality of life for area residents, BHI will strengthen





the regional economy and help increase employment opportunities and wages. By providing research opportunities, educational programs and job training, BHI will enable Zone residents and other community members to upgrade their skills, help them obtain better jobs with higher wages, and gain access to benefits such as health insurance and pensions. Moreover, by serving as an economic engine in the heart of the Empowerment Zone, BHI will help create new jobs across a broad spectrum of skill levels and generate ancillary economic activity and business opportunities.

BHI will build on El Paso's existing health care cluster through collaboration among the University of Texas at El Paso (UTEP), the Texas Tech University Health Sciences Center- El Paso (TTUHSC), El Paso

Community College (EPCC), the El Paso County Hospital District, the Paso del Norte Health Foundation, and local health care providers and businesses. It will serve as a regional command post to plan and coordinate efforts to address regional health care needs and identify and conduct health-related education, academic research and other health initiatives on the border.

BHI would provide numerous economic benefits to the Empowerment Zone and the region as a whole. In addition to conducting population-based research and training physicians, allied health professional and other health care workers, it would coordinate services, improving the quality of care and attracting patients from the El Paso-Ciudad Juárez metroplex, southern New Mexico and northern Mexico. Construction and operation of new and existing facilities will add hundreds of new jobs to the El Paso payroll and inject millions of dollars into the regional economy. BHI will also attract scores of new businesses to the Empowerment Zone, from area health providers and national research concerns to medical equipment and service suppliers.

With the El Paso County Hospital District, Texas Tech University Health Sciences Center and the Silva Magnet School for Healthcare Professions located within one block of each other within the Zone, the Zone is the logical place for the development and expansion of the healthcare industry as a major force in the future economy of the Zone and El Paso.

Projects and programs grounded in economic development and directed toward BHI are still on the drawing board. There are, however, related programs included in the Workforce Development Plan and the Human Development Plan.

The Health Research and Education Initiative for El Paso

Whereas, Texas believes in a vision of freeing our greatest resource—our people—to achieve their highest potential;

Whereas, Texas government has a mission to support and promote individual and community efforts to achieve social and economic prosperity;

Whereas, Texas government is dedicated to the proposition that the best form of government is one that is closest to the people and should respect the right and ability of local communities to resolve issues that affect them;

Whereas, in a process commencing with the El Paso Economic Summit, the people of El Paso created the Paso del Norte Regional Health Institute (PDNRHI), a collaboration of institutions dedicated to creating a future health campus in El Paso;

Now therefore, in order to provide for an efficient partnership to best direct the public's resources and create a positive impact on the lives of Texans in the Paso del Norte region, it is resolved that:

1. Paso del Norte Regional Health Institute (PDNRHI)
 - a. The PDNRHI is recognized as a collaboration of institutions in El Paso dedicated to creating a future health campus in El Paso
 - b. The Paso del Norte Health Foundation agrees to fund and coordinate a feasibility study for the PDNRHI health campus in cooperation with Texas Tech and UTEP with completion as soon as practical within the next year
 - c. Land for the PDNRHI Health Campus
 - Enough additional land to create a campus with long-term expansion potential
 - Land acquired by donation or purchase with the El Paso community's active participation and support
 - PDNRHI will deed parts of the campus land to appropriate institutions which agree to build facilities supporting the health research and education needs of El Paso

2. Creation of El Paso Center for Border Health Research

a. Governance: jointly by Texas Tech and UTEP with research collaboration being encouraged, but with each institution being ultimately responsible for its own research activities

b. Capital Funding: Building for El Paso Center for Border Health Research

- Texas Tech and UTEP to ask Legislature for \$15 million each (total \$30 million) to fund building. Use either tuition revenue bonds or direct appropriation
- If possible, locate building on land donated by the Paso del Norte Health Foundation
- Ownership: Texas Tech and UTEP jointly
- Joint Occupancy by Texas Tech and UTEP

c. Funding for Operations:

(1) Start-up funding to be shared by Paso del Norte Health Foundation, Texas Tech, and UTEP

(2) As a part of this agreement, Texas Tech, UTEP and the U.T. System agree to support a request to the 76th Legislature for separate endowments from the tobacco fund in the amount of:

- \$25 million, which is to be exclusively for the benefit of UTEP in order to help fund on a permanent basis its border health research activities, and which for clarification purposes is not intended to be the same \$25 million Texas Tech is seeking from the tobacco funds for its other health sciences campuses outside of El Paso
- \$50 million, which is to be exclusively for the benefit of Texas Tech in order to help fund on a permanent basis its border health research based in El Paso

- (3) Longer-term Funding: Joint request to the Legislature by U.T. System, Texas Tech and UTEP to support work of the Center and to balance operational funding of the two institutions for the Center after taking into account endowment earnings dedicated to the El Paso Center for Border Health Research.
3. All parties involved in this agreement understand that key elements of the initiative are subject to authorization by the 76th Legislature. The parties commit themselves to respect the actions and will of the Legislature regarding the Center for Border Health Research.
4. Formal announcement of this agreement in El Paso.

December 16, 1998

W. H. [Signature]
[Signature]
Diana Satala
Alond Smith

*rights to assist
in identification
of a BHI
"campus"
site +
agreement
Thomason site,
172 residences
elements of Tech
medical school
Senator asks that
allied Health +
research activity
also be located there
(UTEP + HSC - Houston
venture)*

BHI Statutes from 76th Legislature

HB 2025 on BHI

§§ 151.002. Establishment; Purpose (a) The Border Health Institute is established in the city of El Paso. (b) The institute shall operate in a manner that facilitates and assists the activities of international, national, regional, or local health-related institutions working in the Texas-Mexico border region to:

(3) conduct and facilitate research in fields of study affecting public health in the border region, including research related to diabetes, Hispanic health issues, infectious diseases, emerging infections, environmental health issues, and children's health issues.

(c) The governing board may employ an executive director of the institute and any other officer or employee necessary for the operation of the institute.

(d) The governing board shall meet, at least once a year, to review the progress of the institute and to determine the institute's future actions and operational plans.

Added by Acts 1999, 76th Leg., ch. 883, §§ 1, eff. June 18, 1999.

HB 1945 on Tobacco Funds

63.102. Administration and Use of Funds

(b) Except as provided by Subsections (c), (d), and (f), money in a fund established under this subchapter may not be used for any purpose.

(c) The amount available for distribution from each fund may be appropriated only for research and other programs that are conducted by the institution or components for which the fund is established and that benefit the public health. The comptroller or the governing board shall report to the legislature the amount of funds that are eligible for appropriation. *** An amount appropriated from the funds established for the components of the Texas Tech University Health Sciences Center located in El Paso and for The University of Texas at El Paso may be used for the establishment and operation of an institute of public health in El Paso.

Envision what UTEP, El Paso can achieve

By Diana Natalicio
Guest columnist

UTEP President Diana Natalicio and Athletic Director Bob Stull are celebrating another great year. The Miner football team was undefeated again this year, selling out the Sun Bowl for all home games. Basketball Coach Don Haskins recorded his 1,000th victory and his fourth consecutive NCAA national championship. Times columnist Joe Muench is still complaining about UTEP athletics.

Although these predictions may seem far-fetched (except the one about Muench's complaints) and even though my crystal ball is certainly no clearer than anyone else's, it is always interesting to envision our world at some future time. I am pleased to have been invited to share with you some of my vision of UTEP in the new millennium, and I have chosen to focus on the year 2014, when we will celebrate the university's 100th birth-

day. Let us pretend it's the year 2014, and here is what I believe can be said about UTEP:

In 2014, UTEP enrollment has grown to more than 20,000 students, 85 percent of whom are Hispanic, reflecting the population of El Paso County from which the university continues to draw more than 80 percent of its undergraduate students. A major investment in distance-learning technology has enabled UTEP to extend its educational resources throughout this region.

In 2014, as a result of the partnership of UTEP, El Paso Community College and the El Paso Collaborative for Academic Excellence, students entering UTEP are far better prepared for academic success than they were during the final years of the past century.



Natalicio



Retention and graduation rates at EPCC and at UTEP have risen significantly during the past several years, and three-fourths of this community's high-school graduates now enter post-secondary education. The State of Texas in 2014 has greatly increased its investment in financial aid and scholarships to ensure that all students with talent and motivation are able to afford a university education. Spiraling tuition and fee increases of the 1990s have been stemmed, in recognition of the fact that higher education is a societal good.

UTEP's doctoral programs have grown in both number and size in 2014. Contract and grant funding have soared, and a number of UTEP faculty members have secured patents for their discoveries, and income from these patents is

flowing into the university's research programs and into the development of local businesses.

In 2014, the Immigration History Center is a national attraction, bringing thousands of visitors to El Paso each year to learn more about immigration to the United States from Mexico and other Latin American countries. Capitalizing on UTEP's nationally recognized doctoral program in U.S.-Mexico Borderlands History, the center has achieved international recognition as the "Ellis Island of the Southwest." The Border Health Institute, a cooperative venture of UTEP, Texas Tech Health Science Center, and the Paso del Norte Health Foundation, is located on a beautiful new campus, including a world-class research center, a four-year medical school and other health professions education and clinical facilities.

Research on diabetes, hepatitis, tuberculosis and infectious diseases prevalent in the U.S.-Mexico

border region has been supported by major grant funding and has improved the region's health.

The departure from El Paso of so many highly skilled UTEP graduates, which characterized the final years of the past century, has ceased, and this new pool of talented professionals is contributing to the "El Paso Economic Miracle."

In 2014, UTEP has just concluded a major fund-raising campaign, in conjunction with our 100th birthday. The campaign goal of doubling endowments from \$150 million to \$300 million was reached thanks to El Paso's broadened corporate base and its robust economy.

All of this that we envision for 2014 could happen. What we do today and tomorrow will determine the extent to which we achieve our vision for UTEP and this community in the next century.

The year 2014 is only 15 years from now. Let's get going!

Diana Natalicio is president of the University of Texas at El Paso.



The Senate of
The State of Texas
Austin, Texas 78711

SCANNED

May 7, 1999

Distinguished Members of the Governing Board of the Border Health Institute:

We are very pleased to have been a part of the passage of HB 2025 creating the Border Health Institute in El Paso, Texas. We believe that the Border Health Institute will have far reaching effects on the quality of life for all of our citizens and will create great opportunities in the field of health education and research.

Given that the passage of this bill is now a certainty, and that the governing board members are now identified, we urge you to convene the governing board and set out the process of creating the Border Health Institute.

The Paso del Norte Health Foundation will contact you in the near future to set a date and time certain for the historic first meeting of the governing board. We stand ready to support you in your future endeavors, and look forward to a bright future for our region.

Very truly yours,

Senator Eliot Shapleigh

Senator Robert Duncan

Rep. Paul Moreno

Rep. Joe Pickett

Rep. Pat Haggerty

Rep. Norma Chavez

Rep. Manny Najera

ES/mr

September 2, 1999

Mr. Woody Hunt
Chairman/CEO
Hunt Building Corporation
P.O. Box 12220
El Paso, Texas 79913

Dear Woody:

We congratulate you for the fine work of the last two years. We are excited about the prospects of a full-fledged border health campus in El Paso modeled on that in San Antonio. The long range benefits to this community both in quality of life and in economic development are profound.

We urge you to aggressively pursue the agenda of the Border Health Institute campus so that this community can realize its dream. If any of us can assist you, please let us know.

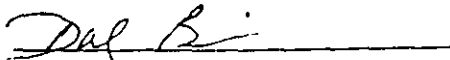
Very truly yours,



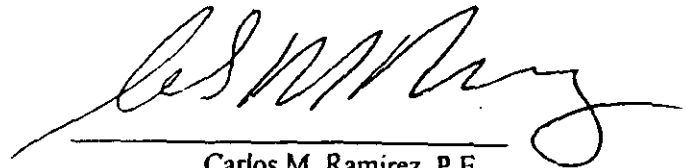
Silvestre Reyes
U.S. Congressman



Eliot Shapleigh
State Senator



Dolores Briones
County Judge



Carlos M. Ramirez, P.E.
Mayor

cc: Governing Board

9
March 3, 2000

Dr. Diana Natalicio
President, U.T. El Paso
Administration Building, Room 500
El Paso, Texas 79968-0500

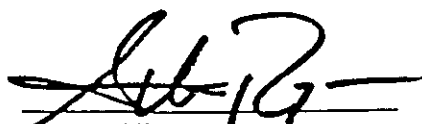
Chancellor John T. Montford
Texas Tech University
Box 42013
Lubbock, Texas 79409-2013

Dear Dr. Natalicio and Chancellor Montford:

On September 2, 1999, we wrote to the BHI Governing Board regarding the importance of moving forward our Border Health Institute – a critical strategic economic and educational goal for our community. Specifically, while HB2025 passed on June 19, 1999, to our knowledge the Governing Board has not met and we know of no tangible actions taken by the board to effect the stated intent of the bill. Further, while riders allocate to both UTEP and Texas Tech \$25 million in endowment monies for the Border Health Research Institute, we are concerned that no memorandum has been executed to create this joint venture. Finally, while Texas Tech has set a goal of a four-year medical school in El Paso, we would appreciate knowing your future plans and timelines for moving this initiative forward. With the next session only ten months away, we feel the need to move forward on the Border Health Institute initiative.

We ask that someone on your staff coordinate with Hector Gutierrez at 512-327-1219 regarding meeting with us within the next 60 days to provide information as to your plans. We look forward to working with you on this exciting initiative. We have asked interested House members to join us for this meeting once the date is set.

Very truly yours,



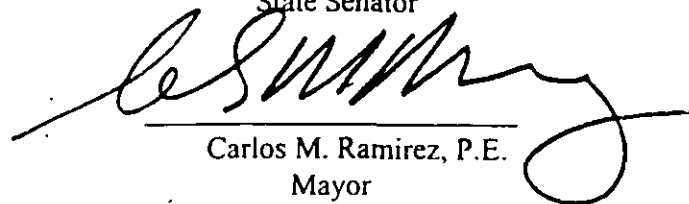
Silvestre Reyes
U.S. Congressman



Eliot Shapleigh
State Senator



Dolores Briones
County Judge



Carlos M. Ramirez, P.E.
Mayor

cc: State Representative Norma Chavez
State Representative Pat Haggerty
State Representative Paul Moreno
State Representative Manny Najera
State Representative Joe Pickett

**EXECUTIVE SUMMARY OF RECOMMENDATIONS FOR
THE PROPOSED EL PASO BORDER HEALTH INSTITUTE
April 2000**

**Recommendations are made by The Lewin Group, Inc., based upon a Feasibility Study
Conducted for The Paso del Norte Health Foundation**

INTRODUCTION

The Lewin Group was retained by the Paso del Norte Health Foundation to conduct a feasibility study that: examines the needs of the El Paso region; identifies design options; and makes recommendations for the functions, structure, governance, and financing of a Border Health Institute (BHI), as authorized in recent Texas legislation. Our work began in late October 1999, and concludes with this *Final Report*.

Three *Resource Papers* were prepared based upon: our extensive interviews with stakeholders within and outside the El Paso region, including Mexico; interviews with informants and literature review related to development of new nonprofit public health and research organizations; and development of case studies of well-established public health-related research and programmatic organizations whose experience can inform this effort. The *Resource Papers* are entitled:

- #1 *A Profile of the El Paso region*, February 2000
- #2 *Research Capacity and Infrastructure: Current and Future Scenarios*, March 2000
- #3 *Building New Institutions: Experience from the Field*, March 2000

These recommendations provide a framework for further development and will, no doubt, be subject to change as the El Paso community receives them and incorporates the results of the Feasibility Study into its next phase of decision making. There will be many details to be worked out, even if the substance of these recommendations is accepted. The Lewin Group was asked to provide guidance through recommendations in many areas. Our recommendations reflect information-based strategic plans, that incorporate independent judgement and projections into a highly uncertain future and rapidly changing environment. We cannot guarantee that, if acted upon, these recommendations will result in the desired outcomes projected.

RECOMMENDATIONS

Critical Assumptions

- The Border Health Institute is intended to benefit the broader community, not just the universities in the region.

-
- Diverse organizations and constituencies in the community intend to cooperate to make the BHI a reality.
 - The El Paso region's communities and people represent a resource that can be "marketed" to attract new resources to the area.
 - The health care system in the El Paso region is limited in its ability to meet the health care needs of large segments of the population (particularly the uninsured), primarily due to resource constraints.
 - It does not make sense to imitate model research institutions that have evolved out of very different circumstances over long periods of time. It is important to design an organization that can thrive in the current and future market oriented, rapidly changing environment.

Goals and Objectives

The recommended goal for the Border Health Institute is:

The Border Health Institute will integrate the information gathering and analytic resources of the region, grow them to scale, and become a state and national resource for knowledge about Hispanic health and health risk, public health, and environmental health needs and interventions relevant to the Mexico/US border region. "Health" shall be viewed as a broad concept that encompasses the general wellbeing of the population, including its support for the potential of individuals to become productive and to participate economically and culturally in the broader community. The Institute's priority shall be to produce knowledge that can be used to further an understanding of which actions are most likely to lead to health benefits for the people in the border region.

Objectives include:

- To enhance the stature of the El Paso community for state and national audiences by:
 - demonstrating its capacity to cooperatively work for the benefit of its population;
 - demonstrating the ability to link with world-class "knowledge builders"; and
 - demonstrating entrepreneurial leadership.
- To build the capacity of the region and its institutions to contribute to knowledge that can be used to solve regional problems and to plan for regional health improvement.
- To generate health and economic benefits for the communities in the region wherever possible through its operations.

rest of the Board (rotating among different members over time for terms specified in by-laws).

- **Board of Directors:** the full voting body with 12 members, including the Executive Committee. This body considers all critical business and makes a mix of recommendations to the Executive Committee and its own decisions as determined in the by-laws. In addition to the Executive Committee, this group includes the highest officer/official of:
 - Paso del Norte Health Foundation
 - Thomason General Hospital
 - The chair of each of the four Working Committees (See Exhibit 1) (organizations named in Texas Legislation that are not named above are included in these groups)
 - Three other individuals selected by the Executive Committee to provide visibility to the BHI and to support its development efforts. These individuals might include distinguished scientists/researchers, a celebrity, and someone well linked to individual or corporate philanthropy.
- **Working Committees** are to be formally constituted, with membership that can be changed with approval by the Board of Directors. Their responsibilities should be specified in the by-laws. These committees are designed to provide a meaningful and productive linkage to major constituencies. Several of the organizations named in the enabling legislation have been moved from the Board to these committees for specific reasons. These committees can be assigned tasks by the full Board or Executive Committee, and should be informed by a formal report of the BHI's financial status, operations, policy changes, performance, and any other matters at least annually. They can make recommendations to the Board and are represented on the Board by an elected Chairperson.

Facilities

In order to serve the cross-cutting, interdisciplinary goals of the BHI, we recommend that the Institute be housed in a new state-of-the-art facility physically distinct from the main El Paso campus of any single participating institution. It should be a place where any organization or individual working on issues affecting the health of the border region is welcomed and supported. At the same time, the facility should be highly visible and accessible to the public to symbolize the BHI's commitment to improve the health of the community.

The BHI facility should become the home for a variety of organizations and institutions that share a mission to improve border health. While the BHI's space requirements are relatively modest, its greatest potential lies in being a hub of activity for multiple organizations and numerous researchers. Thus, we recommend that the BHI be co-located with many other health-related entities. In addition to the BHI, potential tenants in the facility could include: UTEP's Border Biomedical Research Center, clinical and research offices from Texas Tech, UT

CAPITOL OFFICE
E1.608
P.O. BOX 12068
AUSTIN, TEXAS 78711
PHONE: 512/463-0129
FAX: 512/463-0214
TDD: 1-800-735-2989
E-MAIL: eliot.shapleigh@senate.state.tx.us



DISTRICT OFFICE
500 WYOMING AVENUE, SUITE A
EL PASO, TEXAS 79902
PHONE: 915/544-1990
FAX: 915-544-1998
E-MAIL: eliot.shapleigh@senate.state.tx.us

COMMITTEES
STATE AFFAIRS - VICE CHAIR
SPECIAL COMMITTEE ON
BORDER AFFAIRS
VETERAN AFFAIRS
& MILITARY INSTALLATIONS

ELIOT SHAPLEIGH
TEXAS SENATE
DISTRICT 29
EL PASO COUNTY

April 19, 2000

Chancellor John T. Montford
Texas Tech University
P.O. Box 42013
Lubbock, Texas 79409-2013

Dr. Diana Natalicio
Office of the President - UTEP
500 W. University Avenue
El Paso, Texas 79968-0500

Dear Chancellor Montford and Dr. Natalicio:

Enclosed you will find a set of plans for the South Texas Area Health Education Centers. I look forward to your upcoming presentations regarding the Border Health Institute. I am especially interested in the timeline for the physical structures being proposed, and how we can move this "joint venture" campus concept to reality.

Also enclosed is a synopsis of major research now conducted at the U.T. Health Science Center at San Antonio. In addition to the proposed building program, I also look forward to the upcoming discussion regarding proposed research areas for the BHI. In this regard, please provide me with the joint venture agreement between your institutions prior to our briefing.

Thank you and I look forward to your leadership on these critical endeavors.

Very truly yours,

A handwritten signature in black ink, appearing to read "Eliot Shapleigh".

Eliot Shapleigh

ES/kar
Enclosures

SG/TexasTechUniversityHSC/Correspondence/MontfordJBHIBuildings&Research.wpd

1-800-544-1990



The State of Texas
House of Representatives



Joseph C. Pickett

El Paso • District 79

Capitol Office:
P.O. Box 2910
Austin, Texas 78768-2910
512-463-0596
Fax: 512-463-6504

District Office:
1790 Lee Trevino
Suite 307
El Paso, Texas 799
915-590-4349
Fax: 915-590-4722

July 5, 2000

Dear BHI Governing Board Member:

We would like to convene a meeting with all of the entities that make up the governing board of the Border Health Institute as soon as possible. We believe it is imperative that all of us understand and communicate our intentions and roles regarding the institute.

The meeting will be held Friday, August 18, 2000, at the State Office Building at 9a.m. Per the provisions of HB 2025, the governing board of the institute is composed of the chief executive officer or president of each entity that is a member of the institute or that officer's or president's designee.

We look forward to seeing you there!

Sincerely,

Handwritten signature of Joe C. Pickett in black ink.

Joe C. Pickett
State Representative

Handwritten signature of Eliot Shapleigh in black ink.

Eliot Shapleigh
State Senator

cc: El Paso State Delegation

The Honorable Carlos Ramirez, Mayor of El Paso

The Honorable Dolores Briones, County Judge of El Paso

The Honorable Silvestre Reyes, U.S. Congressman

The Honorable Pete Gallego, State Representative

www.joepickett.com

Committees: Appropriations • Vice-Chairman Juvenile Justice and Family Issues



THE UNIVERSITY OF TEXAS AT EL PASO
LEGISLATIVE BRIEFING BOOK

JANUARY 2001

UTEP - Tuition Revenue Bonds Request

FY 2002-2003 Biennium

<u>Summary of Projects in Priority Order</u>	<u>Cost</u>
#1 Relocation of Biomedical and Health Science Corridor – Phase I	\$30,000,000
#2 Renovation and Expansion of Liberal Arts/Academic Services Buildings	\$15,000,000
#3 U.S.-Mexico Border Center Addition to Library Building	\$10,000,000
#4 Upgrade, Replace, or Renovate Classrooms and Building Support Systems – Phase II	\$12,000,000
#5 Engineering Building Renovation	\$ 6,000,000
#6 Technology Disparity Remediation	\$10,000,000
#7 Seamon Hall Renovation	\$ 2,500,000
Total	<u>\$85,500,000</u>

UTEP

Exceptional Items Request

FY 2002-2003

1. Research and Academic Infrastructure Development—Phase I (Tier One Funding)—\$8 million each year

UTEP is well positioned to contribute to Texas' goal of competing more successfully for federal R&D funds. It has already demonstrated that it has the capacity to successfully leverage the state's modest investment in its research activity to secure significant federal support: it ranks fourth among all public universities and health science centers in the state in its federal-to-state funding ratio. A major increase in the state's investment in UTEP's infrastructure will yield a rich return in external funding, and add greatly to the state's capacity to compete with other states for federal R&D dollars.

2. Border Health Research—\$1 million (each year)

UTEP has been successful during the past ten years in building its biomedical and health science research capacity, and has attracted more than \$12 million in federal funding, most of which has come from the National Institutes of Health and the EPA. This research has also served as a foundation for doctoral programs in Environmental Science and Engineering and Pathobiology. We will also be seeking an additional \$25 million in tobacco settlement endowment funds to accelerate the capacity-building process in

biomedical and health science research and education, with specific research priorities in the areas of infectious disease, environmental toxicology, and neuroscience and metabolic disorders, including diabetes.

3. United States-Mexico Immigration History Center--\$500,000 each year

More than 20 million people of Mexican descent live in the United States, yet there is no public institution dedicated to documenting and preserving the experiences of the individuals and families from Mexico who have immigrated to this country. El Paso was the entry point through which much of that immigration occurred—the "Ellis Island of the Southwest"—and UTEP is leading an initiative to create a center that will ensure that generations to come will understand and appreciate the contribution to U.S. society of immigrants from the south.

4. Master's Degree in Public Health—Cooperative Program with UT Houston Health Science Center--\$500,000 each year

The satellite MPH program, operated on the UTEP campus by the UT Houston School of Public Health, has provided opportunities for public health education for residents of this region. Faculty associated



UTEP

Tuition Revenue Bonds Request

FY 2001-2002 Biennium

Summary of Projects in Priority Order

#1 Relocation of Biomedical and Health Sciences Corridor – Phase I **\$30,000,000**

Land acquisition and construction of this core research/teaching facility is proposed to serve as a foundation for the development of a regional biomedical and health science corridor on the UTEP campus. Growing health professions education programs and externally funded biomedical and human health research activity, together with a partnership with Texas Tech Medical School in El Paso, will enable UTEP to provide leadership in addressing the critical health issues of this U.S. – Mexico border region.

#2 Renovation and Expansion of Liberal Arts/Academic Services Buildings **\$15,000,000**

The renovation of the Liberal Arts and Academic Services Buildings and the construction of a multi-story connection between them will bring together: student support programs dedicated to improving the retention and graduation of UTEP's majority Hispanic student population; outreach programs designed to raise the aspirations and achievement level of young people in the surrounding region; and interdisciplinary teacher preparation and research programs.

Although UTEP has been strongly committed to these initiatives—and highly successful in attracting external funding for them—facilities constraints have forced us to wedge them into available space across the campus, resulting in inadequate accommodations and lost opportunities for synergy.

#3 U.S.-Mexico Border Center Addition to Library Building **\$10,000,000**

Construction of a facility is proposed to accommodate a set of interrelated teaching and research programs that have made UTEP a recognized leader in research and outreach related to the border and to links between Texas and Mexico. Built as an extension to the existing University Library, the new structure would directly overlook the international boundary and Ciudad Juarez, Mexico. A primary occupant of the facility would be UTEP's Center for Inter-American and Border Studies, which spearheads and coordinates UTEP research, outreach, and educational efforts related to the border and to Mexico and Latin America. Several other research/teaching centers, including the Immigration History Center, which is rapidly accumulating regional historical archives and oral history collections, would also be accommodated here. The creation of the Center facility would provide access to research materials through on-site collections and electronic links, foster communication

- Expanding rural communities' access to the acclaimed telemedicine network developed by TTUHSC.
 - 5) Education of Rural Health Professionals –
 - Long-term solution is to enlarge the pipeline that supplies health professionals who are ready and able to practice in rural communities.
 - Rural students more likely to practice in rural communities
 - Initiative will target K-16 rural students.
 - enhanced rural health curriculum in all TTUHSC schools.
 - 6) Rural Health Research –
 - Support research in areas such impact of rural demographics, economics, and culture on health status and access to care and will identify efficient and effective strategies for delivering rural health services.
 - Also research in causation of illness and disability in rural communities, particular aging, ranching and farm injuries, and risks associated with agriculture and petrochemicals.
- **Education in Geriatric Nursing**
(FY 2002 - \$750,000; FY 2003 - \$750,000)
 - 1) Well-documented shortage of nurses in Texas, especially in rural areas.
 - 2) Even greater shortage of nurses trained in geriatrics and available to work in long term care.
 - 3) TTUHSC, as part of its aging initiative, is requesting funding for its program in geriatric nursing.
 - 4) TTUHSC's aging program includes new Garrison Center, a state-of-the-art, long-term care facility on the TTUHSC campus.
 - 5) Initiative would add a geriatrics concentration to TTUHSC's existing graduate nurse practitioner degree program.
 - 6) Requested funding would also support scholarships for nursing students.
 - **Four-Year Medical School for El Paso**
(FY 2002 – \$5,125,000; FY 2003 – \$5,125,000)
 - 1) SOM at TTUHSC-El Paso is currently the only medical school campus on the Texas-Mexico border.
 - 2) El Paso is among the state's largest cities without a four-year medical school.
 - 3) As a predominantly Hispanic, border community, it faces health challenges not encountered for generations in most other communities.
 - 4) Converting TTUHSC-El Paso to a four-year medical school would require a substantial increase in basic science and clinical faculty, education and library facilities.
 - 5) Once established, operational funds for the four-year school would be derived primarily from medical service income and state formula driven appropriations.
 - 6) Four-year medical school should be developed in phases.

- 7) First phase, for which funding is being sought during the FY 2002-2003 biennium, would be major enhancement of the research capability of the TTUHSC-El Paso medical school.
- 8) A basic sciences faculty of 25 is being proposed at a cost of approximately \$2 million per year. Start-up costs for equipment would amount to a non-recurring cost of approximately \$250,000 per faculty member.

**Institute for Innovation in Health Management and Finance
(FY 2002 - \$5,400,000; FY 2003 - \$3,700,000)**

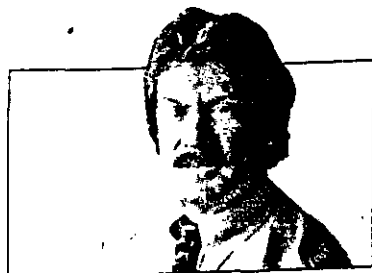
- 1) Substantial need for individuals with specific expertise in healthcare biotech management, healthcare marketing, healthcare information systems, and healthcare finance and for venture capital.
- 2) Proposed Institute is a joint initiative of Texas Tech University's College of Business Administration and School of Medicine.
- 3) Institute would offer post-graduate teaching and education to individuals in these fields of interest leading to both advanced individual and joint degrees.
- 4) Institute would create centers of expertise/databases not available elsewhere in the nation, forming a world class center for education.
- 5) Funding request is for 9 faculty at a cost of approximately \$2.1 million per year would be required for the institute. Additional annual operating cost of \$1.6 million includes support for staff, technology and equipment, and other operating expenses. Start-up costs for faculty and equipment is estimated at \$1.7 million.

Tuition Revenue Bonds - TTUHSC seeks \$50 million in tuition revenue bonding authority for its Amarillo and Lubbock campuses for:

- 1) construction of a clinical research center and ambulatory clinic (Lubbock);
- 2) renovation of an existing academic building and a portion of existing clinic facilities (Amarillo); and
- 3) conversion of a portion of existing academic and clinic space into additional research and support services space (Lubbock).
- 4) TTUHSC will also request an additional \$50 million in tuition revenue bonding authority for land acquisition and initial building and equipping costs associated with the establishment of a four-year medical school in El Paso.

Telemedicine/Telehealth in Rural Areas – TTUHSC proposes that TIF increase the amount of TIF funds allocated to academic health centers providing telemedicine/telehealth services to rural areas and underserved urban areas

- 1) Isolated rural communities that are most in need are least likely to have access to broadband access
- 2) TTUHSC proposes that exemptions or significant reductions to current tariff structure be granted to facilitate broadband access for telemedicine and telehealth services into rural areas



Gary Scharrer

BHI: Round 2

Thousands of El Pasoans have died over the years because of smoking and tobacco-related illnesses, and El Paso taxpayers have spent millions and millions of dollars providing temporary medical treatment during the death journey.

That's a backdrop for the current debate on the **Border Health Institute** and complaints by some that UTEP is spoiling the plan by trying to build a biomedical research center on its own campus. BHI supporters thought they had an agreement that El Paso's medical research and health education would be the principal activities on a single campus.

Former Texas Attorney General **Dan Morales** first proposed El Paso's Border Health Institute when he extracted a \$17.3 billion settlement from the tobacco companies.

Morales wanted the money used for health programs because tobacco has consumed so many lives and tax dollars along the way.

El Paso's share of the initial tobacco settlement allotment was \$50 million, which triggered a fight between El Paso and Lubbock-based Texas Tech officials over who would get the money and control of the BHI.

An agreement resulted in both Tech and the University of Texas at El Paso controlling \$25 million endowments for health research and for a public health institute. Now a fight has erupted in El Paso over UTEP's role in the Border Health Institute.

It was clear two years ago that UTEP would participate in a health education-medical research campus, says **Hector Gutierrez**, who tracked the BHI legislation as a top member of Lt Gov. **Rick Perry's** staff.

"We wanted to be able to create a complex on the border akin to what exists in Houston or San Antonio," Gutierrez says.

Gary Scharrer covers politics and state government for the El Paso Times. His column appears each Sunday. If you have stories or column suggestions, call him at (512) 479-6606 or e-mail him at gscharrer@elpasotimes.com

<http://www.google.com/search?q=cache:www.senate.gov/~mccain/lhhs00ap.htm+El+Paso+border+health+institute&hl=en>

STATEMENT OF SENATOR McCAIN ON S.
1650, THE DEPARTMENTS OF LABOR,
HEALTH AND HUMAN SERVICES, AND
EDUCATION APPROPRIATIONS BILL FOR
THE FISCAL YEAR 2000

September 30, 1999

Mr. President, I want to commend both Senator Specter and Senator Harkin for their dedicated work on this legislation which provides federal funding for the Departments of Labor, Health and Human Services (HHS), and Education. This appropriations bill provides funding for many critical programs directly helping American families and providing important assistance to our most important resource, our children.

One of the most important components in this

Office of the Secretary, US-Mexico Border Health, page 229

The Committee urges the department and the commission to carefully consider locating its permanent offices of the secretariat in El Paso, Texas, in partnership with the consortium of universities and other entities supporting the creation of a border health institute in El Paso.



El Paso Legislative Delegation

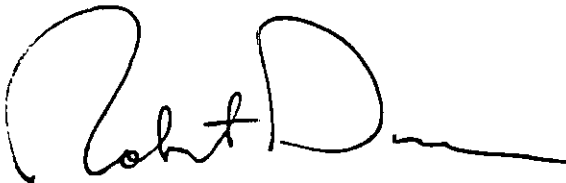

October 3, 2000


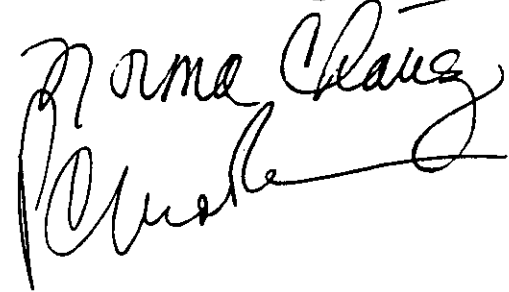
Dear Dr. McGee:

We congratulate you for your leadership and commitment as the first chair of the Border Health Institute Governing Board. We believe the BHI lies at the heart of a bright future for our community and region.

For us to be successful in the next legislative session, we believe that our community must select a site for the BHI no later than December 15. Due to the great interest in this issue, we suggest that you conduct a series of public meetings to take testimony on the "pros" and "cons" of various locations. We would request that you provide us with a report on your recommendations by December 15. Thank you for all that you do for us and the people of our region.

Very truly yours,


Manny Najera



Norma Claus


Issues raised by **UTEP Administration**

- ▶ “Legislature killed BHI”
- ▶ “Way too much money”
- ▶ “Our students need to be on one campus”
- ▶ “Virtual Campus”

SILVESTRE REYES
18TH DISTRICT, TEXAS

COMMITTEE ON ARMED SERVICES

SUBCOMMITTEE ON
MILITARY INSTALLATIONS AND FACILITIES
SUBCOMMITTEE ON
MILITARY RESEARCH AND DEVELOPMENT
SPECIAL OVERSIGHT PANEL ON TERRORISM

COMMITTEE ON VETERANS' AFFAIRS

SUBCOMMITTEE ON BENEFITS

CONGRESSIONAL HISPANIC CAUCUS

1ST VICE CHAIRMAN



Congress of the United States
House of Representatives
Washington, DC 20515

214 Cannon Building
Washington, DC 20515
(202) 225-4431
FAX: (202) 225-2916

DISTRICT OFFICE:
310 N. Mesa, Suite 400
El Paso, TX 79901
(915) 533-4400
FAX: (915) 533-7428

<http://www.house.gov/reyes/>

November 6, 2000

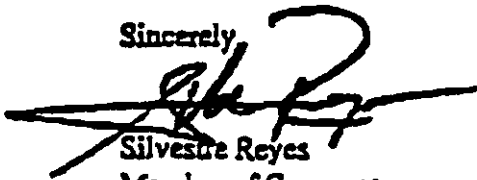
Dr. William McGee, MD.
16 Concord St.
El Paso, TX 79906

Dear Dr. McGee:

The mission of the Border Health Institute (BHI), to study the unique health problems along the U.S. - Mexico border, is an important one. I am deeply concerned that if a location for the BHI is not agreed upon by members of the BHI Governing Board, that the concept for this research center may be abandoned. I know that El Paso is the perfect location to center international research on border health and I do not want our community to remain divided over this issue and miss an opportunity to develop a first class research complex.

In order for me to identify and target Federal funds in support of the BHI, it is imperative that a decision regarding the location be made. I believe that a final determination of where the BHI will be located will facilitate Federal involvement in this important Institute. I respectfully ask that members of the BHI unite behind the common philosophy of the Institute and make this decision as soon as possible.

Sincerely,


Silvestre Reyes
Member of Congress

CSR/ppi