

Section IV

◆◆◆

Student Information

IV. Student Information

1. Student Demographics:	
◆ Total Fall Enrollment: All Institutions	95
◆ Student Enrollment Trend by Ethnic Origin (Anglo vs. All Others)	96
◆ Student Enrollment Trend by Gender	97
◆ Undergraduate and Graduate Fall Enrollment: All Institutions	98
◆ Total Fall Enrollment: Academic Institutions	99
◆ Undergraduate and Graduate Fall Enrollment: Academic Institutions	100
◆ Total Fall Enrollment: Health Institutions	101
◆ Undergraduate and Graduate Fall Enrollment: Health Institutions	102
◆ Total Fall Enrollment:	
▷ Arlington	103
▷ Austin	104
▷ Brownsville	105
▷ Dallas	106
▷ El Paso	107
▷ Pan American	108
▷ Permian Basin	109
▷ San Antonio	110
▷ Tyler	111
◆ Undergraduate and Graduate Fall Enrollment:	
▷ Arlington	112
▷ Austin	113
▷ Brownsville	114
▷ Dallas	115
▷ El Paso	116
▷ Pan American	117
▷ Permian Basin	118
▷ San Antonio	119
▷ Tyler	120
◆ Total Fall Enrollment:	
▷ Southwestern Medical Center at Dallas	121
▷ Medical Branch at Galveston	122
▷ Health Science Center at Houston	123
▷ Health Science Center at San Antonio	124
◆ Undergraduate and Graduate Fall Enrollment:	
▷ M. D. Anderson Cancer Center	125

- ▷ Southwestern Medical Center at Dallas 126
- ▷ Medical Branch at Galveston 127
- ▷ Health Science Center at Houston 128
- ▷ Health Science Center at San Antonio 129
- ▷ M. D. Anderson Cancer Center 130

- 2. Graduation Rates 131

- 3. Assignable Educational and General Space:
 - ◆ Explanation 132
 - ◆ Academic Institutions 133
 - ◆ Arlington 134
 - ◆ Austin 135
 - ◆ Brownsville 136
 - ◆ Dallas 137
 - ◆ El Paso 138
 - ◆ Pan American 139
 - ◆ Permian Basin 140
 - ◆ San Antonio 141
 - ◆ Tyler 142

1) Financial

2) Human Resources

3) Investments

5) Research Expenditures

6) Technology Transfer

Student Demographics Total Fall Enrollment

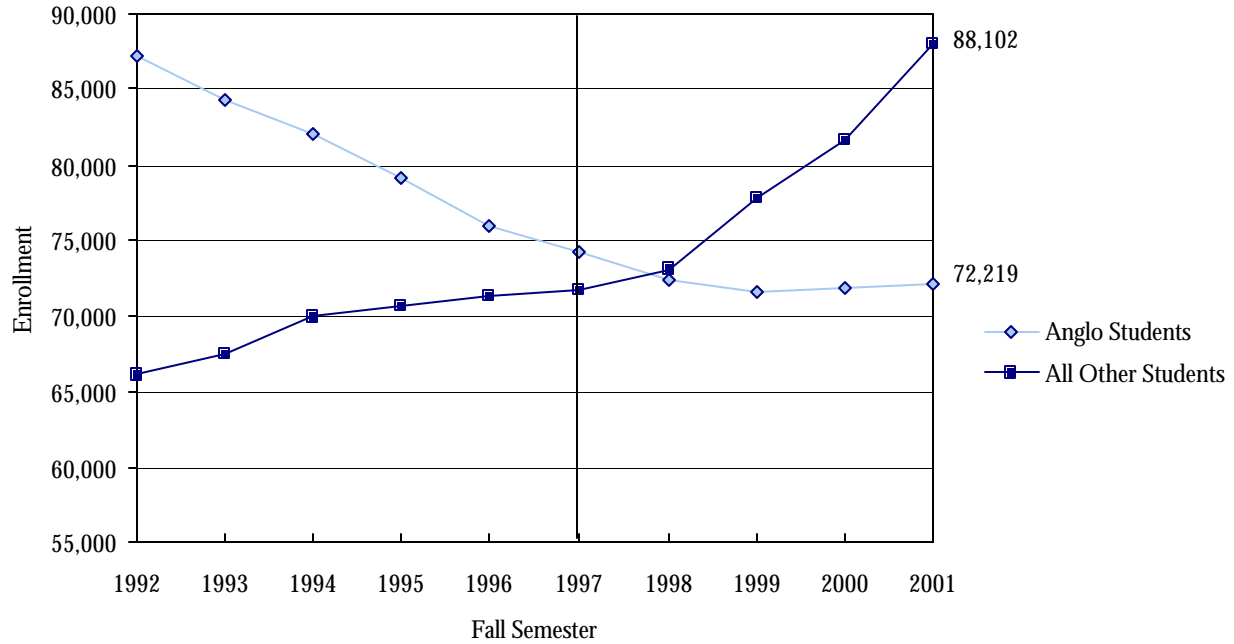
All Institutions

Headcount	1997	%	1998	%	1999	%	2000	%	2001	%
Ethnic Origin										
Anglo	74,156	50.9	72,443	49.8	71,653	48.0	71,848	46.8	72,219	45.0
African-American	6,127	4.2	6,209	4.3	6,555	4.4	7,086	4.6	7,413	4.6
Hispanic	45,421	31.1	45,676	31.4	48,602	32.5	50,060	32.6	53,258	33.2
Asian-American	11,126	7.6	11,488	7.9	11,835	7.9	12,390	8.1	13,340	8.3
Native American	674	0.5	668	0.5	669	0.4	675	0.4	687	0.4
Non-resident Alien	8,331	5.7	8,976	6.2	9,827	6.6	10,986	7.2	12,526	7.8
Unknown / Not Reported	0.0	0.0	103	0.1	270	0.2	445	0.3	878	0.5
Totals	145,845	100.0	145,563	100.0	149,911	100.0	153,490	100.0	160,321	99.8
Sex										
Male	68,868	47.2	68,209	46.9	59,457	46.5	70,874	46.2	74,106	46.2
Female	76,977	52.8	77,354	53.1	79,954	53.5	82,616	53.8	86,215	53.8
Totals	145,845	100.0	145,563	100.0	139,411	100.0	153,490	100.0	160,321	100.0

Notes: Beginning with the fall 1998, "Unknown or Not Reported" has been introduced into the ethnic options for students. Previous years do not include this option. "Undergraduate" includes the classifications freshman, sophomore, junior, senior, and post-baccalaureate (but not in graduate programs). Percentage totals may not sum to 100.0% due to rounding.

Source: Texas Higher Education Coordinating Board (THECB). Fall 2001 data obtained from preliminary CBM-001 reports to the THECB, not certified.

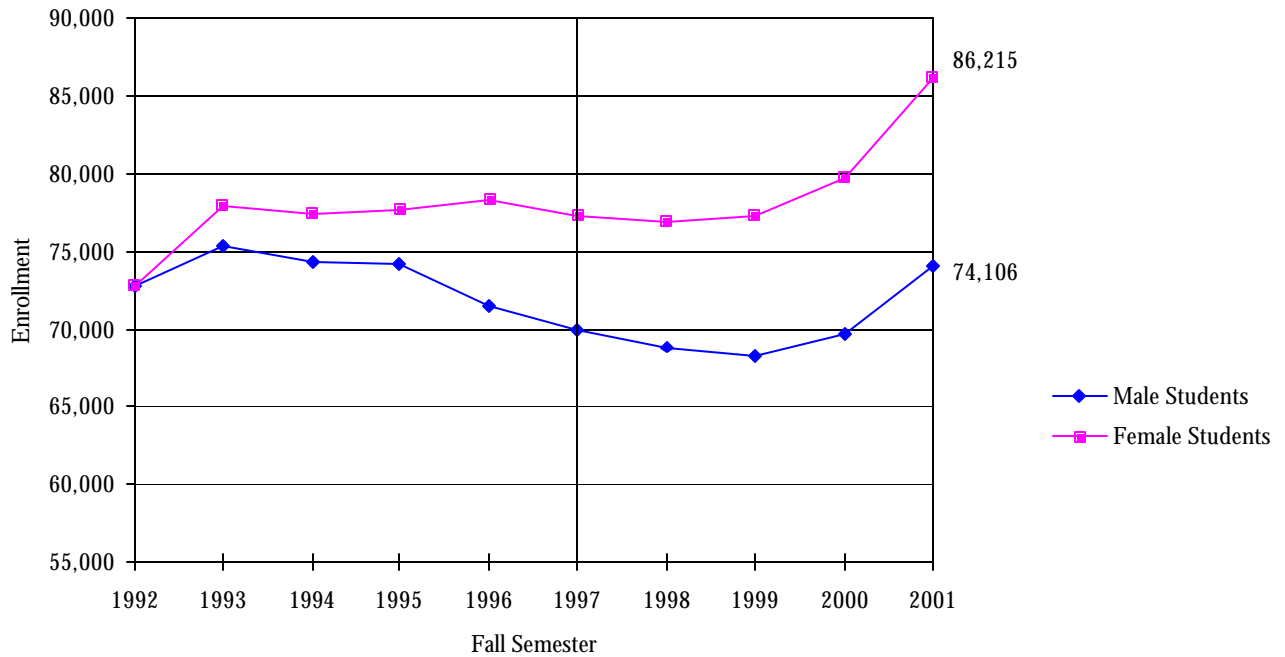
Student Enrollment Trend by Ethnic Origin Anglo vs. All Others



Notes: An educational partnership between U. T. Brownsville and Texas Southmost College was established Fall 1992, which has resulted with the inclusion of Texas Southmost students in the totals.

Source: Texas Higher Education Coordinating Board 2001 preliminary data.

Student Enrollment Trend by Gender Fall 1997-2001



Notes: An educational partnership between U. T. Brownsville and Texas Southmost College was established Fall 1992, which has resulted with the inclusion of Texas Southmost students in the totals.

Source: Texas Higher Education Coordinating Board data 1999 preliminary.

Student Demographics Undergraduate and Graduate Fall Enrollment

All Institutions

Undergraduate

Headcount	1997	%	1998	%	1999	%	2000	%	2001	%
Ethnic Origin										
Anglo	54,320	48.3	53,680	47.7	53,244	45.9	53,035	44.9	53,970	43.5
African-American	4,903	4.4	5,040	4.5	5,415	4.7	5,664	4.8	6,106	4.9
Hispanic	40,439	35.9	40,364	35.8	43,061	37.1	44,019	37.3	47,033	37.9
Asian-American	8,888	7.9	9,277	8.2	9,632	8.3	10,073	8.5	10,992	8.9
Native American	512	0.5	512	0.5	513	0.4	518	0.4	539	0.4
Non-Resident Alien	3,475	3.1	3,701	3.3	4,010	3.5	4,529	3.8	4,912	4.0
Unknown or Not Reported	0	0.0	25	0.0	73	0.1	201	0.2	570	0.5
Totals	112,537	100.0	112,599	100.0	115,948	100.0	118,039	99.9	124,122	100.0
Sex										
Male	52,123	46.3	51,995	46.2	53,413	46.1	53,856	45.6	56,490	45.5
Female	60,414	53.7	60,604	53.8	62,535	53.9	64,183	54.4	67,632	54.5
Totals	112,537	100.0	112,599	100.0	115,948	100.0	118,039	100.0	124,122	100.0

Graduate

Headcount	1997	%	1998	%	1999	%	2000	%	2001	%
Ethnic Origin										
Anglo	19,846	59.6	18,763	56.9	18,409	55.0	18,813	53.1	18,249	50.4
African-American	1,224	3.7	1,169	3.5	1,140	3.4	1,422	4.0	1,307	3.6
Hispanic	4,982	15.0	5,312	16.1	5,541	16.6	6,041	17.0	6,225	17.2
Asian	2,238	6.7	2,211	6.7	2,203	6.6	2,317	6.5	2,348	6.5
American Indian	162	0.5	156	0.5	156	0.5	157	0.4	148	0.4
Non-Resident Alien	4,856	14.6	5,275	16.0	5,817	17.4	6,457	18.2	7,614	21.0
Unknown or Not Reported	0	0.0	78	0.2	197	0.6	244	0.7	308	0.9
Totals	33,308	100.1	32,964	99.9	33,463	100.1	35,451	99.9	36,199	100.0
Sex										
Male	52,123	46.3	51,995	46.2	53,413	46.1	53,856	45.6	56,490	45.5
Female	60,414	53.7	60,604	53.8	62,535	53.9	64,183	54.4	67,632	54.5
Totals	33,308	100.1	32,964	99.9	33,463	100.1	35,451	99.9	36,199	100.0

Notes: Beginning with Fall 1998, "Unknown or Not Reported" has been introduced into the ethnic options for students. Previous years do not include this option. "Undergraduate" includes the classifications freshman, sophomore, junior, senior, and post-baccalaureate (but not in graduate programs). Percentage totals may not sum to 100.0% due to rounding.

Source: Texas Higher Education Coordinating Board (THECB).

Fall 2001 data obtained from preliminary CBM-001 reports to the THECB, not certified.

Student Demographics Total Fall Enrollment Academic Institutions

Headcount	1997	%	1998	%	1999	%	2000	%	2001	%
Ethnic Origin										
Anglo	68,239	50.1	66,728	49.0	65,997	47.1	66,365	46.0	66,648	44.2
African-American	5,602	4.1	5,713	4.2	6,059	4.3	6,571	4.6	6,857	4.5
Hispanic	44,203	32.4	44,394	32.6	47,344	33.8	48,764	33.8	51,807	34.3
Asian-American	9,884	7.2	10,263	7.5	10,644	7.6	11,228	7.8	12,195	8.1
Native American	617	0.5	605	0.4	625	0.4	629	0.4	640	0.4
Non-Resident Alien	7,793	5.7	8,365	6.1	9,240	6.6	10,318	7.1	11,839	7.8
Unknown/Not Reported	0	0.0	103	0.1	270	0.2	445	0.3	854	0.6
Totals	136,338	100.0	136,171	99.9	140,179	100.0	144,320	100.0	150,840	99.9
Sex										
Male	64,674	47.4	64,180	47.1	65,530	46.7	67,021	46.4	70,171	46.5
Female	71,664	52.6	71,991	52.9	74,649	53.3	77,299	53.6	80,669	53.5
Totals	136,338	100.0	136,171	100.0	140,179	100.0	144,320	100.0	150,840	100.0

Notes: Beginning with Fall 1998, "Unknown or Not Reported" has been introduced into the ethnic options for students. Previous years do not include this option. "Undergraduate" includes the classifications freshman, sophomore, junior, senior, and post-baccalaureate (but not in graduate programs). Percentage totals may not sum to 100.0% due to rounding.

Source: Texas Higher Education Coordinating Board (THECB).
Fall 2001 data obtained from preliminary CBM-001 reports to the THECB, not certified.

Student Demographics Undergraduate and Graduate Fall Enrollment

Academic Institutions

Undergraduate

Headcount	1997	%	1998	%	1999	%	2000	%	2001	%
Ethnic Origin										
Anglo	52,834	47.9	52,347	47.4	52,126	45.7	51,924	44.7	52,839	43.3
African-American	4,721	4.3	4,867	4.4	5,240	4.6	5,466	4.7	5,905	4.8
Hispanic	40,064	36.3	39,962	36.2	42,657	37.4	43,581	37.5	46,565	38.1
Asian-American	8,681	7.9	9,083	8.2	9,463	8.3	9,932	8.6	10,855	8.9
Native American	501	0.5	500	0.5	506	0.4	511	0.4	528	0.4
Non-Resident Alien	3,453	3.1	3,655	3.3	3,980	3.5	4,464	3.8	4,850	4.0
Unknown or Not Reported	0	0.0	25	0.0	73	0.1	201	0.2	570	0.5
Totals	110,254	100.0	110,439	100.0	114,045	100.0	116,079	99.9	122,112	100.0
Sex										
Male	51,571	46.8	51,489	46.6	52,780	46.3	53,436	46.0	56,031	45.9
Female	58,683	53.2	58,950	53.4	61,265	53.7	62,643	54.0	66,081	54.1
Totals	110,254	100.0	110,439	100.0	114,045	100.0	116,079	100.0	122,112	100.0

Graduate

Headcount	1997	%	1998	%	1999	%	2000	%	2001	%
Ethnic Origin										
Anglo	15,405	59.1	14,381	55.9	13,871	53.1	14,441	51.1	13,809	48.1
African-American	881	3.4	846	3.3	819	3.1	1,105	3.9	952	3.3
Hispanic	4,139	15.9	4,432	17.2	4,687	17.9	5,183	18.4	5,242	18.2
Asian-American	1,203	4.6	1,180	4.6	1,181	4.5	1,296	4.6	1,340	4.7
Native American	116	0.4	105	0.4	119	0.5	118	0.4	112	0.4
Non-Resident Alien	4,340	16.6	4,710	18.3	5,260	20.1	5,854	20.7	6,989	24.3
Unknown or Not Reported	0	0.0	78	0.3	197	0.8	244	0.9	284	1.0
Totals	26,084	100.0	25,732	100.0	26,134	100.0	28,241	100.0	28,728	100.0
Sex										
Male	13,103	50.2	12,691	49.3	12,750	48.8	13,585	48.1	14,140	49.2
Female	12,981	49.8	13,041	50.7	13,384	51.2	14,656	51.9	14,588	50.8
Totals	26,084	100.0	25,732	100.0	26,134	100.0	28,241	100.0	28,728	100.0

Notes: Beginning with Fall 1998, "Unknown or Not Reported" has been introduced into the ethnic options for students. Previous years do not include this option. "Undergraduate" includes the classifications freshman, sophomore, junior, senior, and post-baccalaureate (but not in graduate programs). Percentage totals may not sum to 100.0% due to rounding.

Source: Texas Higher Education Coordinating Board (THECB).

Fall 2001 data obtained from preliminary CBM-001 reports to the THECB, not certified.

Student Demographics Total Fall Enrollment

Health Institutions

Enrollment

Headcount	1997	%	1998	%	1999	%	2000	%	2001	%
Ethnic Origin										
Anglo	5,927	62.3	5,715	60.8	5,656	61.3	5,483	59.8	5,571	58.8
African-American	525	5.5	496	5.3	496	5.4	515	5.6	556	5.9
Hispanic	1,218	12.8	1,282	13.6	1,258	13.6	1,296	14.1	1,451	15.3
Asian-American	1,242	13.1	1,225	13.0	1,191	12.9	1,162	12.7	1,144	12.1
Native American	57	0.6	63	0.7	44	0.5	46	0.5	47	0.5
Non-Resident Alien	538	5.7	611	6.5	587	6.4	668	7.3	687	7.2
Unknown or Not Reported	0	0.0	0	0.0	0	0.0	0	0.0	24	0.3
Totals	9,507	100.0	9,392	99.9	9,232	100.1	9,170	100.0	9,480	99.8
Sex										
Male	4,194	44.1	4,029	42.9	3,927	42.5	3,853	42.0	3,934	41.5
Female	5,313	55.9	5,363	57.1	5,305	57.5	5,317	58.0	5,546	58.5
Totals	9,507	100.0	9,392	100.0	9,232	100.0	9,170	100.0	9,480	100.0

Note: Percentage totals may not sum to 100.0% due to rounding.

Student Demographics Undergraduate and Graduate Fall Enrollment

Health Institutions

Undergraduate

Headcount	1997	%	1998	%	1999	%	2000	%	2001	%
Ethnic Origin										
Anglo	1,486	65.1	1,333	61.7	1,118	58.7	1,111	56.7	1,131	56.3
African-American	182	8.0	173	8.0	175	9.2	198	10.1	201	10.0
Hispanic	375	16.4	402	18.6	404	21.2	438	22.3	468	23.3
Asian-American	207	9.1	194	9.0	169	8.9	141	7.2	137	6.8
Native American	11	0.5	12	0.6	7	0.4	7	0.4	11	0.5
Non-Resident Alien	22	1.0	46	2.1	30	1.6	65	3.3	62	3.1
Unknown or Not Reported	0	0.0	0	0.0	0	0.0	0	0.0	0	0.0
Totals	2,283	100.1	2,160	100.0	1,903	100.0	1,960	100.0	2,010	100.0
Sex										
Male	552	24.2	506	23.4	408	21.4	420	21.4	459	22.8
Female	1,731	75.8	1,654	76.6	1,495	78.6	1,540	78.6	1,551	77.2
Totals	2,283	100.0	2,160	100.0	1,903	100.0	1,960	100.0	2,010	100.0

Graduate

Headcount	1997	%	1998	%	1999	%	2000	%	2001	%
Ethnic Origin										
Anglo	4,441	61.5	4,382	60.6	4,538	61.9	4,372	60.6	4,440	59.4
African-American	343	4.7	323	4.5	321	4.4	317	4.4	355	4.8
Hispanic	843	11.7	880	12.2	854	11.7	858	11.9	983	13.2
Asian-American	1,035	14.3	1,031	14.3	1,022	13.9	1,021	14.2	1,008	13.5
Native American	46	0.6	51	0.7	37	0.5	39	0.5	36	0.5
Non-Resident Alien	516	7.1	565	7.8	557	7.6	603	8.4	625	8.4
Unknown or Not Reported	0	0.0	0	0.0	0	0.0	0	0.0	24	0.3
Totals	7,224	99.9	7,232	100.1	7,329	100.0	7,210	100.0	7,471	99.8
Sex										
Male	3,642	50.4	3,523	48.7	3,519	48.0	3,433	47.6	3,476	46.5
Female	3,582	49.6	3,709	51.3	3,810	52.0	3,777	52.4	3,995	53.5
Totals	7,224	100.0	7,232	100.0	7,329	100.0	7,210	100.0	7,471	100.0

Notes: "Undergraduate" includes the classifications freshman, sophomore, junior, senior, and post-baccalaureate (but not in graduate programs). Percentage totals may not sum to 100.0% due to rounding.

Source: UT System Office of Health Affairs.

Student Demographics
Total Fall Enrollment

Arlington

Enrollment

Headcount	1997	%	1998	%	1999	%	2000	%	2001	%
Ethnic Origin										
Anglo	12,421	64.4	11,680	62.6	11,541	60.3	11,829	57.9	11,651	55.0
African-American	1,738	9.0	1,901	10.2	2,166	11.3	2,469	12.1	2,485	11.7
Hispanic	1,654	8.6	1,669	8.9	1,873	9.8	2,212	10.8	2,246	10.6
Asian-American	2,084	10.8	1,983	10.6	1,962	10.2	1,909	9.3	2,049	9.7
Native American	138	0.7	122	0.7	144	0.8	140	0.7	152	0.7
Non-Resident Alien	1,251	6.5	1,307	7.0	1,463	7.6	1,865	9.1	2,313	10.9
Unknown or Not Reported	0	0.0	0	0.0	0	0.0	0	0.0	284	1.3
Totals	19,286	100.0	18,662	100.0	19,149	100.0	20,424	99.9	21,180	98.6
Sex										
Male	9,526	49.4	8,993	48.2	9,145	47.8	9,447	46.3	10,049	47.4
Female	9,760	50.6	9,669	51.8	10,004	52.2	10,977	53.7	11,131	52.6
Totals	19,286	100.0	18,662	100.0	19,149	100.0	20,424	100.0	21,180	100.0

Notes: Beginning with Fall 1998, "Unknown or Not Reported" has been introduced into the ethnic options for students. Previous years do not include this option. "Undergraduate" includes the classifications freshman, sophomore, junior, senior, and post-baccalaureate (but not in graduate programs). Percentage totals may not sum to 100.0% due to rounding.

Source: Texas Higher Education Coordinating Board (THECB).
Fall 2001 data obtained from preliminary CBM-001 reports to the THECB, not certified.

Student Demographics
Total Fall Enrollment

Austin

Enrollment

Headcount	1997	%	1998	%	1999	%	2000	%	2001	%
Ethnic Origin										
Anglo	32,069	65.6	31,572	64.6	31,147	63.6	31,368	62.7	31,048	61.3
African-American	1,720	3.5	1,616	3.3	1,551	3.2	1,582	3.2	1,606	3.2
Hispanic	6,148	12.6	5,964	12.2	5,912	12.1	5,920	11.8	6,092	12.0
Asian-American	5,300	10.8	5,619	11.5	5,947	12.1	6,236	12.5	6,703	13.2
Native American	230	0.5	239	0.5	222	0.5	229	0.5	203	0.4
Non-Resident Alien	3,390	6.9	3,793	7.8	3,960	8.1	4,286	8.6	4,481	8.9
Unknown or Not Reported	0	0.0	103	0.2	270	0.6	375	0.8	483	1.0
Totals	48,857	99.9	48,906	100.1	49,009	100.2	49,996	100.1	50,616	100.0
Sex										
Male	24,905	51.0	24,782	50.7	24,678	50.4	25,180	50.4	25,450	50.3
Female	23,952	49.0	24,124	49.3	24,331	49.6	24,816	49.6	25,166	49.7
Totals	48,857	100.0	48,906	100.0	49,009	100.0	49,996	100.0	50,616	100.0

Notes: Beginning with Fall 1998, "Unknown or Not Reported" has been introduced into the ethnic options for students. Previous years do not include this option. "Undergraduate" includes the classifications freshman, sophomore, junior, senior, and post-baccalaureate (but not in graduate programs). Percentage totals may not sum to 100.0% due to rounding.

Source: Texas Higher Education Coordinating Board (THECB).
Fall 2001 data obtained from preliminary CBM-001 reports to the THECB, not certified.

Student Demographics Total Fall Enrollment

Brownsville

Enrollment

Headcount	1997	%	1998	%	1999	%	2000	%	2001	%
Ethnic Origin										
Anglo	589	7.2	542	6.7	651	6.2	606	5.9	651	6.1
African-American	12	0.1	17	0.2	18	0.2	29	0.3	30	0.3
Hispanic	7,439	90.9	7,382	91.6	9,519	91.2	9,363	91.2	9,860	92.1
Asian-American	24	0.3	15	0.2	27	0.3	31	0.3	27	0.3
Native American	9	0.1	4	0.0	19	0.2	8	0.1	8	0.1
Non-Resident Alien	115	1.4	96	1.2	199	1.9	175	1.7	112	1.0
Unknown or Not Reported	0	0.0	0	0.0	0	0.0	59	0.6	16	0.1
Totals	8,188	100.0	8,056	99.9	10,433	100.0	10,271	100.1	10,704	100.0
Sex										
Male	3,114	38.0	3,158	39.2	4,100	39.3	3,968	38.6	4,134	38.6
Female	5,074	62.0	4,898	60.8	6,333	60.7	6,303	61.4	6,570	61.4
Totals	8,188	100.0	8,056	100.0	10,433	100.0	10,271	100.0	10,704	100.0

Notes: Beginning with Fall 1998, "Unknown or Not Reported" has been introduced into the ethnic options for students. Previous years do not include this option. "Undergraduate" includes the classifications freshman, sophomore, junior, senior, and post-baccalaureate (but not in graduate programs). Percentage totals may not sum to 100.0% due to rounding.

Source: Texas Higher Education Coordinating Board (THECB).

Fall 2001 data obtained from preliminary CBM-001 reports to the THECB, not certified.

Student Demographics Total Fall Enrollment

Dallas

Enrollment

Headcount	1997	%	1998	%	1999	%	2000	%	2001	%
Ethnic Origin										
Anglo	5,895	63.3	5,765	60.6	5,903	58.4	6,005	54.8	6,449	51.8
African-American	513	5.5	518	5.4	615	6.1	697	6.4	830	6.7
Hispanic	520	5.6	586	6.2	597	5.9	701	6.4	829	6.7
Asian-American	1,417	15.2	1,610	16.9	1,652	16.4	2,014	18.4	2,241	18.0
Native American	49	0.5	54	0.6	41	0.4	53	0.5	56	0.4
Non-Resident Alien	922	9.9	985	10.3	1,293	12.8	1,470	13.4	1,996	16.0
Unknown or Not Reported	0	0.0	0	0.0	0	0.0	10	0.1	54	0.4
Totals	9,316	100.0	9,518	100.0	10,101	100.0	10,950	100.0	12,455	100.0
Sex										
Male	4,858	52.1	4,975	52.3	5,324	52.7	5,839	53.3	6,653	53.4
Female	4,458	47.9	4,543	47.7	4,777	47.3	5,111	46.7	5,802	46.6
Totals	9,316	100.0	9,518	100.0	10,101	100.0	10,950	100.0	12,455	100.0

Notes: Beginning with Fall 1998, "Unknown or Not Reported" has been introduced into the ethnic options for students. Previous years do not include this option. "Undergraduate" includes the classifications freshman, sophomore, junior, senior, and post-baccalaureate (but not in graduate programs). Percentage totals may not sum to 100.0% due to rounding.

Source: Texas Higher Education Coordinating Board (THECB).

Fall 2001 data obtained from preliminary CBM-001 reports to the THECB, not certified.

Student Demographics
Total Fall Enrollment

El Paso

Enrollment

Headcount	1997	%	1998	%	1999	%	2000	%	2001	%
Ethnic Origin										
Anglo	2,863	18.9	2,584	17.6	2,439	16.6	2,256	14.8	2,273	14.0
African-American	412	2.7	366	2.5	343	2.3	370	2.4	391	2.4
Hispanic	10,038	66.1	9,888	67.4	10,027	68.2	10,588	69.5	11,239	69.3
Asian-American	236	1.6	212	1.4	219	1.5	207	1.4	214	1.3
Native American	48	0.3	48	0.3	48	0.3	40	0.3	49	0.3
Non-Resident Alien	1,579	10.4	1,579	10.8	1,619	11.0	1,763	11.6	2,054	12.7
Unknown or Not Reported	0	0.0	0	0.0	0	0.0	0	0.0	0	0.0
Totals	15,176	100.0	14,677	100.0	14,695	99.9	15,224	100.0	16,220	100.0
Sex										
Male	7,017	46.2	6,804	46.4	6,785	46.2	6,929	45.5	7,330	45.2
Female	8,159	53.8	7,873	53.6	7,910	53.8	8,295	54.5	8,890	54.8
Totals	15,176	100.0	14,677	100.0	14,695	100.0	15,224	100.0	16,220	100.0

Notes: Beginning with Fall 1998, "Unknown or Not Reported" has been introduced into the ethnic options for students. Previous years do not include this option. "Undergraduate" includes the classifications freshman, sophomore, junior, senior, and post-baccalaureate (but not in graduate programs). Percentage totals may not sum to 100.0% due to rounding.

Source: Texas Higher Education Coordinating Board (THECB).
Fall 2001 data obtained from preliminary CBM-001 reports to the THECB, not certified.

Student Demographics Total Fall Enrollment

Pan American

Enrollment

Headcount	1997	%	1998	%	1999	%	2000	%	2001	%
Ethnic Origin										
Anglo	1,377	11.0	1,502	12.1	1,602	12.7	1,570	12.3	1,506	11.0
African-American	76	0.6	65	0.5	62	0.5	63	0.5	63	0.5
Hispanic	10,735	85.9	10,449	84.5	10,502	83.5	10,688	83.8	11,588	84.9
Asian-American	93	0.7	106	0.9	126	1.0	133	1.0	156	1.1
Native American	12	0.1	12	0.1	15	0.1	15	0.1	24	0.2
Non-Resident Alien	208	1.7	239	1.9	263	2.1	291	2.3	304	2.2
Unknown or Not Reported	0	0.0	0	0.0	0	0.0	0	0.0	0	0.0
Totals	12,501	100.0	12,373	100.0	12,570	99.9	12,760	100.0	13,641	99.9
Sex										
Male	5,392	43.1	5,283	42.7	5,263	41.9	5,282	41.4	5,563	40.8
Female	7,109	56.9	7,090	57.3	7,307	58.1	7,478	58.6	8,078	59.2
Totals	12,501	100.0	12,373	100.0	12,570	100.0	12,760	100.0	13,641	100.0

Notes: Beginning with Fall 1998, "Unknown or Not Reported" has been introduced into the ethnic options for students. Previous years do not include this option. "Undergraduate" includes the classifications freshman, sophomore, junior, senior, and post-baccalaureate (but not in graduate programs). Percentage totals may not sum to 100.0% due to rounding.

Source: Texas Higher Education Coordinating Board (THECB).

Fall 2001 data obtained from preliminary CBM-001 reports to the THECB, not certified.

Student Demographics Total Fall Enrollment

Permian Basin

Enrollment

Headcount	1997	%	1998	%	1999	%	2000	%	2001	%
Ethnic Origin										
Anglo	1,519	71.3	1,522	68.7	1,514	68.1	1,475	64.9	1,519	63.1
African-American	78	3.7	93	4.2	76	3.4	81	3.6	81	3.4
Hispanic	491	23.1	559	25.2	593	26.7	676	29.7	756	31.4
Asian-American	23	1.1	19	0.9	20	0.9	19	0.8	25	1.0
Native American	12	0.6	14	0.6	14	0.6	14	0.6	11	0.5
Non-Resident Alien	7	0.3	7	0.3	7	0.3	7	0.3	6	0.2
Unknown or Not Reported	0	0.0	0	0.0	0	0.0	1	0.0	11	0.5
Totals	2,130	100.1	2,214	99.9	2,224	100.0	2,273	99.9	2,409	100.1
Sex										
Male	746	35.0	758	34.2	786	35.3	824	36.3	825	34.2
Female	1,384	65.0	1,456	65.8	1,438	64.7	1,449	63.7	1,584	65.8
Totals	2,130	100.0	2,214	100.0	2,224	100.0	2,273	100.0	2,409	100.0

Notes: Beginning with Fall 1998, "Unknown or Not Reported" has been introduced into the ethnic options for students. Previous years do not include this option. "Undergraduate" includes the classifications freshman, sophomore, junior, senior, and post-baccalaureate (but not in graduate programs). Percentage totals may not sum to 100.0% due to rounding.

Source: Texas Higher Education Coordinating Board (THECB).

Fall 2001 data obtained from preliminary CBM-001 reports to the THECB, not certified.

Student Demographics Total Fall Enrollment

San Antonio

Enrollment

Headcount	1997	%	1998	%	1999	%	2000	%	2001	%
Ethnic Origin										
Anglo	8,595	49.1	8,699	47.3	8,334	44.8	8,225	43.7	8,430	42.4
African-American	769	4.4	838	4.6	913	4.9	948	5.0	1,033	5.2
Hispanic	7,092	40.5	7,797	42.4	8,223	44.2	8,498	45.1	9,059	45.6
Asian-American	657	3.8	656	3.6	653	3.5	638	3.4	735	3.7
Native American	86	0.5	72	0.4	81	0.4	95	0.5	97	0.5
Non-Resident Alien	295	1.7	329	1.8	404	2.2	426	2.3	529	2.7
Unknown or Not Reported	0	0.0	0	0.0	0	0.0	0	0.0	0	0.0
Totals	17,494	100.0	18,391	100.1	18,608	100.0	18,830	100.0	19,883	100.1
Sex										
Male	7,993	45.7	8,308	45.2	8,317	44.7	8,326	44.2	8,886	44.7
Female	9,501	54.3	10,083	54.8	10,291	55.3	10,504	55.8	10,997	55.3
Totals	17,494	100.0	18,391	100.0	18,608	100.0	18,830	100.0	19,883	100.0

Notes: Beginning with Fall 1998, "Unknown or Not Reported" has been introduced into the ethnic options for students. Previous years do not include this option. "Undergraduate" includes the classifications freshman, sophomore, junior, senior, and post-baccalaureate (but not in graduate programs). Percentage totals may not sum to 100.0% due to rounding.

Source: Texas Higher Education Coordinating Board (THECB).

Fall 2001 data obtained from preliminary CBM-001 reports to the THECB, not certified.

Student Demographics Total Fall Enrollment

Tyler

Enrollment

Headcount	1997	%	1998	%	1999	%	2000	%	2001	%
Ethnic Origin										
Anglo	2,911	85.9	2,862	84.8	2,866	84.5	3,031	84.4	3,121	83.6
African-American	284	8.4	299	8.9	315	9.3	332	9.2	338	9.1
Hispanic	86	2.5	100	3.0	98	2.9	118	3.3	138	3.7
Asian-American	50	1.5	43	1.3	38	1.1	41	1.1	45	1.2
Native American	33	1.0	40	1.2	41	1.2	35	1.0	40	1.1
Non-Resident Alien	26	0.8	30	0.9	32	0.9	35	1.0	44	1.2
Unknown or Not Reported	0	0.0	0	0.0	0	0.0	0	0.0	6	0.2
Totals	3,390	100.1	3,374	100.1	3,390	99.9	3,592	100.0	3,732	100.1
Sex										
Male	1,123	33.1	1,119	33.2	1,132	33.4	1,226	34.1	1,281	34.3
Female	2,267	66.9	2,255	66.8	2,258	66.6	2,366	65.9	2,451	65.7
Totals	3,390	100.0	3,374	100.0	3,390	100.0	3,592	100.0	3,732	100.0

Notes: Beginning with Fall 1998, "Unknown or Not Reported" has been introduced into the ethnic options for students. Previous years do not include this option. "Undergraduate" includes the classifications freshman, sophomore, junior, senior, and post-baccalaureate (but not in graduate programs). Percentage totals may not sum to 100.0% due to rounding.

Source: Texas Higher Education Coordinating Board (THECB).

Fall 2001 data obtained from preliminary CBM-001 reports to the THECB, not certified.

Student Demographics Undergraduate and Graduate Fall Enrollment

Arlington

Undergraduate

Headcount	1997	%	1998	%	1999	%	2000	%	2001	%
Ethnic Origin										
Anglo	10,005	64.8	9,337	62.9	9,255	60.6	9,119	59.0	9,165	56.1
African-American	1,537	10.0	1,657	11.2	1,906	12.5	1,998	12.9	2,131	13.0
Hispanic	1,492	9.7	1,505	10.1	1,684	11.0	1,846	11.9	1,994	12.2
Asian-American	1,875	12.1	1,794	12.1	1,779	11.7	1,718	11.1	1,812	11.1
Native American	117	0.8	107	0.7	119	0.8	111	0.7	131	0.8
Non-Resident Alien	415	2.7	444	3.0	523	3.4	657	4.3	815	5.0
Unknown or Not Reported	0	0.0	0	0.0	0	0.0	0	0.0	282	1.7
Totals	15,441	100.1	14,844	100.0	15,266	100.0	15,449	99.9	16,330	99.9
Sex										
Male	7,520	48.7	7,116	47.9	7,243	47.4	7,215	46.7	7,620	46.7
Female	7,921	51.3	7,728	52.1	8,023	52.6	8,234	53.3	8,710	53.3
Totals	15,441	100.0	14,844	100.0	15,266	100.0	15,449	100.0	16,330	100.0

Graduate

Headcount	1997	%	1998	%	1999	%	2000	%	2001	%
Ethnic Origin										
Anglo	2,416	62.8	2,343	61.4	2,286	58.9	2,710	54.5	2,486	51.3
African-American	201	5.2	244	6.4	260	6.7	471	9.5	354	7.3
Hispanic	162	4.2	164	4.3	189	4.9	366	7.4	252	5.2
Asian-American	209	5.4	189	5.0	183	4.7	191	3.8	237	4.9
Native American	21	0.5	15	0.4	25	0.6	29	0.6	21	0.4
Non-Resident Alien	836	21.7	863	22.6	940	24.2	1,208	24.3	1,498	30.9
Unknown or Not Reported	0	0.0	0	0.0	0	0.0	0	0.0	2	0.0
Totals	3,845	99.8	3,818	100.1	3,883	100.0	4,975	100.1	4,850	100.0
Sex										
Male	2,006	52.2	1,877	49.2	1,902	49.0	2,232	44.9	2,429	50.1
Female	1,839	47.8	1,941	50.8	1,981	51.0	2,743	55.1	2,421	49.9
Totals	3,845	100.0	3,818	100.0	3,883	100.0	4,975	100.0	4,850	100.0

Notes: Beginning with Fall 1998, "Unknown or Not Reported" has been introduced into the ethnic options for students. Previous years do not include this option. "Undergraduate" includes the classifications freshman, sophomore, junior, senior, and post-baccalaureate (but not in graduate programs). Percentage totals may not sum to 100.0% due to rounding.

Source: Texas Higher Education Coordinating Board (THECB).

Fall 2001 data obtained from preliminary CBM-001 reports to the THECB, not certified.

Student Demographics Undergraduate and Graduate Fall Enrollment

Austin Undergraduate

Headcount	1997	%	1998	%	1999	%	2000	%	2001	%
Ethnic Origin										
Anglo	24,219	65.7	24,200	65.0	24,007	64.6	24,341	63.8	24,200	62.7
African-American	1,353	3.7	1,311	3.5	1,277	3.4	1,298	3.4	1,335	3.5
Hispanic	5,234	14.2	5,154	13.9	5,106	13.7	5,152	13.5	5,239	13.6
Asian-American	4,783	13.0	5,104	13.7	5,372	14.5	5,695	14.9	6,126	15.9
Native American	182	0.5	182	0.5	166	0.4	175	0.5	164	0.4
Non-Resident Alien	1,090	3.0	1,227	3.3	1,158	3.1	1,364	3.6	1,333	3.5
Unknown or Not Reported	0	0.0	25	0.1	73	0.2	137	0.4	212	0.5
Totals	36,861	100.1	37,203	100.0	37,159	99.9	38,162	100.1	38,609	100.1
Sex										
Male	18,423	50.0	18,514	49.8	18,433	49.6	18,902	49.5	19,096	49.5
Female	18,438	50.0	18,689	50.2	18,726	50.4	19,260	50.5	19,513	50.5
Totals	36,861	100.0	37,203	100.0	37,159	100.0	38,162	100.0	38,609	100.0

Graduate

Headcount	1997	%	1998	%	1999	%	2000	%	2001	%
Ethnic Origin										
Anglo	7,850	65.4	7,372	63	7,140	60.3	7,027	59.4	6,848	57
African-American	367	3.1	305	2.6	274	2.3	284	2.4	271	2.3
Hispanic	914	7.6	810	6.9	806	6.8	768	6.5	853	7.1
Asian-American	517	4.3	515	4.4	575	4.9	541	4.6	577	4.8
Native American	48	0.4	57	0.5	56	0.5	54	0.5	39	0.3
Non-Resident Alien	2,300	19.2	2,566	21.9	2,802	23.6	2,922	24.7	3,148	26.2
Unknown or Not Reported	0	0	78	0.7	197	1.7	238	2	271	2.3
Totals	11,996	100.0	11,703	100.0	11,850	100.1	11,834	100.1	12,007	100.0
Sex										
Male	6,482	54	6,268	53.6	6,245	52.7	6,278	53.1	6,354	52.9
Female	5,514	46	5,435	46.4	5,605	47.3	5,556	46.9	5,653	47.1
Total	11,996	100.0	11,703	100.0	11,850	100.0	11,834	100.0	12,007	100.0

Notes: Beginning with Fall 1998, "Unknown or Not Reported" has been introduced into the ethnic options for students. Previous years do not include this option. "Undergraduate" includes the classifications freshman, sophomore, junior, senior, and post-baccalaureate (but not in graduate programs). Percentage totals may not sum to 100.0% due to rounding.

Source: Texas Higher Education Coordinating Board (THECB).

Fall 2001 data obtained from preliminary CBM-001 reports to the THECB, not certified.

Student Demographics Undergraduate and Graduate Fall Enrollment

Brownsville Undergraduate

Headcount	1997	%	1998	%	1999	%	2000	%	2001	%
Ethnic Origin										
Anglo	425	5.7	395	5.4	471	4.9	455	4.8	449	4.5
African-American	9	0.1	12	0.2	15	0.2	25	0.3	27	0.3
Hispanic	6,970	92.9	6,880	93.4	8,967	93.0	8,792	92.4	9,273	94.0
Asian-American	20	0.3	12	0.2	21	0.2	26	0.3	21	0.2
Native American	6	0.1	3	0.0	16	0.2	8	0.1	5	0.1
Non-Resident Alien	72	1.0	62	0.8	153	1.6	153	1.6	80	0.8
Unknown or Not Reported	0	0.0	0	0.0	0	0.0	56	0.6	15	0.2
Totals	7,502	100.1	7,364	100.0	9,643	100.1	9,515	100.1	9,870	100.1
Sex										
Male	2,857	38.1	2,907	39.5	3,806	39.5	3,701	38.9	3,826	38.8
Female	4,645	61.9	4,457	60.5	5,837	60.5	5,814	61.1	6,044	61.2
Totals	7,502	100.0	7,364	100.0	9,643	100.0	9,515	100.0	9,870	100.0

Graduate

Headcount	1997	%	1998	%	1999	%	2000	%	2001	%
Ethnic Origin										
Anglo	164	23.9	147	21.2	180	22.8	151	20.0	202	24.2
African-American	3	0.4	5	0.7	3	0.4	4	0.5	3	0.4
Hispanic	469	68.4	502	72.5	552	69.9	571	75.5	587	70.4
Asian-American	4	0.6	3	0.4	6	0.8	5	0.7	6	0.7
Native American	3	0.4	1	0.1	3	0.4	0	0.0	3	0.4
Non-Resident Alien	43	6.3	34	4.9	46	5.8	22	2.9	32	3.8
Unknown or Not Reported	0	0.0	0	0.0	0	0.0	3	0.4	1	0.1
Totals	686	100.0	692	99.8	790	100.1	756	100.0	834	100.0
Sex										
Male	257	37.5	251	36.3	294	37.2	267	35.3	308	36.9
Female	429	62.5	441	63.7	496	62.8	489	64.7	526	63.1
Totals	686	100.0	692	100.0	790	100.0	756	100.0	834	100.0

Notes: Beginning with Fall 1998, "Unknown or Not Reported" has been introduced into the ethnic options for students. Previous years do not include this option. "Undergraduate" includes the classifications freshman, sophomore, junior, senior, and post-baccalaureate (but not in graduate programs). Percentage totals may not sum to 100.0% due to rounding.

Source: Texas Higher Education Coordinating Board (THECB).

Fall 2001 data obtained from preliminary CBM-001 reports to the THECB, not certified.

Student Demographics Undergraduate and Graduate Fall Enrollment

Dallas Undergraduate

Headcount	1997	%	1998	%	1999	%	2000	%	2001	%
Ethnic Origin										
Anglo	4,267	65.7	4,366	63.4	4,524	61.7	4,640	59.1	5,114	56.8
African-American	422	6.5	443	6.4	524	7.1	589	7.5	731	8.1
Hispanic	439	6.8	507	7.4	511	7.0	612	7.8	726	8.1
Asian-American	1,099	16.9	1,288	18.7	1,390	19.0	1,620	20.6	1,872	20.8
Native American	39	0.6	48	0.7	37	0.5	45	0.6	44	0.5
Non-Resident Alien	227	3.5	234	3.4	345	4.7	333	4.2	477	5.3
Unknown or Not Reported	0	0.0	0	0.0	0	0.0	7	0.1	45	0.5
Totals	6,493	100.0	6,886	100.0	7,331	100.0	7,846	99.9	9,009	100.1
Sex										
Male	3,313	51.0	3,502	50.9	3,765	51.4	4,067	51.8	4,667	51.8
Female	3,180	49.0	3,384	49.1	3,566	48.6	3,779	48.2	4,342	48.2
Totals	6,493	100.0	6,886	100.0	7,331	100.0	7,846	100.0	9,009	100.0

Graduate

Headcount	1997	%	1998	%	1999	%	2000	%	2001	%
Ethnic Origin										
Anglo	1,628	57.7	1,399	53.2	1,379	49.8	1,365	44.0	1,335	38.7
African-American	91	3.2	75	2.8	91	3.3	108	3.5	99	2.9
Hispanic	81	2.9	79	3.0	86	3.1	89	2.9	103	3.0
Asian-American	318	11.3	322	12.2	262	9.5	394	12.7	369	10.7
Native American	10	0.4	6	0.2	4	0.1	8	0.3	12	0.3
Non-Resident Alien	695	24.6	751	28.5	948	34.2	1,137	36.6	1,519	44.1
Unknown or Not Reported	0	0.0	0	0.0	0	0.0	3	0.1	9	0.3
Totals	2,823	100.1	2,632	99.9	2,770	100.0	3,104	100.1	3,446	100.0
Sex										
Male	1,545	54.7	1,473	56.0	1,559	56.3	1,772	57.1	1,986	57.6
Female	1,278	45.3	1,159	44.0	1,211	43.7	1,332	42.9	1,460	42.4
Totals	2,823	100.0	2,632	100.0	2,770	100.0	3,104	100.0	3,446	100.0

Notes: Beginning with Fall 1998, "Unknown or Not Reported" has been introduced into the ethnic options for students. Previous years do not include this option. "Undergraduate" includes the classifications freshman, sophomore, junior, senior, and post-baccalaureate (but not in graduate programs). Percentage totals may not sum to 100.0% due to rounding.

Source: Texas Higher Education Coordinating Board (THECB).

Fall 2001 data obtained from preliminary CBM-001 reports to the THECB, not certified.

Student Demographics Undergraduate and Graduate Fall Enrollment

El Paso Undergraduate

Headcount	1997	%	1998	%	1999	%	2000	%	2001	%
Ethnic Origin										
Anglo	1,983	15.4	1,838	14.7	1,741	13.9	1,596	12.3	1,609	11.8
African-American	350	2.7	315	2.5	292	2.3	320	2.5	330	2.4
Hispanic	8,999	70.0	8,886	70.8	8,969	71.6	9,389	72.5	9,890	72.5
Asian-American	184	1.4	166	1.3	173	1.4	165	1.3	166	1.2
Native American	34	0.3	40	0.3	39	0.3	36	0.3	41	0.3
Non-Resident Alien	1,305	10.2	1,300	10.4	1,319	10.5	1,449	11.2	1,606	11.8
Unknown or Not Reported	0	0.0	0	0.0	0	0.0	0	0.0	0	0.0
Totals	12,855	100.0	12,545	100.0	12,533	100.0	12,955	100.1	13,642	100.0
Sex										
Male	5,985	46.6	5,866	46.8	5,839	46.6	5,969	46.1	6,221	45.6
Female	6,870	53.4	6,679	53.2	6,694	53.4	6,986	53.9	7,421	54.4
Totals	12,855	100.0	12,545	100.0	12,533	100.0	12,955	100.0	13,642	100.0

Graduate

Headcount	1997	%	1998	%	1999	%	2000	%	2001	%
Ethnic Origin										
Anglo	880	37.9	746	35.0	698	32.3	660	29.1	664	25.8
African-American	62	2.7	51	2.4	51	2.4	50	2.2	61	2.4
Hispanic	1,039	44.8	1,002	47.0	1,058	48.9	1,199	52.8	1,349	52.3
Asian-American	52	2.2	46	2.2	46	2.1	42	1.9	48	1.9
Native American	14	0.6	8	0.4	9	0.4	4	0.2	8	0.3
Non-Resident Alien	274	11.8	279	13.1	300	13.9	314	13.8	448	17.4
Unknown or Not Reported	0	0.0	0	0.0	0	0.0	0	0.0	0	0.0
Totals	2,321	100.0	2,132	100.1	2,162	100.0	2,269	100.0	2,578	100.1
Sex										
Male	1,032	44.5	938	44.0	946	43.8	960	42.3	1,109	43.0
Female	1,289	55.5	1,194	56.0	1,216	56.2	1,309	57.7	1,469	57.0
Totals	2,321	100.0	2,132	100.0	2,162	100.0	2,269	100.0	2,578	100.0

Notes: Beginning with Fall 1998, "Unknown or Not Reported" has been introduced into the ethnic options for students. Previous years do not include this option. "Undergraduate" includes the classifications freshman, sophomore, junior, senior, and post-baccalaureate (but not in graduate programs). Percentage totals may not sum to 100.0% due to rounding.

Source: Texas Higher Education Coordinating Board (THECB).

Fall 2001 data obtained from preliminary CBM-001 reports to the THECB, not certified.

Student Demographics Undergraduate and Graduate Fall Enrollment

Pan American Undergraduate

Headcount	1997	%	1998	%	1999	%	2000	%	2001	%
Ethnic Origin										
Anglo	1,097	9.7	1,161	10.8	1,303	11.9	1,327	11.9	1,257	10.5
African-American	69	0.6	54	0.5	53	0.5	55	0.5	50	0.4
Hispanic	9,867	87.5	9,283	86.4	9,293	85.1	9,482	84.8	10,315	86.2
Asian-American	81	0.7	86	0.8	95	0.9	105	0.9	126	1.1
Native American	8	0.1	10	0.1	11	0.1	13	0.1	18	0.2
Non-Resident Alien	158	1.4	150	1.4	169	1.5	204	1.8	206	1.7
Unknown or Not Reported	0	0.0	0	0.0	0	0.0	0	0.0	0.0	0.0
Totals	11,280	100.0	10,744	100.0	10,924	100.0	11,186	100.0	11,972	100.1
Sex										
Male	4,949	43.9	4,679	43.5	4,678	42.8	4,711	42.1	4,954	41.4
Female	6,331	56.1	6,065	56.5	6,246	57.2	6,475	57.9	7,018	58.6
Totals	11,280	100.0	10,744	100.0	10,924	100.0	11,186	100.0	11,972	100.0

Graduate

Headcount	1997	%	1998	%	1999	%	2000	%	2001	%
Ethnic Origin										
Anglo	280	22.9	341	20.9	299	18.2	243	15.4	249	14.9
African-American	7	0.6	11	0.7	9	0.5	8	0.5	13	0.8
Hispanic	868	71.1	1,166	71.6	1,209	73.5	1,206	76.6	1,273	76.3
Asian-American	12	1.0	20	1.2	31	1.9	28	1.8	30	1.8
Native American	4	0.3	2	0.1	4	0.2	2	0.1	6	0.4
Non-Resident Alien	50	4.1	89	5.5	94	5.7	87	5.5	98	5.9
Unknown or Not Reported	0	0.0	0	0.0	0	0.0	0	0.0		0.0
Totals	1,221	100.0	1,629	100.0	1,646	100.0	1,574	99.9	1,669	100.1
Sex										
Male	443	36.3	604	37.1	585	35.5	571	36.3	609	36.5
Female	778	63.7	1,025	62.9	1,061	64.5	1,003	63.7	1,060	63.5
Totals	1,221	100.0	1,629	100.0	1,646	100.0	1,574	100.0	1,669	100.0

Notes: Beginning with Fall 1998, "Unknown or Not Reported" has been introduced into the ethnic options for students. Previous years do not include this option. "Undergraduate" includes the classifications freshman, sophomore, junior, senior, and post-baccalaureate (but not in graduate programs). Percentage totals may not sum to 100.0% due to rounding.

Source: Texas Higher Education Coordinating Board (THECB).

Fall 2001 data obtained from preliminary CBM-001 reports to the THECB, not certified.

Student Demographics Undergraduate and Graduate Fall Enrollment

Permian Basin Undergraduate

Headcount	1997	%	1998	%	1999	%	2000	%	2001	%
Ethnic Origin										
Anglo	1,316	69.9	1,308	66.8	1,314	66.7	1,240	62.6	1,259	60.6
African-American	70	3.7	87	4.4	69	3.5	74	3.7	70	3.4
Hispanic	457	24.3	526	26.9	552	28.0	629	31.8	702	33.8
Asian-American	20	1.1	18	0.9	14	0.7	16	0.8	20	1.0
Native American	12	0.6	13	0.7	14	0.7	14	0.7	11	0.5
Non-Resident Alien	7	0.4	7	0.4	7	0.4	6	0.3	4	0.2
Unknown or Not Reported	0	0.0	0	0.0	0	0.0	1	0.1	11	0.5
Totals	1,882	100.0	1,959	100.1	1,970	100.0	1,980	100.0	2,077	100.0
Sex										
Male	664	35.3	662	33.8	694	35.2	711	35.9	695	33.5
Female	1,218	64.7	1,297	66.2	1,276	64.8	1,269	64.1	1,382	66.5
Totals	1,882	100.0	1,959	100.0	1,970	100.0	1,980	100.0	2,077	100.0

Graduate

Headcount	1997	%	1998	%	1999	%	2000	%	2001	%
Ethnic Origin										
Anglo	203	81.9	214	83.9	200	78.7	235	80.2	260	78.3
African-American	8	3.2	6	2.4	7	2.8	7	2.4	11	3.3
Hispanic	34	13.7	33	12.9	41	16.1	47	16.0	54	16.3
Asian-American	3	1.2	1	0.4	6	2.4	3	1.0	5	1.5
Native American	0	0.0	1	0.4	0	0.0	0	0.0	0	0.0
Non-Resident Alien	0	0.0	0	0.0	0	0.0	1	0.3	2	0.6
Unknown or Not Reported	0	0.0	0	0.0	0	0.0	0	0.0	0	0.0
Totals	248	100.0	255	100.0	254	100.0	293	99.9	332	100.0
Sex										
Male	82	33.1	96	37.6	92	36.2	113	38.6	130	39.2
Female	166	66.9	159	62.4	162	63.8	180	61.4	202	60.8
Totals	248	100.0	255	100.0	254	100.0	293	100.0	332	100.0

Notes: Beginning with Fall 1998, "Unknown or Not Reported" has been introduced into the ethnic options for students. Previous years do not include this option. "Undergraduate" includes the classifications freshman, sophomore, junior, senior, and post-baccalaureate (but not in graduate programs). Percentage totals may not sum to 100.0% due to rounding.

Source: Texas Higher Education Coordinating Board (THECB).

Fall 2001 data obtained from preliminary CBM-001 reports to the THECB, not certified.

Student Demographics Undergraduate and Graduate Fall Enrollment

San Antonio

Undergraduate

Headcount	1997	%	1998	%	1999	%	2000	%	2001	%
Ethnic Origin										
Anglo	7,331	47.6	7,451	46.0	7,138	43.5	6,753	42.0	7,256	41.2
African-American	711	4.6	761	4.7	842	5.1	843	5.2	963	5.5
Hispanic	6,542	42.4	7,144	44.1	7,496	45.7	7,584	47.1	8,317	47.3
Asian-American	583	3.8	578	3.6	586	3.6	559	3.5	681	3.9
Native American	77	0.5	63	0.4	69	0.4	77	0.5	81	0.5
Non-Resident Alien	171	1.1	215	1.3	285	1.7	277	1.7	301	1.7
Unknown or Not Reported	0	0.0	0	0.0	0	0.0	0	0.0	0	0.0
Totals	15,415	100.0	16,212	100.1	16,416	100.0	16,093	100.0	17,599	100.1
Sex										
Male	7,040	45.7	7,345	45.3	7,396	45.1	7,197	44.7	7,923	45.0
Female	8,375	54.3	8,867	54.7	9,020	54.9	8,896	55.3	9,676	55.0
Totals	15,415	100.0	16,212	100.0	16,416	100.0	16,093	100.0	17,599	100.0

Graduate

Headcount	1997	%	1998	%	1999	%	2000	%	2001	%
Ethnic Origin										
Anglo	1,264	60.8	1,248	57.3	1,196	54.6	1,472	53.8	1,174	51.4
African-American	58	2.8	77	3.5	71	3.2	105	3.8	70	3.1
Hispanic	550	26.5	653	30.0	727	33.2	914	33.4	742	32.5
Asian-American	74	3.6	78	3.6	67	3.1	79	2.9	54	2.4
Native American	9	0.4	9	0.4	12	0.5	18	0.7	16	0.7
Non-Resident Alien	124	6.0	114	5.2	119	5.4	149	5.4	228	10.0
Unknown or Not Reported	0	0.0	0	0.0	0	0.0	0	0.0	0	0.0
Totals	2,079	100.1	2,179	100.0	2,192	100.0	2,737	100.0	2,284	100.1
Sex:										
Male	953	45.8	963	44.2	921	42.0	1,129	41.2	963	42.2
Female	1,126	54.2	1,216	55.8	1,271	58.0	1,608	58.8	1,321	57.8
Totals	2,079	100.0	2,179	100.0	2,192	100.0	2,737	100.0	2,284	100.0

Notes: Beginning with Fall 1998, "Unknown or Not Reported" has been introduced into the ethnic options for students. Previous years do not include this option. "Undergraduate" includes the classifications freshman, sophomore, junior, senior, and post-baccalaureate (but not in graduate programs). Percentage totals may not sum to 100.0% due to rounding.

Source: Texas Higher Education Coordinating Board (THECB).

Fall 2001 data obtained from preliminary CBM-001 reports to the THECB, not certified.

Student Demographics Undergraduate and Graduate Fall Enrollment

Tyler Undergraduate

Headcount	1997	%	1998	%	1999	%	2000	%	2001	%
Ethnic Origin										
Anglo	2,191	86.8	2,291	85.4	2,373	84.7	2,453	84.8	2,530	84.2
African-American	200	7.9	227	8.5	262	9.3	264	9.1	268	8.9
Hispanic	64	2.5	77	2.9	79	2.8	95	3.3	109	3.6
Asian-American	36	1.4	37	1.4	33	1.2	28	1.0	31	1.0
Native American	26	1.0	34	1.3	35	1.2	32	1.1	33	1.1
Non-Resident Alien	8	0.3	16	0.6	21	0.7	21	0.7	28	0.9
Unknown or Not Reported	0	0.0	0	0.0	0	0.0	0	0.0	5	0.2
Totals	2,525	99.9	2,682	100.1	2,803	99.9	2,893	100.0	3,004	99.9
Sex										
Male	820	32.5	898	33.5	926	33.0	963	33.3	1,029	34.3
Female	1,705	67.5	1,784	66.5	1,877	67.0	1,930	66.7	1,975	65.7
Totals	2,525	100.0	2,682	100.0	2,803	100.0	2,893	100.0	3,004	100.0

Graduate

Headcount	1997	%	1998	%	1999	%	2000	%	2001	%
Ethnic Origin										
Anglo	720	83.2	571	82.5	493	84.0	578	82.7	591	81.2
African-American	84	9.7	72	10.4	53	9.0	68	9.7	70	9.6
Hispanic	22	2.5	23	3.3	19	3.2	23	3.3	29	4.0
Asian-American	14	1.6	6	0.9	5	0.9	13	1.9	14	1.9
Native American	7	0.8	6	0.9	6	1.0	3	0.4	7	1.0
Non-Resident Alien	18	2.1	14	2.0	11	1.9	14	2.0	16	2.2
Unknown or Not Reported	0	0.0	0	0.0	0	0.0	0	0.0	1	0.1
Totals	865	99.9	692	100.0	587	100.0	699	100.0	728	100.0
Sex										
Male	303	35.0	221	31.9	206	35.1	263	37.6	252	34.6
Female	562	65.0	471	68.1	381	64.9	436	62.4	476	65.4
Totals	865	100.0	692	100.0	587	100.0	699	100.0	728	100.0

Notes: Beginning with Fall 1998, "Unknown or Not Reported" has been introduced into the ethnic options for students. Previous years do not include this option. "Undergraduate" includes the classifications freshman, sophomore, junior, senior, and post-baccalaureate (but not in graduate programs). Percentage totals may not sum to 100.0% due to rounding.

Source: Texas Higher Education Coordinating Board (THECB).

Fall 2001 data obtained from preliminary CBM-001 reports to the THECB, not certified.

Student Demographics Total Fall Enrollment

Southwestern Medical Center at Dallas

Enrollment

Headcount	1997	%	1998	%	1999	%	2000	%	2001	%
Ethnic Origin										
Anglo	1,060	66.2	1,017	65.7	1,004	64.7	903	60.0	873	56.2
African-American	58	3.6	62	4.0	72	4.6	70	4.7	79	5.1
Hispanic	94	5.9	90	5.8	98	6.3	112	7.4	130	8.4
Asian-American	271	16.9	254	16.4	260	16.8	279	18.5	281	18.1
Native American	11	0.7	9	0.6	3	0.2	4	0.3	7	0.5
Non-Resident Alien	108	6.7	116	7.5	115	7.4	137	9.1	184	11.8
Unknown or Not Reported	0	0.0	0	0.0	0	0.0	0	0.0	0	0.0
Totals	1,602	100.0	1,548	100.0	1,552	100.0	1,505	100.0	1,554	100.1
Sex										
Male	886	55.3	870	56.2	838	54.0	802	53.3	790	50.8
Female	716	44.7	678	43.8	714	46.0	703	46.7	764	49.2
Totals	1,602	100.0	1,548	100.0	1,552	100.0	1,505	100.0	1,554	100.0

Note: Percentage totals may not sum to 100.0% due to rounding.

Student Demographics Total Fall Enrollment

Medical Branch at Galveston

Enrollment

Headcount	1997	%	1998	%	1999	%	2000	%	2001	%
Ethnic Origin										
Anglo	1,285	60.4	1,138	57.3	1,100	56.3	1,084	56.0	1,100	57.1
African American	188	8.8	176	8.9	173	8.9	182	9.4	167	8.7
Hispanic	317	14.9	328	16.5	339	17.4	315	16.3	302	15.7
Asian	234	11.0	246	12.4	242	12.4	235	12.1	225	11.7
Native American	13	0.6	13	0.7	6	0.3	13	0.7	11	0.6
Non-Resident Alien	90	4.2	86	4.3	93	4.8	107	5.5	122	6.3
Unknown or Not Reported	0	0.0	0	0.0	0	0.0	0	0.0	0	0.0
Totals	2,127	99.9	1,987	100.1	1,953	100.1	1,936	100.0	1,927	100.1
Sex										
Male	865	40.7	805	40.5	762	39.0	703	36.3	708	36.7
Female	1,262	59.3	1,182	59.5	1,191	61.0	1,233	63.7	1,219	63.3
Totals:	2,127	100.0	1,987	100.0	1,953	100.0	1,936	100.0	1,927	100.0

Note: Percentage totals may not sum to 100.0% due to rounding.

Student Demographics Total Fall Enrollment

Health Science Center at Houston

Enrollment

Headcount	1997	%	1998	%	1999	%	2000	%	2001	%
Ethnic Origin										
Anglo	1,869	60.5	1,906	60.7	1,938	61.1	1,926	61.3	1,949	59.3
African-American	186	6.0	166	5.3	167	5.3	173	5.5	210	6.4
Hispanic	355	11.5	350	11.1	329	10.4	322	10.2	381	11.6
Asian-American	415	13.4	434	13.8	433	13.7	425	13.5	428	13.1
Native American	13	0.4	22	0.7	19	0.6	16	0.5	17	0.5
Non-Resident Alien	251	8.1	262	8.3	284	9.0	281	8.9	277	8.4
Unknown or Not Reported	0	0.0	0	0.0	0	0.0	0	0.0	24	0.7
Totals	3,089	99.9	3,140	99.9	3,170	100.1	3,143	99.9	3,286	99.3
Sex										
Male	1,276	41.3	1,246	39.7	1,269	40.0	1,274	40.5	1,326	40.3
Female	1,813	58.7	1,894	60.3	1,901	60.0	1,869	59.5	1,961	59.7
Totals	3,089	100.0	3,140	100.0	3,170	100.0	3,143	100.0	3,286	100.0

Note: Percentage totals may not sum to 100.0% due to rounding.

Student Demographics Total Fall Enrollment

Health Science Center at San Antonio

Enrollment

Headcount	1997	%	1998	%	1999	%	2000	%	2001	%
Ethnic Origin										
Anglo	1,713	63.7	1,654	60.9	1,614	63.1	1,546	60.8	1,617	60.7
African-American	93	3.5	92	3.4	84	3.3	83	3.3	97	3.6
Hispanic	452	16.8	514	18.9	492	19.2	542	21.3	637	23.9
Asian-American	322	12.0	291	10.7	256	10.0	219	8.6	200	7.5
Native American	20	0.7	19	0.7	16	0.6	13	0.5	11	0.4
Non-Resident Alien	89	3.3	147	5.4	95	3.7	141	5.5	103	3.9
Unknown or Not Reported	0	0.0	0	0.0	0	0.0	0	0.0	0	0.0
Totals	2,689	100.0	2,717	100.0	2,557	99.9	2,544	100.0	2,665	100.0
Sex										
Male	1,167	43.4	1,108	40.8	1,058	41.4	1,058	41.6	1,093	41.0
Female	1,522	56.6	1,609	59.2	1,499	58.6	1,486	58.4	1,572	59.0
Totals	2,689	100.0	2,717	100.0	2,557	100.0	2,544	100.0	2,665	100.0

Note: Percentage totals may not sum to 100.0% due to rounding.

Student Demographics Total Fall Enrollment

M. D. Anderson Cancer Center

Enrollment

Headcount	1997	%	1998	%	1999	%	2000	%	2001	%
Ethnic Origin:										
Anglo	0	0	0	0	0	0	24	57.1	32	66.7
African-American	0	0	0	0	0	0	7	16.7	3	6.3
Hispanic	0	0	0	0	0	0	5	11.9	1	2.1
Asian-American	0	0	0	0	0	0	4	9.5	10	20.8
American Indian	0	0	0	0	0	0	0	0.0	1	2.1
Non-Resident Alien	0	0	0	0	0	0	2	4.8	1	2.1
Unknown or Not Reported	0	0	0	0	0	0	0	0.0	0	0.0
Totals	0	0	0	0	0	0	42	100.0	48	100.1
Sex										
Male	0	0	0	0	0	0	16	38.1	18	37.5
Female	0	0	0	0	0	0	26	61.9	30	62.5
Totals	0	0	0	0	0	0	42	100.0	48	100.0

Note: Percentage totals may not sum to 100.0% due to rounding.

Student Demographics Undergraduate and Graduate Fall Enrollment

Southwestern Medical Center at Dallas

Undergraduate

Ethnic Origin

Anglo	263	75.1	238	74.6	163	66.3	148	61.9	122	56.7
African-American	32	9.1	33	10.3	37	15.0	31	13.0	27	12.6
Hispanic	19	5.4	16	5.0	17	6.9	19	7.9	22	10.2
Asian-American	28	8.0	21	6.6	19	7.7	17	7.1	12	5.6
Native American	2	0.6	2	0.6	1	0.4	1	0.4	3	1.4
Non-Resident Alien	6	1.7	9	2.8	9	3.7	23	9.6	29	13.5
Unknown or Not Reported	0	0.0	0	0.0	0	0.0	0	0.0	0	0.0

Sex

Male	102	29.1	100	31.3	67	27.2	57	23.8	58	27.0
Female	248	70.9	219	68.7	179	72.8	182	76.2	157	73.0

Graduate

Ethnic Origin

White	797	63.7	779	63.4	841	64.4	755	59.6	751	56.1
African American	26	2.1	29	2.4	35	2.7	39	3.1	52	3.9
Hispanic	75	6.0	74	6.0	81	6.2	93	7.3	108	8.1
Asian	243	19.4	233	19.0	241	18.5	262	20.7	269	20.1
Native American	9	0.7	7	0.6	2	0.2	3	0.2	4	0.3
Non-Resident Alien	102	8.1	107	8.7	106	8.1	114	9.0	155	11.6
Unknown or Not Reported	0	0.0	0	0.0	0	0.0	0	0.0	0	0.0

Sex

Male	784	62.6	770	62.7	771	59.0	745	58.8	732	54.7
Female	468	37.4	459	37.3	535	41.0	521	41.2	607	45.3

Notes: "Undergraduate" includes the classifications freshman, sophomore, junior, senior, and post-baccalaureate (but not in graduate programs). Percentage totals may not sum to 100.0% due to rounding.

Source: U.T. System Office of Health Affairs.

Student Demographics Undergraduate and Graduate Fall Enrollment

Medical Branch at Galveston

Undergraduate

Headcount	1997	%	1998	%	1999	%	2000	%	2001	%
Ethnic Origin										
Anglo	503	65.0	439	63.6	399	61.0	393	60.2	345	61.4
African-American	76	9.8	69	10.0	65	9.9	82	12.6	68	12.1
Hispanic	103	13.3	100	14.5	105	16.1	100	15.3	86	15.3
Asian-American	84	10.9	72	10.4	74	11.3	59	9.0	38	6.8
Native American	2	0.3	3	0.4	1	0.2	0	0.0	3	0.5
Non-Resident Alien	6	0.8	7	1.0	10	1.5	19	2.9	22	3.9
Unknown or Not Reported	0	0.0	0	0.0	0	0.0	0	0.0	0	0.0
Totals	774	100.1	690	99.9	654	100.0	653	100.0	562	100.0
Sex										
Male	188	24.3	171	24.8	138	21.1	95	14.5	84	14.9
Female	586	75.7	519	75.2	516	78.9	558	85.5	478	85.1
Totals	774	100.0	690	100.0	654	100.0	653	100.0	562	100.0

Graduate

Headcount	1997	%	1998	%	1999	%	2000	%	2001	%
Ethnic Origin										
Anglo	782	57.8	699	53.9	701	54.0	691	53.9	755	55.3
African-American	112	8.3	107	8.2	108	8.3	100	7.8	99	7.3
Hispanic	214	15.8	228	17.6	234	18.0	215	16.8	216	15.8
Asian-American	150	11.1	174	13.4	168	12.9	176	13.7	187	13.7
Native American	11	0.8	10	0.8	5	0.4	13	1.0	8	0.6
Non-Resident Alien	84	6.2	79	6.1	83	6.4	88	6.9	100	7.3
Unknown or Not Reported	0	0.0	0	0.0	0	0.0	0	0.0	0	0.0
Totals	1,353	100.0	1,297	100.0	1,299	100.0	1,283	100.1	1,365	100.0
Sex										
Male	677	50.0	634	48.9	624	48.0	608	47.4	624	45.7
Female	676	50.0	663	51.1	675	52.0	675	52.6	741	54.3
Totals	1,353	100.0	1,297	100.0	1,299	100.0	1,283	100.0	1,365	100.0

Notes: "Undergraduate" includes the classifications freshman, sophomore, junior, senior, and post-baccalaureate (but not in graduate programs). Percentage totals may not sum to 100.0% due to rounding.

Source: U.T. System Office of Health Affairs.

Student Demographics Undergraduate and Graduate Enrollment

Health Science Center at Houston

Undergraduate

Headcount	1997	%	1998	%	1999	%	2000	%	2001	%
Ethnic Origin										
Anglo	162	68.1	158	64.2	162	62.1	165	62.5	199	60.3
African-American	20	8.4	20	8.1	25	9.6	29	11.0	46	13.9
Hispanic	22	9.2	28	11.4	36	13.8	41	15.5	42	12.7
Asian-American	32	13.4	37	15.0	34	13.0	26	9.8	40	12.1
Native American	0	0.0	0	0.0	0	0.0	1	0.4	0	0.0
Non-Resident Alien	2	0.8	3	1.2	4	1.5	2	0.8	3	0.9
Unknown or Not Reported	0	0.0	0	0.0	0	0.0	0	0.0	0	0.0
Totals	238	99.9	246	99.9	261	100.0	264	100.0	330	99.9
Sex										
Male	19	8.0	19	7.7	18	6.9	24	9.1	33	10.0
Female	219	92.0	227	92.3	243	93.1	240	90.9	297	90.0
Totals	238	100.0	246	100.0	261	100.0	264	100.0	330	100.0

Graduate

Headcount	1997	%	1998	%	1999	%	2000	%	2001	%
Ethnic Origin										
Anglo	1,707	59.9	1,748	60.4	1,776	61.1	1,761	61.2	1,750	59.2
African American	166	5.8	146	5.0	142	4.9	144	5.0	164	5.5
Hispanic	333	11.7	322	11.1	293	10.1	281	9.8	339	11.5
Asian	383	13.4	397	13.7	399	13.7	399	13.9	388	13.2
Native American	13	0.5	22	0.8	19	0.7	15	0.5	17	0.6
Non-Resident Alien	249	8.7	259	8.9	280	9.6	279	9.7	274	9.3
Unknown or Not Reported	0	0.0	0	0.0	0	0.0	0	0.0	24	7.3
Totals	2,851	100.0	2,894	99.9	2,909	100.1	2,879	100.1	2,956	99.3
Sex										
Male	1,257	44.1	1,227	42.4	1,251	43.0	1,250	43.4	1,292	43.7
Female	1,594	55.9	1,667	57.6	1,658	57.0	1,629	56.6	1,664	56.3
Totals	2,851	100.0	2,894	100.0	2,909	100.0	2,879	100.0	2,956	100.0

Notes: "Undergraduate" includes the classifications freshman, sophomore, junior, senior, and post-baccalaureate (but not in graduate programs). Percentage totals may not sum to 100.0% due to rounding.

Source: U. T. System Office of Health Affairs.

Student Demographics Undergraduate and Graduate Fall Enrollment

Health Science Center at San Antonio

Undergraduate

Headcount	1997	%	1998	%	1999	%	2000	%	2001	%
Ethnic Origin										
Anglo	558	60.6	498	55.0	394	53.1	381	50.0	433	50.6
African-American	54	5.9	51	5.6	48	6.5	49	6.4	57	6.7
Hispanic	231	25.1	258	28.5	246	33.2	273	35.8	317	37.1
Asian-American	63	6.8	64	7.1	42	5.7	35	4.6	37	4.3
Native American	7	0.8	7	0.8	5	0.7	5	0.7	4	0.5
Non-Resident Alien	8	0.9	27	3.0	7	0.9	19	2.5	7	0.8
Unknown or Not Reported	0	0.0	0	0.0	0	0.0	0	0.0	0	0.0
Totals	921	100.1	905	100.0	742	100.1	762	100.0	855	100.0
Sex										
Male	243	26.4	216	23.9	185	24.9	228	29.9	266	31.1
Female	678	73.6	689	76.1	557	75.1	534	70.1	589	68.9
Totals	921	100.0	905	100.0	742	100.0	762	100.0	855	100.0

Graduate

Headcount	1997	%	1998	%	1999	%	2000	%	2001	%
Ethnic Origin										
Anglo	1,155	65.3	1,156	63.8	1,220	67.2	1,165	65.4	1,184	65.4
African-American	39	2.2	41	2.3	36	2.0	34	1.9	40	2.2
Hispanic	221	12.5	256	14.1	246	13.6	269	15.1	320	17.7
Asian-American	259	14.6	227	12.5	214	11.8	184	10.3	163	9.0
Native American	13	0.7	12	0.7	11	0.6	8	0.4	7	0.4
Non-Resident Alien	81	4.6	120	6.6	88	4.8	122	6.8	96	5.3
Unknown or Not Reported	0	0.0	0	0.0	0	0.0	0	0.0	0	0.0
Totals	1,768	99.9	1,812	100.0	1,815	100.0	1,782	99.9	1,810	100.0
Sex										
Male	924	52.3	892	49.2	873	48.1	830	46.6	827	45.7
Female	844	47.7	920	50.8	942	51.9	952	53.4	983	54.3
Totals	1,768	100.0	1,812	100.0	1,815	100.0	1,782	100.0	1,810	100.0

Notes: "Undergraduate" includes the classifications freshman, sophomore, junior, senior, and post-baccalaureate (but not in graduate programs). Percentage totals may not sum to 100.0% due to rounding.

Source: U.T. System Office of Health Affairs.

Student Demographics Undergraduate and Graduate Fall Enrollment

M. D. Anderson Cancer Center

Undergraduate

Headcount	1997	%	1998	%	1999	%	2000	%	2001	%
Ethnic Origin										
Anglo	0	0	0	0	0	0	24	57.1	32	66.7
African-American	0	0	0	0	0	0	7	16.7	3	6.3
Hispanic	0	0	0	0	0	0	5	11.9	1	2.1
Asian-American	0	0	0	0	0	0	4	9.5	10	20.8
Native American	0	0	0	0	0	0	0	0.0	1	2.1
Non-Resident Alien	0	0	0	0	0	0	2	4.8	1	2.1
Unknown or Not Reported	0	0	0	0	0	0	0	0.0	0	0.0
Totals	0	0	0	0	0	0	42	100.0	48	100.1
Sex										
Male	0	0	0	0	0	0	16	38.1	18	37.5
Female	0	0	0	0	0	0	26	61.9	30	62.5
Totals:	0	0	0	0	0	0	42	100.0	48	100.0

Graduate

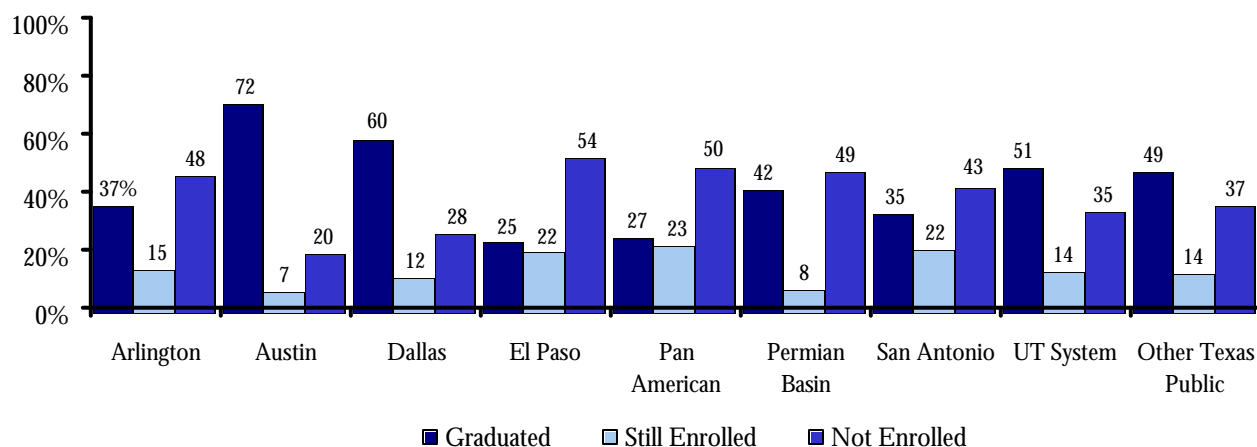
**Graduate students are expected to be enrolled for the fall semester of 2002
and will be included in reporting at that time.**

Note: Percentage totals may not sum to 100.0% due to rounding.

Source: U. T. System Office of Health Affairs.

Graduation Rates Through August 31, 2001

Students First Entering Public Higher Education As Full Time Undergraduates in Fall 1994



Institution	Graduated	Not Graduated	
		Still Enrolled	Not Enrolled
Arlington	431	172	548
Austin	4,115	421	1,164
Dallas	229	47	106
El Paso	459	400	1,001
Pan American	436	384	824
Permian Basin	45	9	52
San Antonio	495	317	621
U.T. System	6,210	1,750	4,316
Other Texas Public	13,910	3,919	10,459
Total Texas Public	20,120	5,669	14,775

Notes: U. T. Brownsville and U. T. Tyler were undergraduate upper-division (juniors and seniors) institutions in Fall 1994. “Graduated” represents students who received a baccalaureate or higher degree from the same or different Texas public institution than they entered as undergraduates in Fall 1994. “Still Enrolled” represents students who have not received a baccalaureate or higher degree but were enrolled in Fall 1999 in the same or different Texas public institution than they entered as undergraduates in Fall 1994. “Not Enrolled” represents students who have not received a baccalaureate or higher degree and were not enrolled in Fall 1999 in the same or different Texas public institution than they entered as undergraduates in Fall 1994. “First-Time Undergraduates” refers to students that have never attended college or other postsecondary institution. “Full-Time” means students enrolled in 12 or more semester credit hours.

Source: “Baccalaureate Graduation Rates - First Time Entering Freshmen, Fall 1994,” Texas Higher Education Coordinating Board.

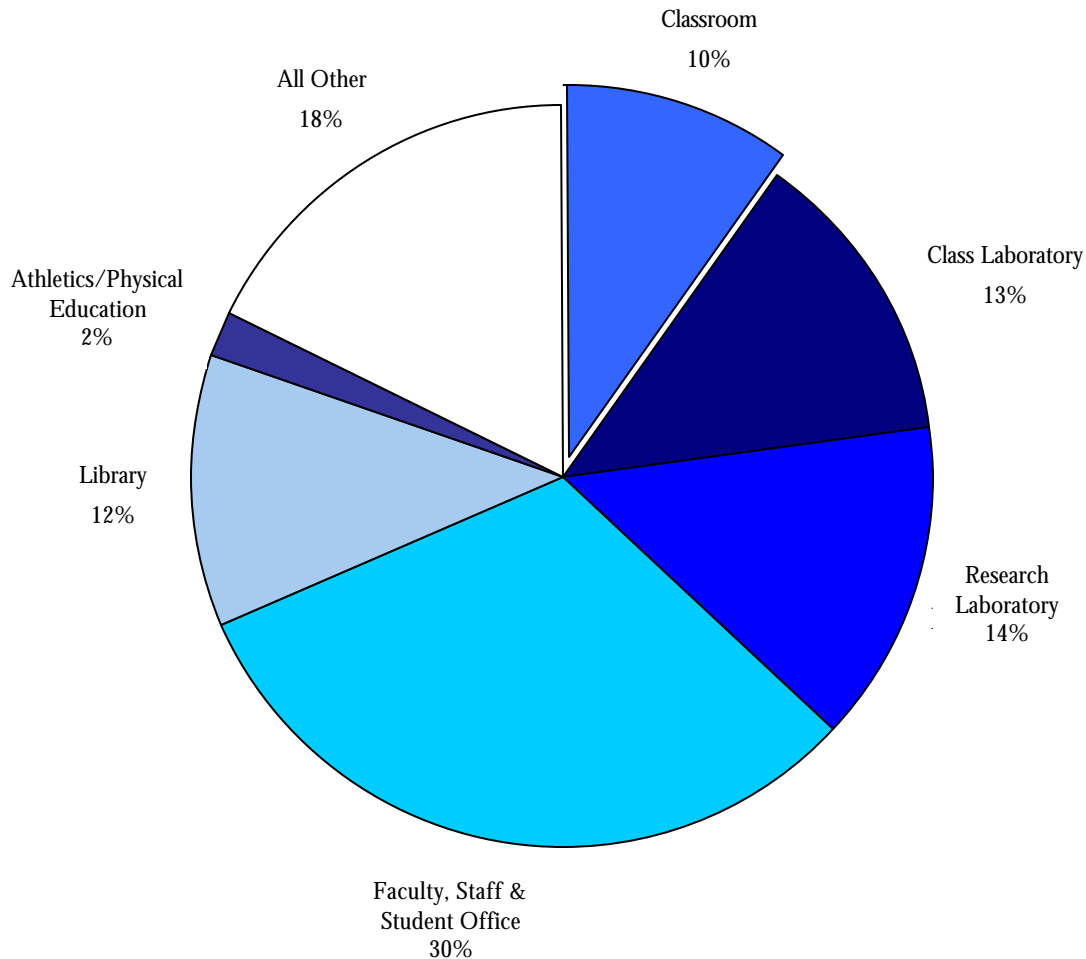
Assignable Educational and General Space Explanation

The following charts summarize the uses of building space operated and maintained from appropriated funds. Auxiliary enterprise space (e.g., dormitories and cafeterias), which is self-funded, is not included.

The charts on total educational and general spaces are based on a standard report submitted by the institutions to the Texas Higher Education Coordinating Board.

Assignable Educational and General Space

Academic Institutions



Notes: Not included in "Educational & General" space are facilities that are part of auxiliary enterprises. "All Other" includes the following categories: Currently Unusable, Special Use, General Use, Institutional Support, and Health Care Facilities.

Explanation of "All Other" Categories:

"Currently Unusable" space includes inactive areas, areas under conversion, and unfinished areas.

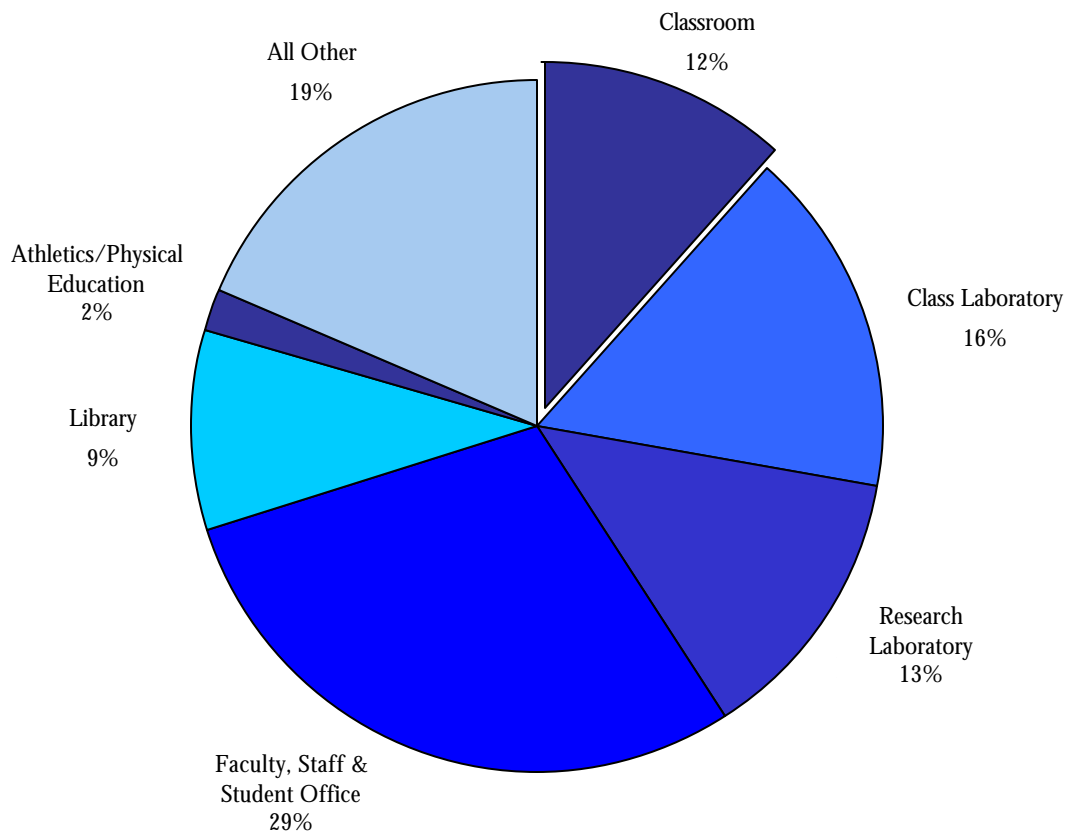
Since "Athletics/Physical Education" space is usually the largest sub-category of "Special Use" space, it is shown separately. Other types of space included in special use are armory; audio/visual, radio, TV service; demonstration facilities; animal quarters; and greenhouses. "General Use" space examples are theaters, auditoriums, concert halls, arenas, museums, art galleries, and non-class (student government, community group) meeting rooms.

"Institutional Support" space includes data processing, printing, repair and maintenance shop, central warehouse, and vehicle storage facilities. "Health Care Facilities" includes patient facilities, nurse stations, surgery and treatment facilities, service laboratories, public waiting areas, and health care service facilities.

Source: "Part E, Higher Education Facilities Inventory," Texas Higher Education Coordinating Board.

Assignable Educational and General Space

Arlington



Notes: Not included in "Educational & General" space are facilities that are part of auxiliary enterprises. "All Other" includes the following categories: Currently Unusable, Special Use, General Use, Institutional Support, and Health Care Facilities.

Explanation of "All Other" Categories:

"Currently Unusable" space includes inactive areas, areas under conversion, and unfinished areas.

Since "Athletics/Physical Education" space is usually the largest sub-category of "Special Use" space, it is shown separately.

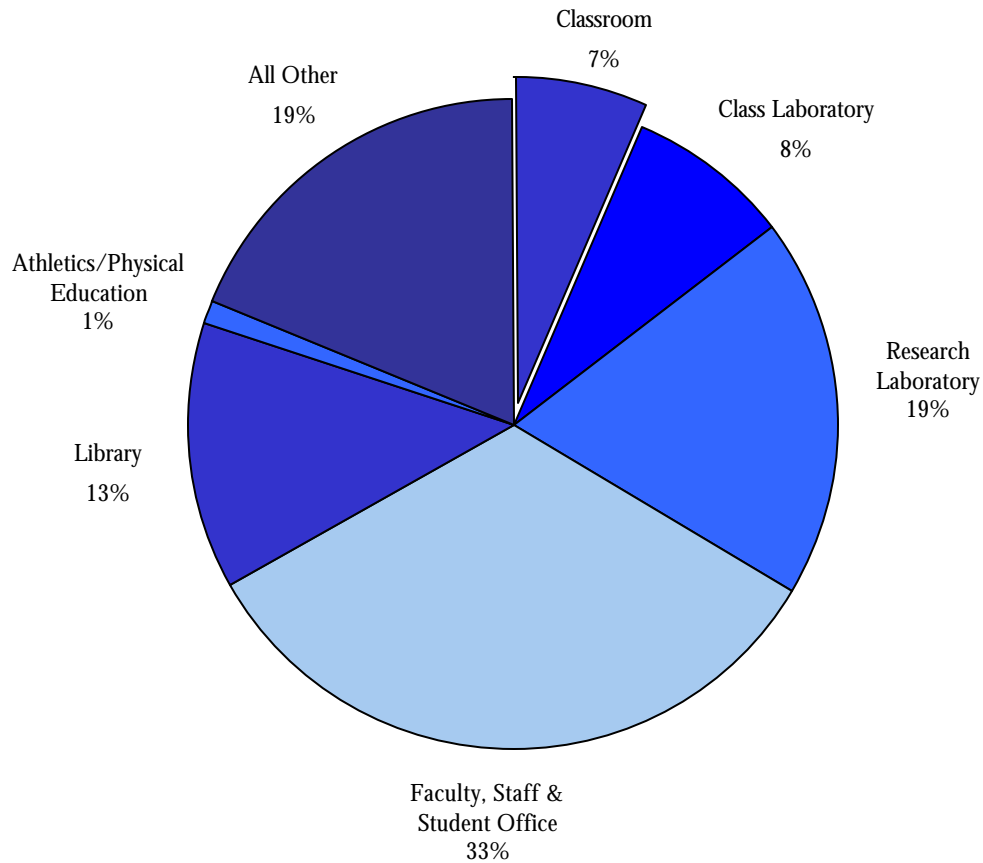
Other types of space included in special use are armory; audio/visual, radio, TV service; demonstration facilities; animal quarters; and greenhouses. "General Use" space examples are theaters, auditoriums, concert halls, arenas, museums, art galleries, and non-class (student government, community group) meeting rooms.

"Institutional Support" space includes data processing, printing, repair and maintenance shop, central warehouse, and vehicle storage facilities. "Health Care Facilities" includes patient facilities, nurse stations, surgery and treatment facilities, service laboratories, public waiting areas, and health care service facilities.

Source: "Part E, Higher Education Facilities Inventory," Texas Higher Education Coordinating Board.

Assignable Educational and General Space

Austin

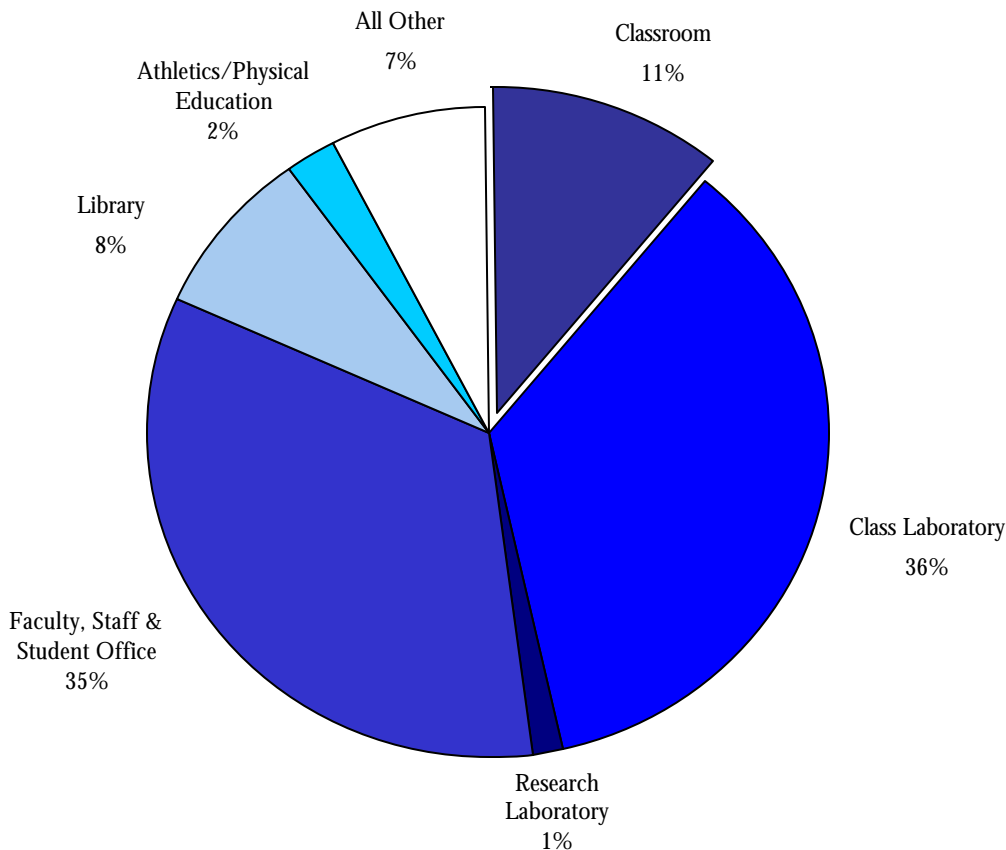


- Notes: Not included in "Educational & General" space are facilities that are part of auxiliary enterprises.
 "All Other" includes the following categories: Currently Unusable, Special Use, General Use, Institutional Support, and Health Care Facilities.
 Explanation of "All Other" Categories:
 "Currently Unusable" space includes inactive areas, areas under conversion, and unfinished areas.
 Since "Athletics/Physical Education" space is usually the largest sub-category of "Special Use" space, it is shown separately.
 Other types of space included in special use are armory; audio/visual, radio, TV service; demonstration facilities; animal quarters; and greenhouses. "General Use" space examples are theaters, auditoriums, concert halls, arenas, museums, art galleries, and non-class (student government, community group) meeting rooms.
 "Institutional Support" space includes data processing, printing, repair and maintenance shop, central warehouse, and vehicle storage facilities. "Health Care Facilities" includes patient facilities, nurse stations, surgery and treatment facilities, service laboratories, public waiting areas, and health care service facilities.

Source: "Part E, Higher Education Facilities Inventory," Texas Higher Education Coordinating Board.

Assignable Educational and General Space

Brownsville



Notes: Not included in "Educational & General" space are facilities that are part of auxiliary enterprises. "All Other" includes the following categories: Currently Unusable, Special Use, General Use, Institutional Support, and Health Care Facilities.

Explanation of "All Other" Categories:

"Currently Unusable" space includes inactive areas, areas under conversion, and unfinished areas.

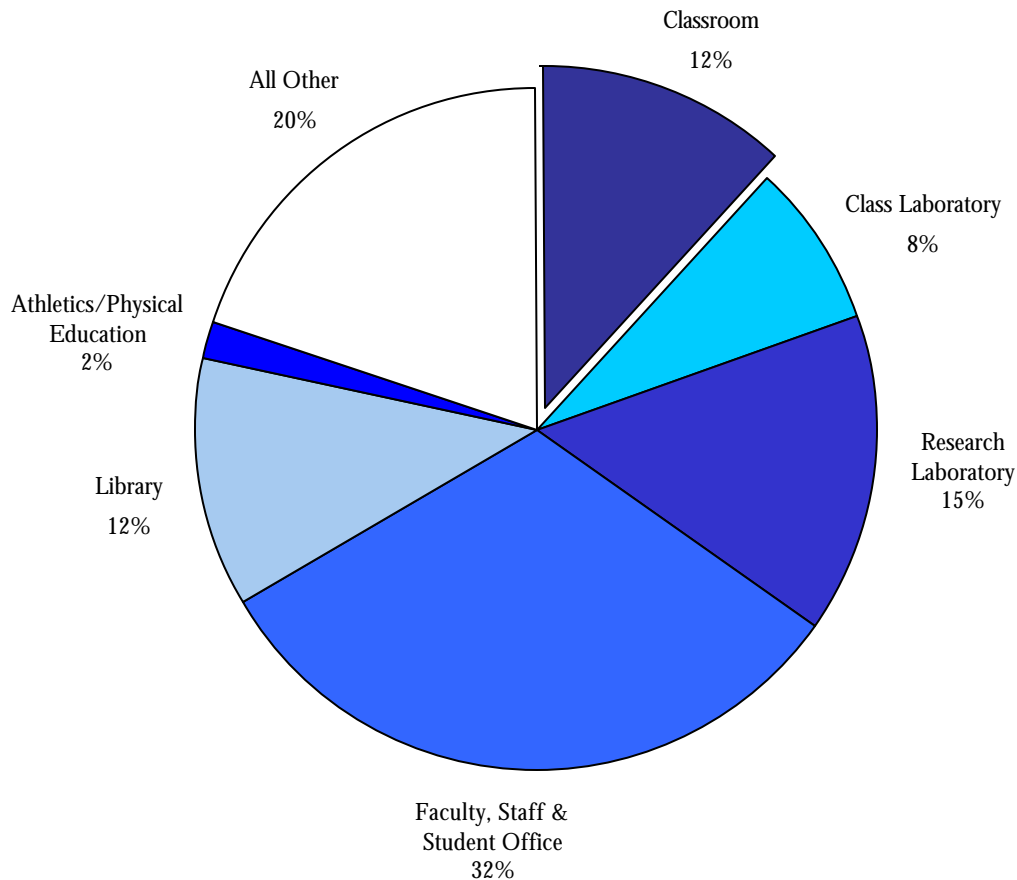
Since "Athletics/Physical Education" space is usually the largest sub-category of "Special Use" space, it is shown separately. Other types of space included in special use are armory; audio/visual, radio, TV service; demonstration facilities; animal quarters; and greenhouses. "General Use" space examples are theaters, auditoriums, concert halls, arenas, museums, art galleries, and non-class (student government, community group) meeting rooms.

"Institutional Support" space includes data processing, printing, repair and maintenance shop, central warehouse, and vehicle storage facilities. "Health Care Facilities" includes patient facilities, nurse stations, surgery and treatment facilities, service laboratories, public waiting areas, and health care service facilities.

Source: "Part E, Higher Education Facilities Inventory," Texas Higher Education Coordinating Board.

Assignable Educational and General Space

Dallas



Notes: Not included in "Educational & General" space are facilities that are part of auxiliary enterprises. "All Other" includes the following categories: Currently Unusable, Special Use, General Use, Institutional Support, and Health Care Facilities.

Explanation of "All Other" Categories:

"Currently Unusable" space includes inactive areas, areas under conversion, and unfinished areas.

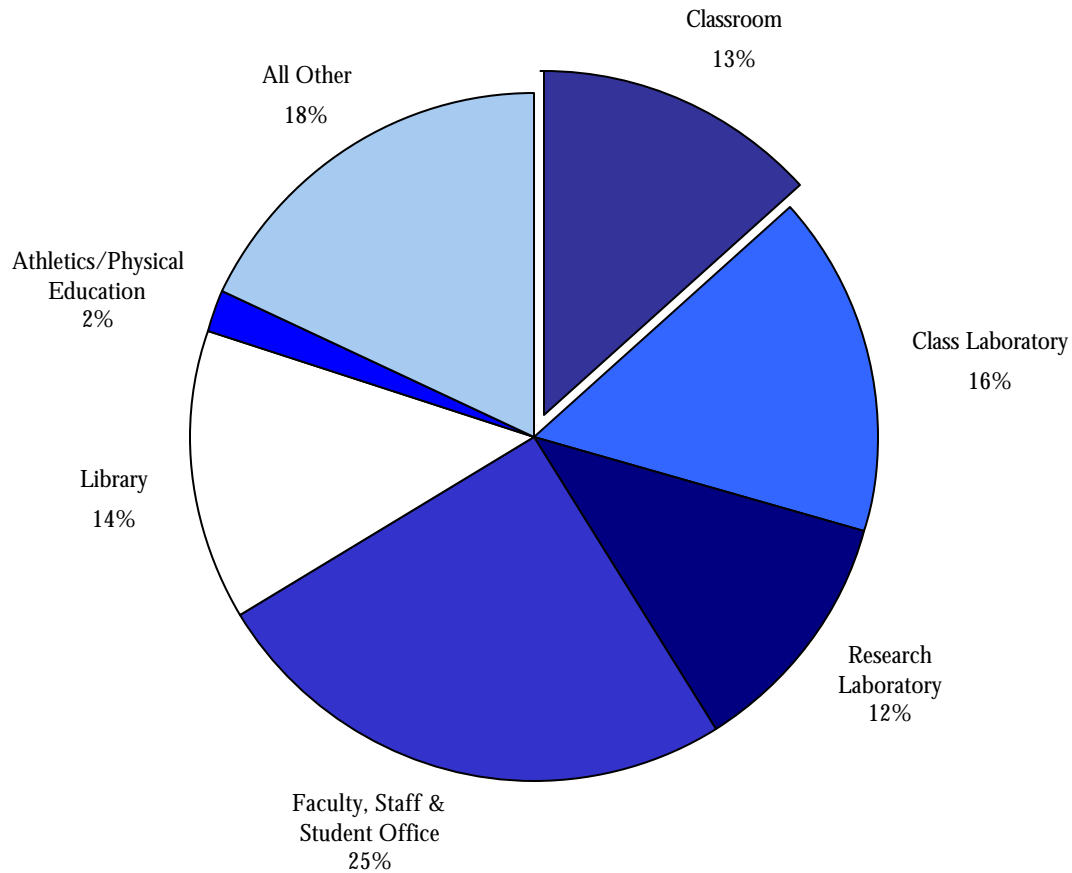
Since "Athletics/Physical Education" space is usually the largest sub-category of "Special Use" space, it is shown separately. Other types of space included in special use are armory; audio/visual, radio, TV service; demonstration facilities; animal quarters; and greenhouses. "General Use" space examples are theaters, auditoriums, concert halls, arenas, museums, art galleries, and non-class (student government, community group) meeting rooms.

"Institutional Support" space includes data processing, printing, repair and maintenance shop, central warehouse, and vehicle storage facilities. "Health Care Facilities" includes patient facilities, nurse stations, surgery and treatment facilities, service laboratories, public waiting areas, and health care service facilities.

Source: "Part E, Higher Education Facilities Inventory," Texas Higher Education Coordinating Board.

Assignable Educational and General Space

El Paso



Notes: Not included in "Educational & General" space are facilities that are part of auxiliary enterprises. "All Other" includes the following categories: Currently Unusable, Special Use, General Use, Institutional Support, and Health Care Facilities.

Explanation of "All Other" Categories:

"Currently Unusable" space includes inactive areas, areas under conversion, and unfinished areas.

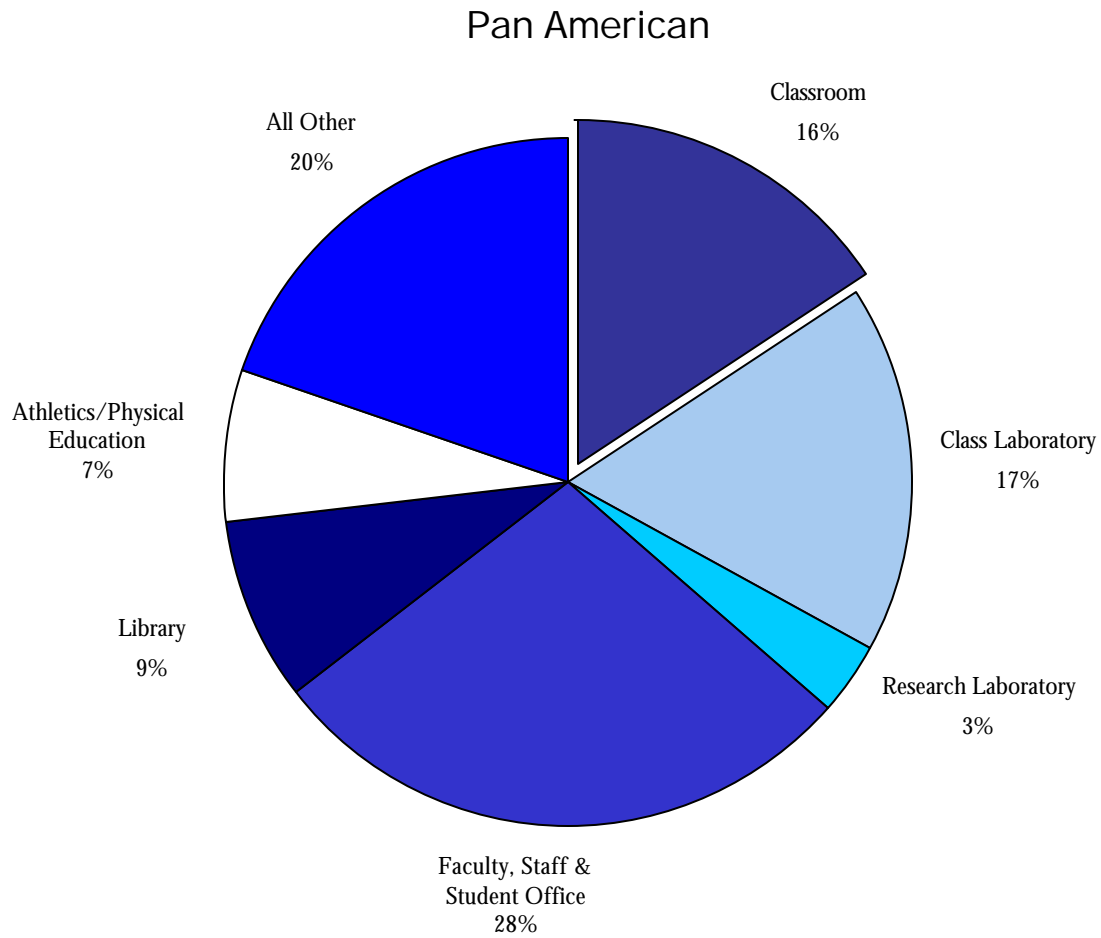
Since "Athletics/Physical Education" space is usually the largest sub-category of "Special Use" space, it is shown separately.

Other types of space included in special use are armory; audio/visual, radio, TV service; demonstration facilities; animal quarters; and greenhouses. "General Use" space examples are theaters, auditoriums, concert halls, arenas, museums, art galleries, and non-class (student government, community group) meeting rooms.

"Institutional Support" space includes data processing, printing, repair and maintenance shop, central warehouse, and vehicle storage facilities. "Health Care Facilities" includes patient facilities, nurse stations, surgery and treatment facilities, service laboratories, public waiting areas, and health care service facilities.

Source: "Part E, Higher Education Facilities Inventory," Texas Higher Education Coordinating Board

Assignable Educational and General Space

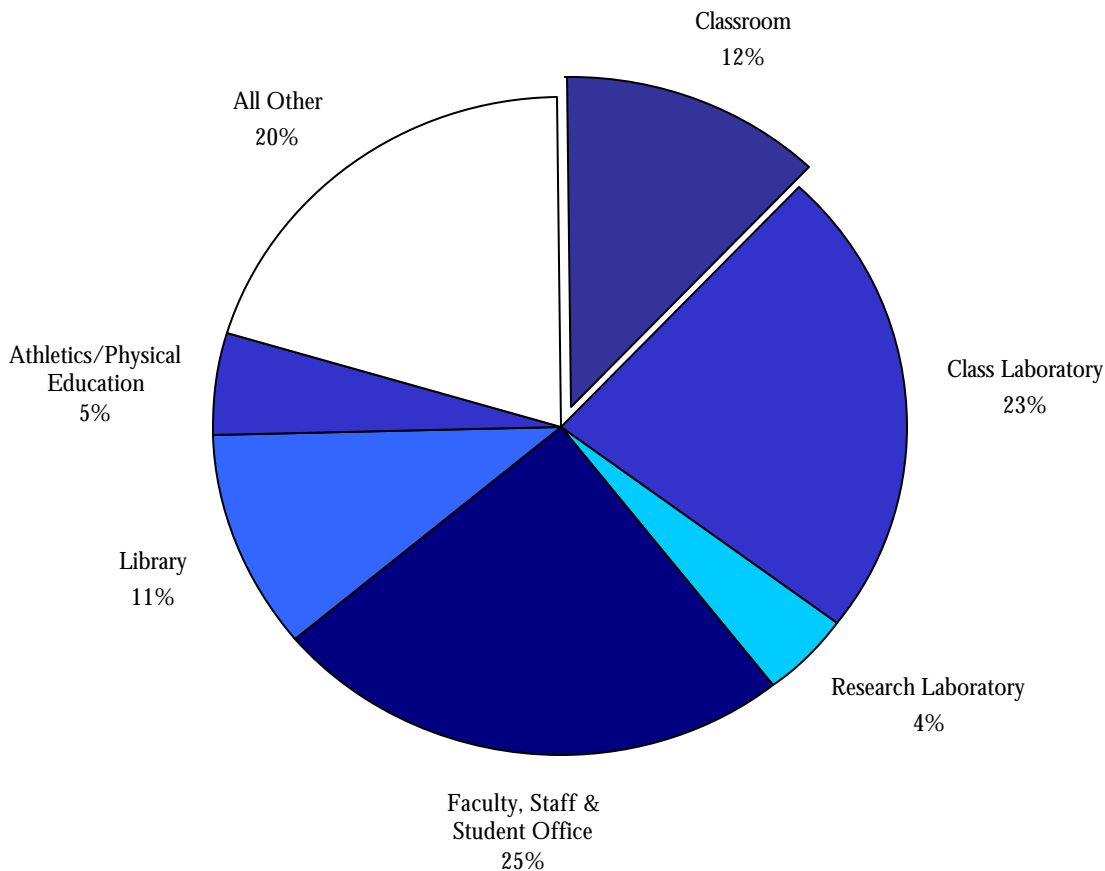


Notes: Not included in "Educational & General" space are facilities that are part of auxiliary enterprises.
 "All Other" includes the following categories: Currently Unusable, Special Use, General Use, Institutional Support, and Health Care Facilities.
 Explanation of "All Other" Categories:
 "Currently Unusable" space includes inactive areas, areas under conversion, and unfinished areas.
 Since "Athletics/Physical Education" space is usually the largest sub-category of "Special Use" space, it is shown separately.
 Other types of space included in special use are armory; audio/visual, radio, TV service; demonstration facilities; animal quarters; and greenhouses. "General Use" space examples are theaters, auditoriums, concert halls, arenas, museums, art galleries, and non-class (student government, community group) meeting rooms.
 "Institutional Support" space includes data processing, printing, repair and maintenance shop, central warehouse, and vehicle storage facilities. "Health Care Facilities" includes patient facilities, nurse stations, surgery and treatment facilities, service laboratories, public waiting areas, and health care service facilities.

Source: "Part E, Higher Education Facilities Inventory," Texas Higher Education Coordinating Board.

Assignable Educational and General Space

Permian Basin

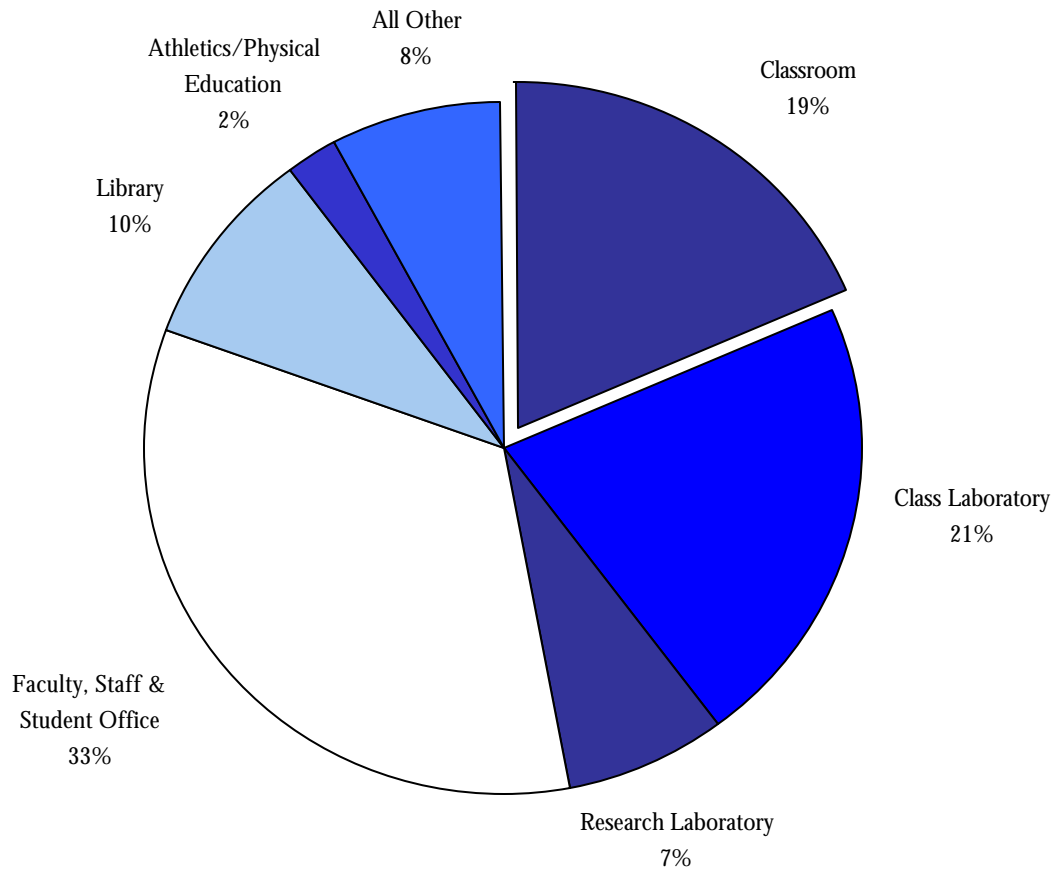


Notes: Not included in "Educational & General" space are facilities that are part of auxiliary enterprises.
 "All Other" includes the following categories: Currently Unusable, Special Use, General Use, Institutional Support, and Health Care Facilities.
 Explanation of "All Other" Categories:
 "Currently Unusable" space includes inactive areas, areas under conversion, and unfinished areas.
 Since "Athletics/Physical Education" space is usually the largest sub-category of "Special Use" space, it is shown separately.
 Other types of space included in special use are armory; audio/visual, radio, TV service; demonstration facilities; animal quarters; and greenhouses.
 "General Use" space examples are theaters, auditoriums, concert halls, arenas, museums, art galleries, and non-class (student government, community group) meeting rooms.
 "Institutional Support" space includes data processing, printing, repair and maintenance shop, central warehouse, and vehicle storage facilities. "Health Care Facilities" includes patient facilities, nurse stations, surgery and treatment facilities, service laboratories, public waiting areas, and health care service facilities.

Source: "Part E, Higher Education Facilities Inventory," Texas Higher Education Coordinating Board.

Assignable Educational and General Space

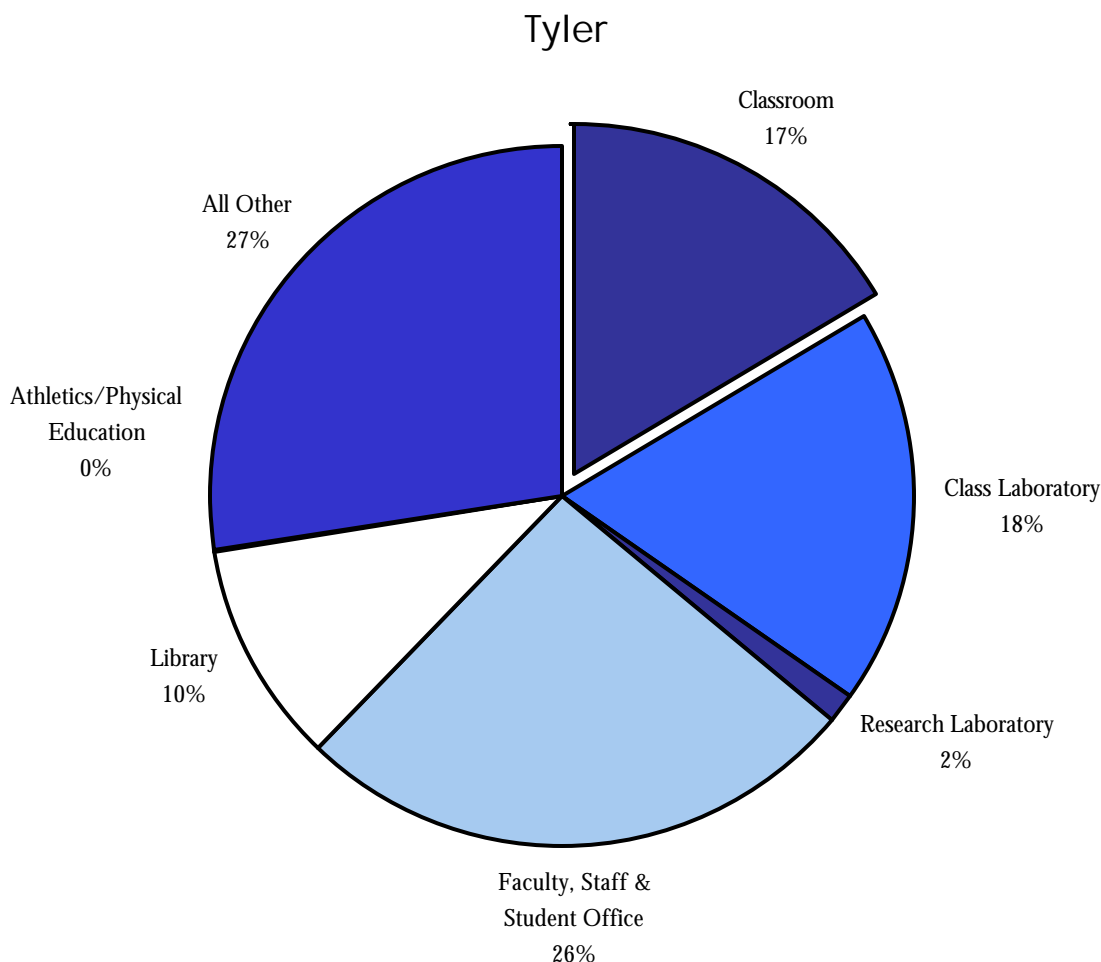
San Antonio



- Notes: Not included in "Educational & General" space are facilities that are part of auxiliary enterprises. "All Other" includes the following categories: Currently Unusable, Special Use, General Use, Institutional Support, and Health Care Facilities.
- Explanation of "All Other" Categories:
- "Currently Unusable" space includes inactive areas, areas under conversion, and unfinished areas.
 - Since "Athletics/Physical Education" space is usually the largest sub-category of "Special Use" space, it is shown separately. Other types of space included in special use are armory; audio/visual, radio, TV service; demonstration facilities; animal quarters; and greenhouses.
 - "General Use" space examples are theaters, auditoriums, concert halls, arenas, museums, art galleries, and non-class (student government, community group) meeting rooms.
 - "Institutional Support" space includes data processing, printing, repair and maintenance shop, central warehouse, and vehicle storage facilities. "Health Care Facilities" includes patient facilities, nurse stations, surgery and treatment facilities, service laboratories, public waiting areas, and health care service facilities.

Source: "Part E, Higher Education Facilities Inventory," Texas Higher Education Coordinating Board.

Assignable Educational and General Space



Notes: Not included in "Educational & General" space are facilities that are part of auxiliary enterprises. "All Other" includes the following categories: Currently Unusable, Special Use, General Use, Institutional Support, and Health Care Facilities.

Explanation of "All Other" Categories:

"Currently Unusable" space includes inactive areas, areas under conversion, and unfinished areas.

Since "Athletics/Physical Education" space is usually the largest sub-category of "Special Use" space, it is shown separately.

Other types of space included in special use are armory; audio/visual, radio, TV service; demonstration facilities; animal quarters; and greenhouses. "General Use" space examples are theaters, auditoriums, concert halls, arenas, museums, art galleries, and non-class (student government, community group) meeting rooms.

"Institutional Support" space includes data processing, printing, repair and maintenance shop, central warehouse, and vehicle storage facilities. "Health Care Facilities" includes patient facilities, nurse stations, surgery and treatment facilities, service laboratories, public waiting areas, and health care service facilities.

Source: "Part E, Higher Education Facilities Inventory," Texas Higher Education Coordinating Board.