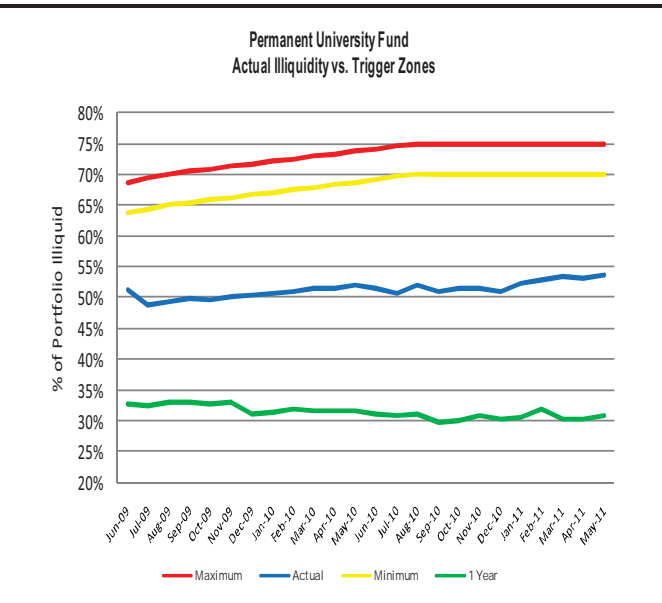
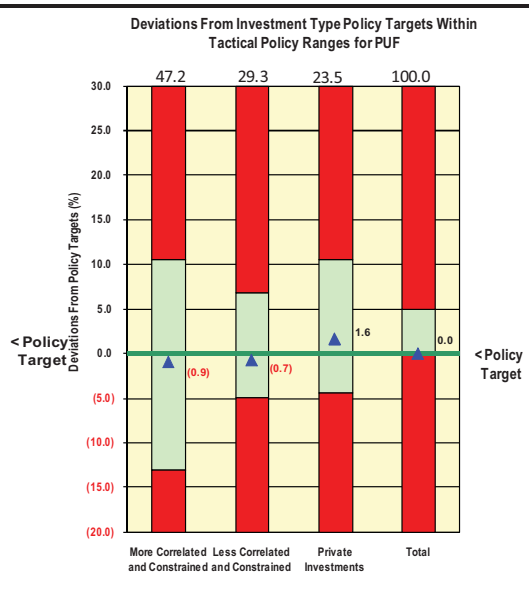
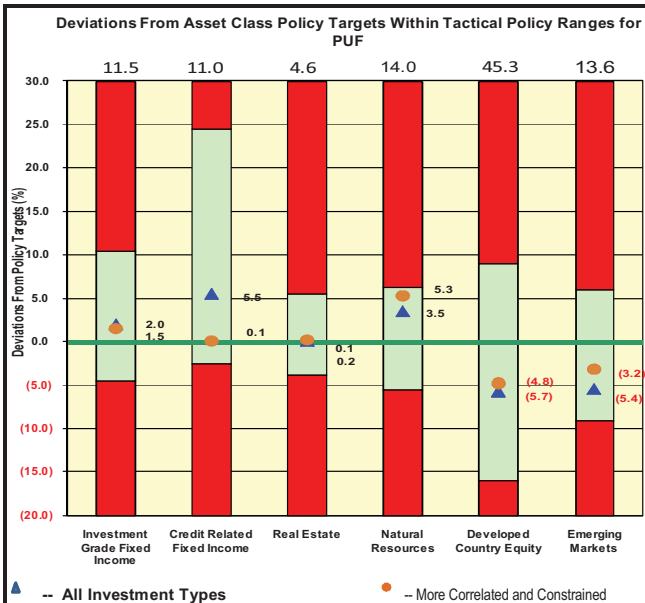


I. PERMANENT UNIVERSITY FUND
Investment Reports for Periods Ended May 31, 2011

Prepared in accordance with Texas Education Code Sec. 51.0032

Summary of Capital Flows			
(\$ millions)	Fiscal Year Ended August 31, 2010	Quarter Ended May 31, 2011	Fiscal Year to Date May 31, 2011
Beginning Net Assets	\$ 9,674	\$ 12,339	\$ 10,725
PUF Lands Receipts	338	370	763
Investment Return (Net of Expenses)	1,229	452	1,926
Distributions to AUF	(516)	(253)	(506)
Ending Net Assets	\$ 10,725	\$ 12,908	\$ 12,908

	Fiscal Year to Date				
	Returns		Value Added		
	Portfolio	Policy Benchmark	From Asset Allocation	From Security Selection	Total
More Correlated and Constrained:					
Investment Grade	2.99%	5.33%	-0.53%	-0.20%	-0.73%
Credit-Related	17.16%	13.29%	-0.04%	0.00%	-0.04%
Real Estate	25.45%	25.45%	-0.03%	0.02%	-0.01%
Natural Resources	31.33%	33.36%	0.54%	-0.11%	0.43%
Developed Country	30.32%	27.42%	-0.79%	0.49%	-0.30%
Emerging Markets	20.01%	22.19%	-0.20%	-0.27%	-0.47%
Total More Correlated and Constrained	20.77%	23.10%	-1.05%	-0.07%	-1.12%
Less Correlated and Constrained	11.49%	7.02%	0.18%	1.24%	1.42%
Private Investments	19.89%	13.26%	-0.34%	1.74%	1.40%
Total	17.80%	16.10%	-1.21%	2.91%	1.70%



II. GENERAL ENDOWMENT FUND

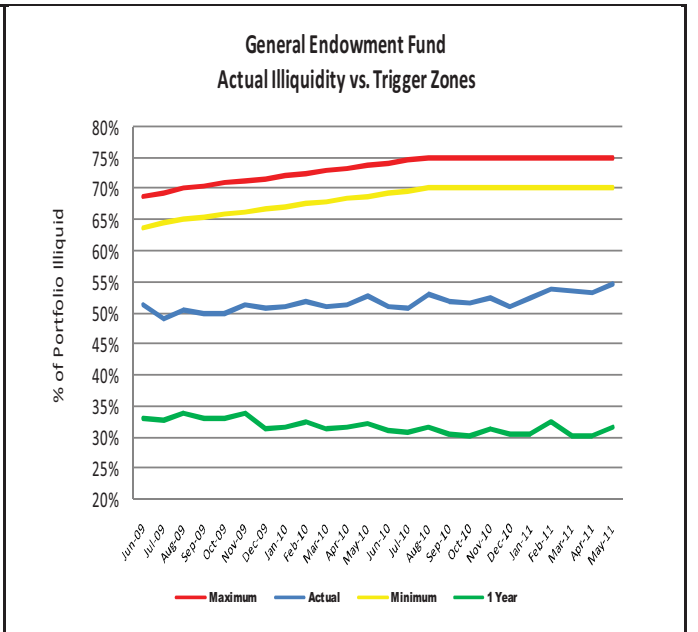
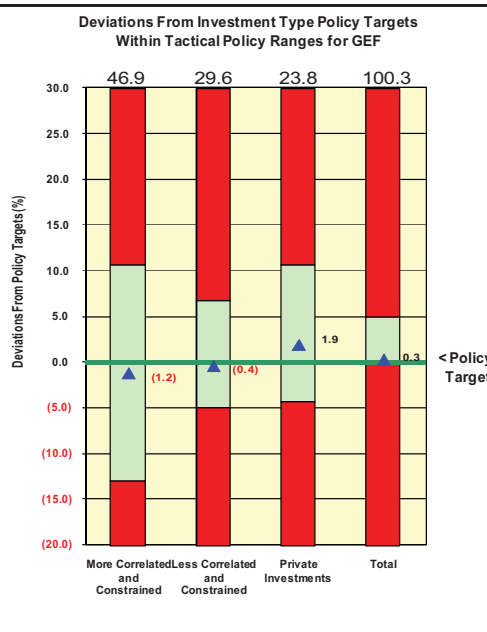
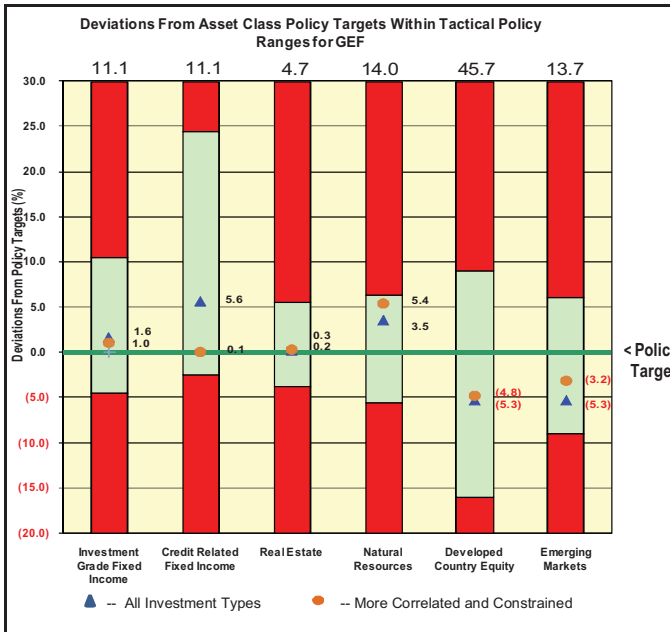
Investment Reports for Periods Ended May 31, 2011

Prepared in accordance with Texas Education Code Sec. 51.0032

Summary of Capital Flows			
(\$ millions)	Fiscal Year Ended August 31, 2010	Quarter Ended May 31, 2011	Fiscal Year to Date May 31, 2011
Beginning Net Assets	\$ 5,359	\$ 6,977	\$ 6,035
Contributions	285	134	391
Withdrawals	(11)	(1)	(7)
Distributions	(298)	(83)	(244)
Investment Return (Net of Expenses)	700	264	1,116
Ending Net Assets	\$ 6,035	\$ 7,291	\$ 7,291

	Returns		Fiscal Year to Date		
	Portfolio	Policy Benchmark	From Asset Allocation	From Security Selection	Total
More Correlated and Constrained:					
Investment Grade	3.73%	5.33%	-0.54%	-0.15%	-0.69%
Credit-Related	17.25%	13.29%	-0.03%	0.00%	-0.03%
Real Estate	25.42%	25.45%	-0.04%	0.01%	-0.03%
Natural Resources	31.35%	33.36%	0.53%	-0.09%	0.44%
Developed Country	30.58%	27.42%	-0.83%	0.56%	-0.27%
Emerging Markets	20.09%	22.19%	-0.22%	-0.28%	-0.50%
Total More Correlated and Constrained	20.96%	23.10%	-1.13%	0.05%	-1.08%
Less Correlated and Constrained	11.49%	7.02%	0.19%	1.28%	1.47%
Private Investments	19.90%	13.26%	-0.34%	1.74%	1.40%
Total	17.89%	16.10%	-1.28%	3.07%	1.79%

119



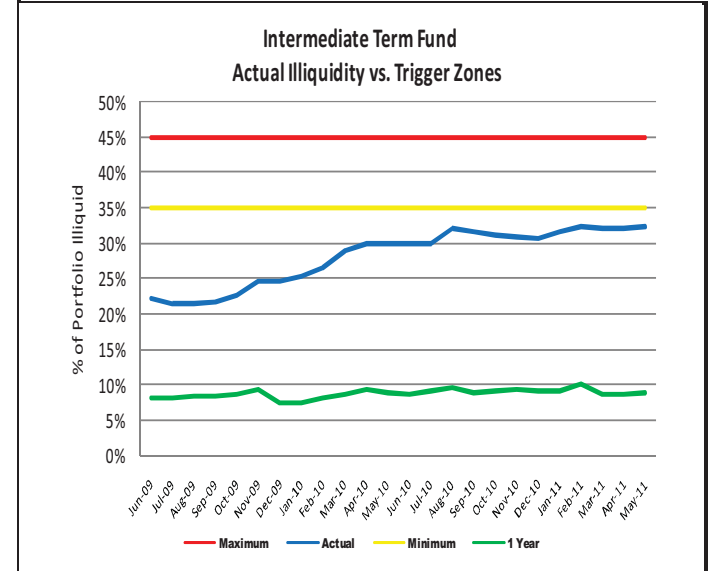
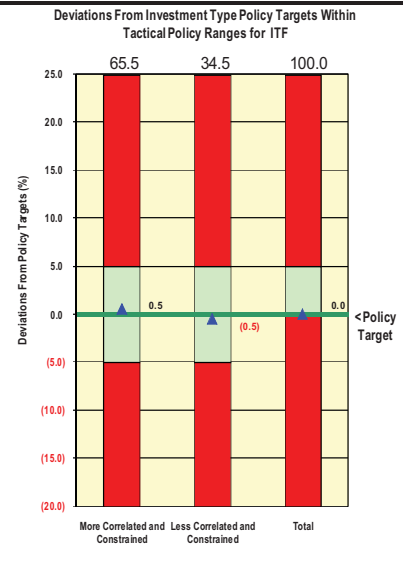
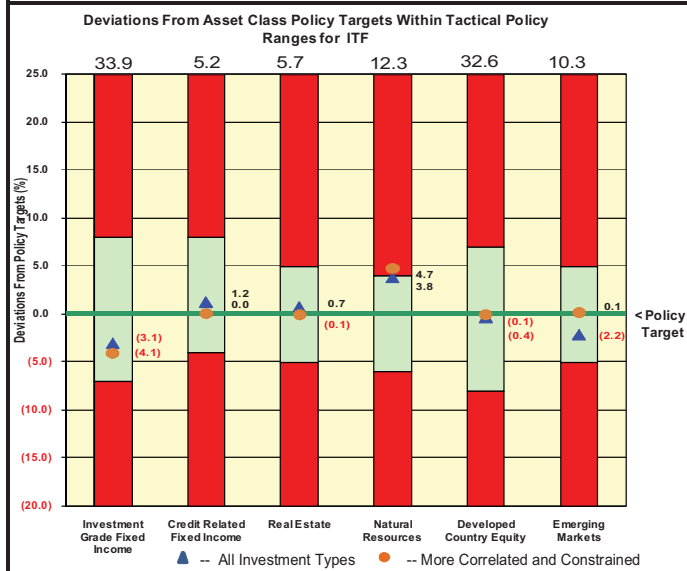
III. INTERMEDIATE TERM FUND Investment Reports for Periods Ended May 31, 2011

Prepared in accordance with Texas Education Code Sec. 51.0032

Summary of Capital Flows			
(\$ millions)	Fiscal Year Ended August 31, 2010	Quarter Ended May 31, 2011	Fiscal Year to Date May 31, 2011
Beginning Net Assets	\$ 3,572	\$ 4,710	\$ 4,156
Contributions	409	84	283
Withdrawals	(112)	(35)	(74)
Distributions	(119)	(36)	(103)
Investment Return (Net of Expenses)	406	132	593
Ending Net Assets	\$ 4,156	\$ 4,855	\$ 4,855

	Fiscal Year to Date				
	Returns		Value Added		
	Portfolio	Policy Benchmark	From Asset Allocation	From Security Selection	Total
More Correlated and Constrained:					
Investment Grade	5.07%	5.33%	0.09%	-0.10%	-0.01%
Credit-Related	18.13%	13.29%	0.00%	0.00%	0.00%
Real Estate	25.35%	25.45%	-0.04%	-0.01%	-0.05%
Natural Resources	30.07%	33.36%	0.36%	-0.21%	0.15%
Developed Country	29.32%	27.42%	0.04%	0.16%	0.20%
Emerging Markets	20.04%	22.19%	-0.02%	-0.17%	-0.19%
Total More Correlated and Constrained	15.27%	15.15%	0.43%	-0.33%	0.10%
Less Correlated and Constrained					
	11.49%	7.02%	0.19%	1.41%	1.60%
Private Investments					
	0.00%	0.00%	0.00%	0.00%	0.00%
Total	13.96%	12.26%	0.62%	1.08%	1.70%

120



IV. SEPARATELY INVESTED ASSETS
Summary Investment Report at May 31, 2011
 Report prepared in accordance with *Texas Education Code Sec. 51.0032*

ASSET TYPES	(\$ thousands)															
	FUND TYPE															
	CURRENT PURPOSE DESIGNATED		RESTRICTED		ENDOWMENT & SIMILAR FUNDS		ANNUITY & LIFE INCOME FUNDS		AGENCY FUNDS		TOTAL EXCLUDING OPERATING FUNDS		OPERATING FUNDS (DEBT PROCEEDS AND (SHORT TERM FUND))		TOTAL	
	BOOK	MARKET	BOOK	MARKET	BOOK	MARKET	BOOK	MARKET	BOOK	MARKET	BOOK	MARKET	BOOK	MARKET	BOOK	MARKET
Cash & Equivalents:																
Beginning value 02/28/11	-	-	2,975	2,975	36,771	36,771	2,578	2,578	100,109	100,109	142,433	142,433	2,374,408	2,374,408	2,516,841	2,516,841
Increase/(Decrease)	-	-	(881)	(881)	(9,427)	(9,427)	(1,171)	(1,171)	(83,204)	(83,204)	(94,683)	(94,683)	(125,050)	(125,050)	(219,733)	(219,733)
Ending value 05/31/11	-	-	2,094	2,094	27,344	27,344	1,407	1,407	16,905	16,905	47,750	47,750	2,249,358	2,249,358	2,297,108	2,297,108
Debt Securities:																
Beginning value 02/28/11	-	-	101	101	11,180	11,906	11,255	11,573	-	-	22,536	23,580	-	-	22,536	23,580
Increase/(Decrease)	-	-	-	-	420	594	676	866	51	51	1,147	1,511	49,841	49,831	50,988	51,342
Ending value 05/31/11	-	-	101	101	11,600	12,500	11,931	12,439	51	51	23,683	25,091	49,841	49,831	73,524	74,922
Equity Securities:																
Beginning value 02/28/11	147	4,205	877	848	30,145	34,334	13,938	14,515	-	-	45,107	53,902	-	-	45,107	53,902
Increase/(Decrease)	-	(1,242)	(634)	(630)	355	1,148	(1,205)	(918)	-	-	(1,484)	(1,642)	-	-	(1,484)	(1,642)
Ending value 05/31/11	147	2,963	243	218	30,500	35,482	12,733	13,597	-	-	43,623	52,260	-	-	43,623	52,260
Other:																
Beginning value 02/28/11	-	-	(11)	(11)	11	11	402	139	4,553	4,553	4,955	4,692	-	-	4,955	4,692
Increase/(Decrease)	-	-	228	228	386	386	29	17	(3,893)	(3,893)	(3,250)	(3,262)	-	-	(3,250)	(3,262)
Ending value 05/31/11	-	-	217	217	397	397	431	156	660	660	1,705	1,430	-	-	1,705	1,430
Total Assets:																
Beginning value 02/28/11	147	4,205	3,942	3,913	78,107	83,022	28,173	28,805	104,662	104,662	215,031	224,607	2,374,408	2,374,408	2,589,439	2,599,015
Increase/(Decrease)	-	(1,242)	(1,287)	(1,283)	(8,266)	(7,299)	(1,671)	(1,206)	(87,046)	(87,046)	(98,270)	(98,076)	(75,209)	(75,219)	(173,479)	(173,295)
Ending value 05/31/11	147	2,963	2,655	2,630	69,841	75,723	26,502	27,599	17,616	17,616	116,761	126,531	2,299,199	2,299,189	2,415,960	2,425,720

Details of individual assets by account furnished upon request.