

I. PERMANENT UNIVERSITY FUND

Investment Reports for Periods Ended February 28, 2010

Prepared in accordance with Texas Education Code Sec. 51.0032

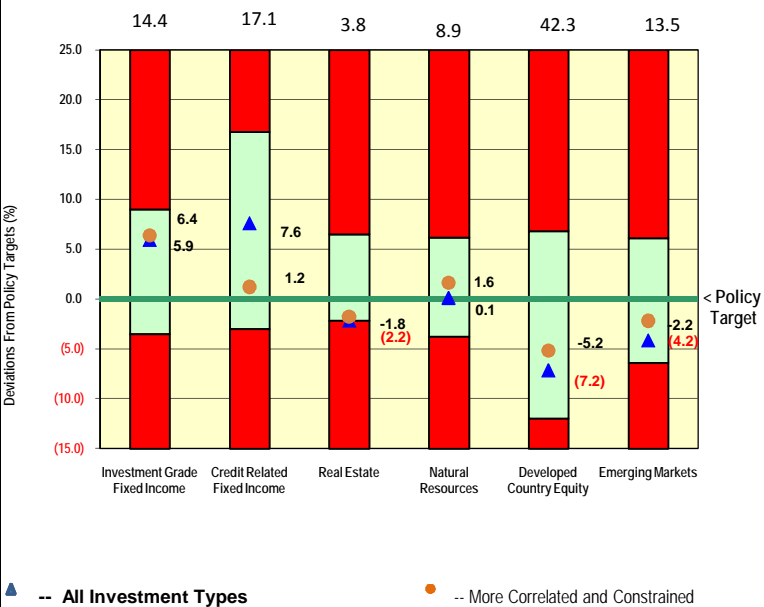
Summary of Capital Flows

(\$ millions)	Fiscal Year Ended August 31, 2009	Quarter Ended February 28, 2010	Fiscal Year to Date February 28, 2010
Beginning Net Assets	\$ 11,360	\$ 10,341	\$ 9,674
PUF Lands Receipts	340	71	144
Investment Return (Net of Expenses)	(1,495)	187	910
Distributions to AUF	(531)	(129)	(258)
Ending Net Assets	<u>\$ 9,674</u>	<u>\$ 10,470</u>	<u>\$ 10,470</u>

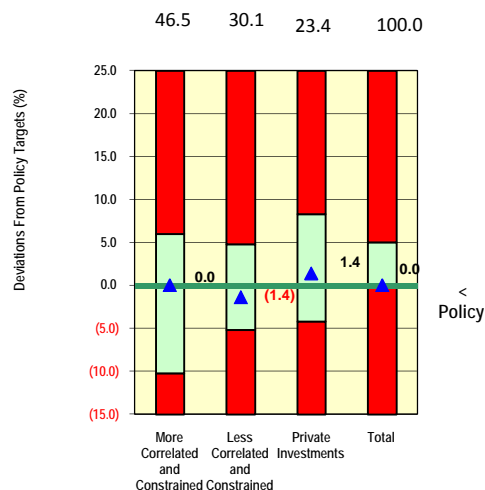
Fiscal Year to Date

	Returns		Value Added		
	Portfolio	Policy Benchmark	From Asset Allocation	From Security Selection	Total
More Correlated and Constrained:					
Investment Grade	3.02%	1.76%	-0.16%	0.10%	-0.06%
Credit-Related	21.86%	12.79%	0.23%	0.05%	0.28%
Real Estate	7.30%	7.11%	-0.02%	0.02%	0.00%
Natural Resources	12.10%	7.25%	0.05%	0.28%	0.33%
Developed Country	7.92%	5.21%	-0.09%	0.49%	0.40%
Emerging Markets	11.64%	12.19%	-0.03%	-0.08%	-0.11%
Total More Correlated and Constrained	8.60%	7.01%	-0.02%	0.86%	0.84%
Less Correlated and Constrained	9.72%	3.30%	0.12%	1.83%	1.95%
Private Investments	11.47%	10.01%	0.26%	0.07%	0.33%
Total	9.57%	6.45%	0.36%	2.76%	3.12%

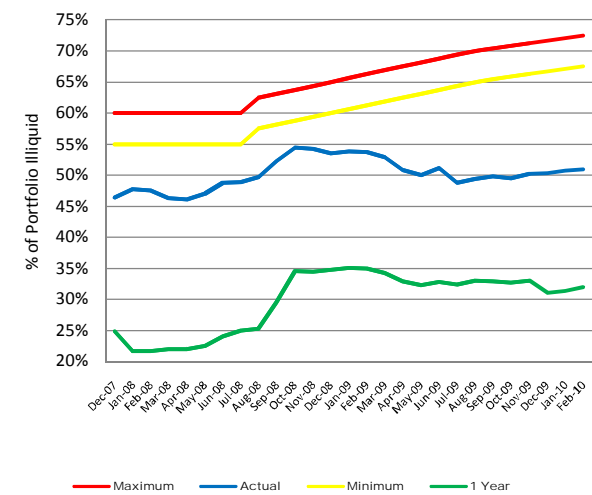
Deviations From Asset Class Policy Targets Within Tactical Policy Ranges for PUF



Deviations From Investment Type Policy Targets Within Tactical Policy Ranges for PUF



Permanent University Fund
Actual Illiquidity vs. Trigger Zones

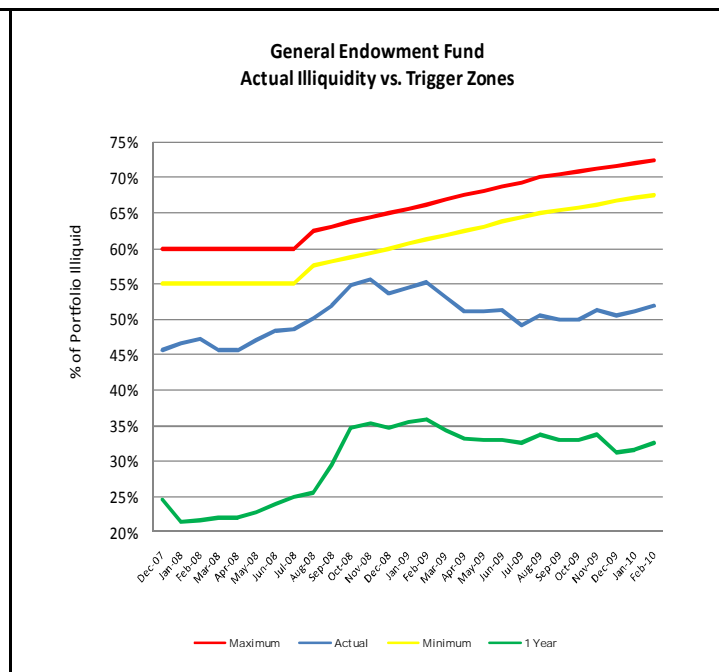
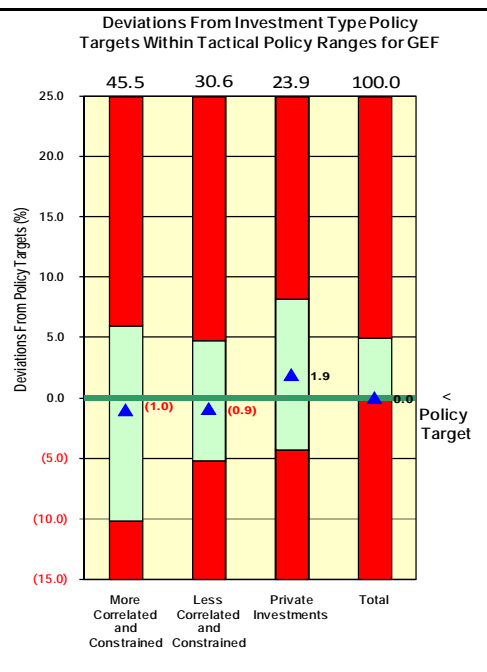
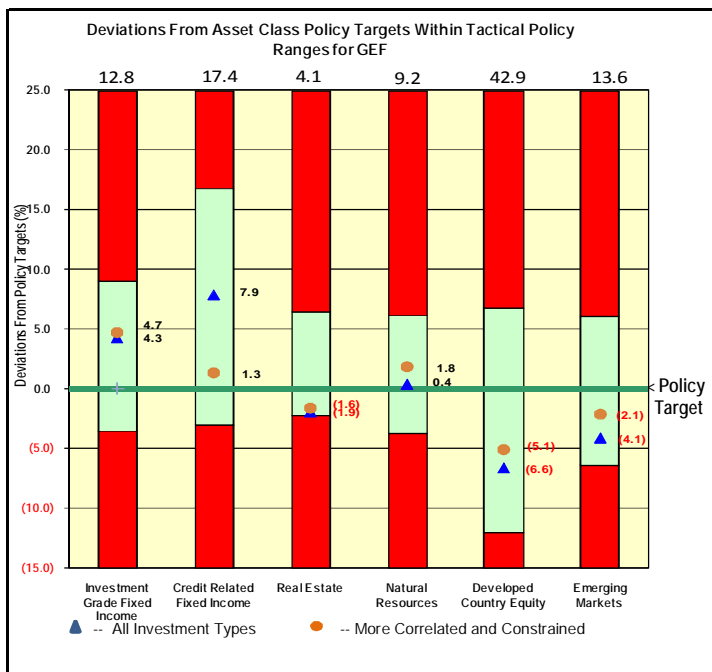


II. GENERAL ENDOWMENT FUND Investment Reports for Periods Ended February 28, 2010

Prepared in accordance with *Texas Education Code Sec. 51.0032*

Summary of Capital Flows			
(\$ millions)	Fiscal Year Ended August 31, 2009	Quarter Ended February 28, 2010	Fiscal Year to Date February 28, 2010
Beginning Net Assets	\$ 6,310	\$ 5,726	\$ 5,359
Contributions	185	36	70
Withdrawals	(11)	(2)	(2)
Distributions	(279)	(74)	(147)
Investment Return (Net of Expenses)	(846)	108	514
Ending Net Assets	<u>\$ 5,359</u>	<u>\$ 5,794</u>	<u>\$ 5,794</u>

	Returns		Fiscal Year to Date		
	Portfolio	Policy Benchmark	From Asset Allocation	From Security Selection	Total
More Correlated and Constrained:					
Investment Grade	2.98%	1.76%	-0.17%	0.09%	-0.08%
Credit-Related	21.85%	12.79%	0.23%	0.05%	0.28%
Real Estate	7.39%	7.11%	0.00%	0.01%	0.01%
Natural Resources	12.03%	7.25%	0.04%	0.26%	0.30%
Developed Country	7.85%	5.21%	-0.08%	0.49%	0.41%
Emerging Markets	11.40%	12.19%	-0.05%	-0.09%	-0.14%
Total More Correlated and Constrained	8.54%	7.01%	-0.03%	0.81%	0.78%
Less Correlated and Constrained	9.72%	3.30%	0.14%	1.87%	2.01%
Private Investments	11.47%	10.01%	0.25%	0.07%	0.32%
Total	9.56%	6.45%	0.36%	2.75%	3.11%

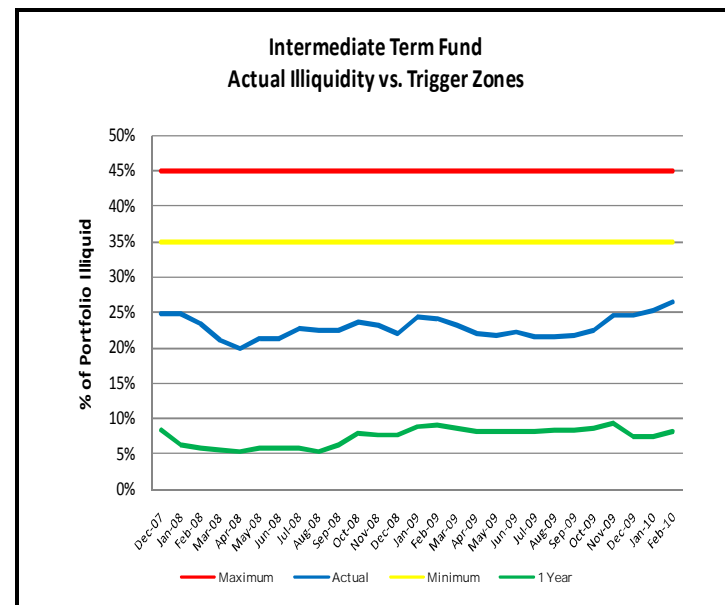
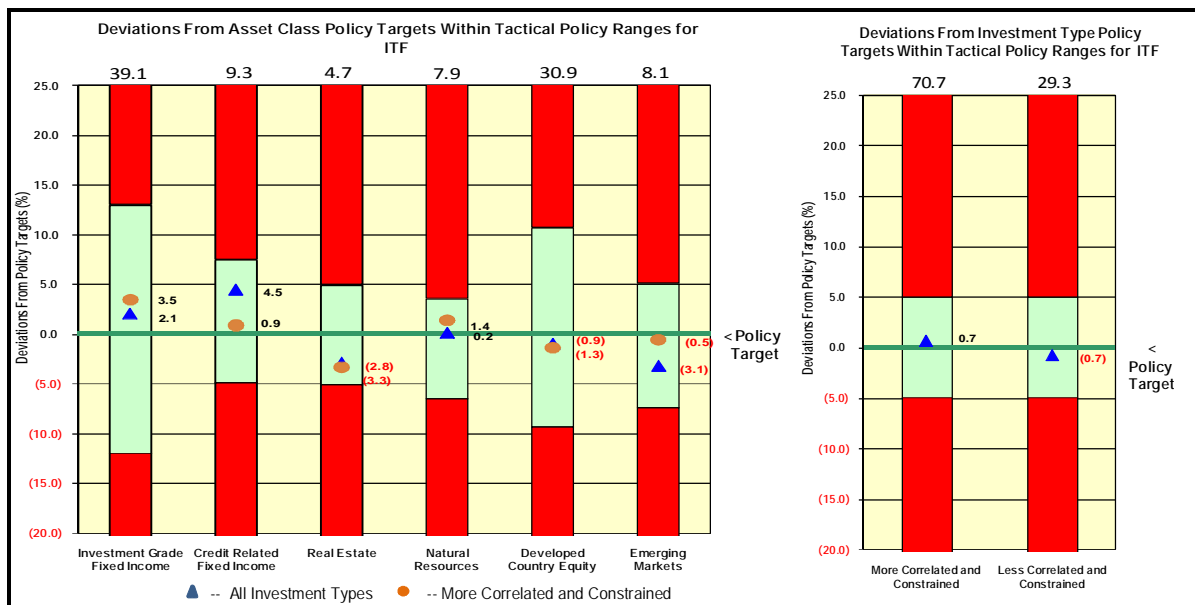


III. INTERMEDIATE TERM FUND Investment Reports for Periods Ended February 28, 2010

Prepared in accordance with Texas Education Code Sec. 51.0032

Summary of Capital Flows			
(\$ millions)	Fiscal Year Ended August 31, 2009	Quarter Ended February 28, 2010	Fiscal Year to Date February 28, 2010
Beginning Net Assets	\$ 3,875	\$ 3,928	\$ 3,572
Contributions	251	131	299
Withdrawals	(178)	(20)	(55)
Distributions	(98)	(30)	(58)
Investment Return (Net of Expenses)	(278)	19	270
Ending Net Assets	\$ 3,572	\$ 4,028	4,028

	Returns		Fiscal Year to Date		
	Portfolio	Policy Benchmark	From Asset Allocation	From Security Selection	Total
More Correlated and Constrained:					
Investment Grade	3.01%	1.76%	-0.08%	0.41%	0.33%
Credit-Related	21.49%	12.79%	0.15%	0.12%	0.27%
Real Estate	7.96%	7.11%	-0.15%	0.08%	-0.07%
Natural Resources	11.08%	7.25%	0.14%	0.23%	0.37%
Developed Country	8.10%	5.21%	-0.07%	0.43%	0.36%
Emerging Markets	11.76%	12.19%	0.05%	-0.03%	0.02%
Total More Correlated and Constrained	6.46%	4.71%	0.04%	1.24%	1.28%
Less Correlated and Constrained	9.74%	3.30%	-0.03%	1.74%	1.71%
Private Investments	0.00%	0.00%	0.00%	0.00%	0.00%
Total	7.38%	4.39%	0.01%	2.98%	2.99%



IV. SEPARATELY INVESTED ASSETS
Summary Investment Report at February 28, 2010
Report prepared in accordance with *Texas Education Code Sec. 51.0032*

ASSET TYPES	(\$ thousands)															
	FUND TYPE															
	CURRENT PURPOSE DESIGNATED		RESTRICTED		ENDOWMENT & SIMILAR FUNDS		ANNUITY & LIFE INCOME FUNDS		AGENCY FUNDS		TOTAL EXCLUDING OPERATING FUNDS		OPERATING FUNDS (SHORT TERM FUND)		TOTAL	
	BOOK	MARKET	BOOK	MARKET	BOOK	MARKET	BOOK	MARKET	BOOK	MARKET	BOOK	MARKET	BOOK	MARKET	BOOK	MARKET
Cash & Equivalents:																
Beginning value 11/30/09	-	-	1,992	1,992	33,718	33,718	1,075	1,075	5,070	5,070	41,855	41,855	1,639,443	1,639,443	1,681,298	1,681,298
Increase/(Decrease)	-	-	5,568	5,568	83,359	83,359	252	252	(532)	(532)	88,647	88,647	64,163	64,163	152,810	152,810
Ending value 02/28/10	-	-	7,560	7,560	117,077	117,077	1,327	1,327	4,538	4,538	130,502	130,502	1,703,606	1,703,606	1,834,108	1,834,108
Debt Securities:																
Beginning value 11/30/09	-	-	265	264	11,718	12,895	10,727	11,239	-	-	22,710	24,398	-	-	22,710	24,398
Increase/(Decrease)	-	-	36	36	(413)	(494)	(321)	(417)	-	-	(698)	(875)	-	-	(698)	(875)
Ending value 02/28/10	-	-	301	300	11,305	12,401	10,406	10,822	-	-	22,012	23,523	-	-	22,012	23,523
Equity Securities:																
Beginning value 11/30/09	17	3,894	550	517	28,236	27,407	13,867	12,281	-	-	42,670	44,099	-	-	42,670	44,099
Increase/(Decrease)	-	(348)	(193)	(191)	685	1,002	(295)	(627)	-	-	197	(164)	-	-	197	(164)
Ending value 02/28/10	17	3,546	357	326	28,921	28,409	13,572	11,654	-	-	42,867	43,935	-	-	42,867	43,935
Other:																
Beginning value 11/30/09	-	-	108	108	1	1	365	134	-	-	474	243	-	-	474	243
Increase/(Decrease)	-	-	530	530	1	1	5	3	918	918	1,454	1,452	-	-	1,454	1,452
Ending value 02/28/10	-	-	638	638	2	2	370	137	918	918	1,928	1,695	-	-	1,928	1,695
Total Assets:																
Beginning value 11/30/09	17	3,894	2,915	2,881	73,673	74,021	26,034	24,729	5,070	5,070	107,709	110,595	1,639,443	1,639,443	1,747,152	1,750,038
Increase/(Decrease)	-	(348)	5,941	5,943	83,632	83,868	(359)	(789)	386	386	89,600	89,060	64,163	64,163	153,763	153,223
Ending value 02/28/10	17	3,546	8,856	8,824	157,305	157,889	25,675	23,940	5,456	5,456	197,309	199,655	1,703,606	1,703,606	1,900,915	1,903,261

Details of individual assets by account furnished upon request.