

Design and Construction Update

OFPC - Active Projects

July 25, 2007

95 Total Active Projects **\$ 3,651,613,134**

25	Competitive Sealed Proposals	\$ 466,800,254
64	Construction Manager at Risk	\$ 3,002,590,726
6	Design-Build	\$ 182,222,154

42 In Design **\$ 1,191,280,000**

12	Competitive Sealed Proposals	\$ 218,400,000
29	Construction Manager at Risk	\$ 964,380,000
1	Design-Build	\$ 8,500,000

32 In Construction **\$ 1,510,625,726**

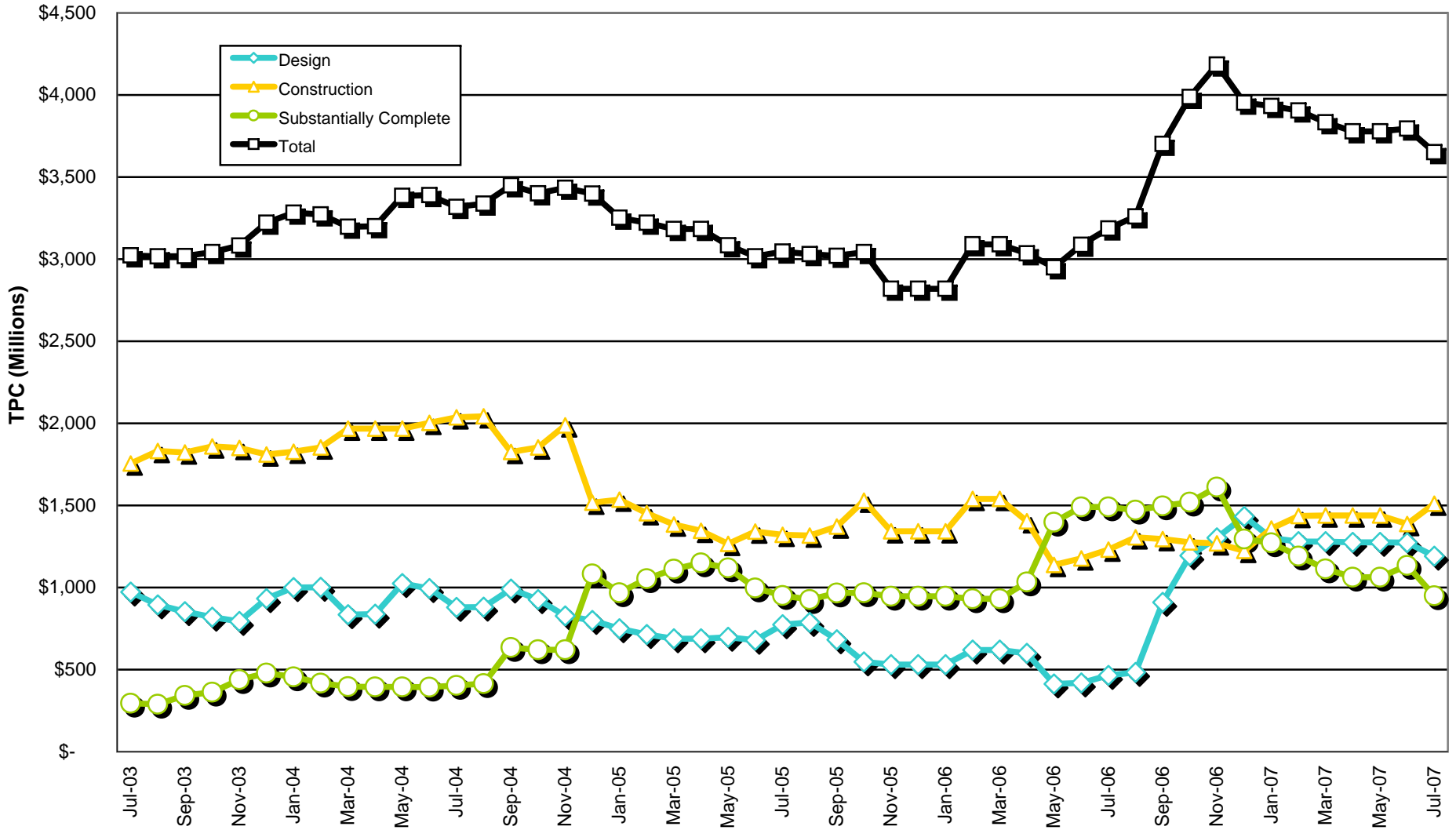
7	Competitive Sealed Proposals	\$ 111,644,000
23	Construction Manager at Risk	\$ 1,290,541,726
2	Design-Build	\$ 108,440,000

21 Substantially Complete **\$ 949,707,408**

6	Competitive Sealed Proposals	\$ 136,756,254
12	Construction Manager at Risk	\$ 747,669,000
3	Design-Build	\$ 65,282,154

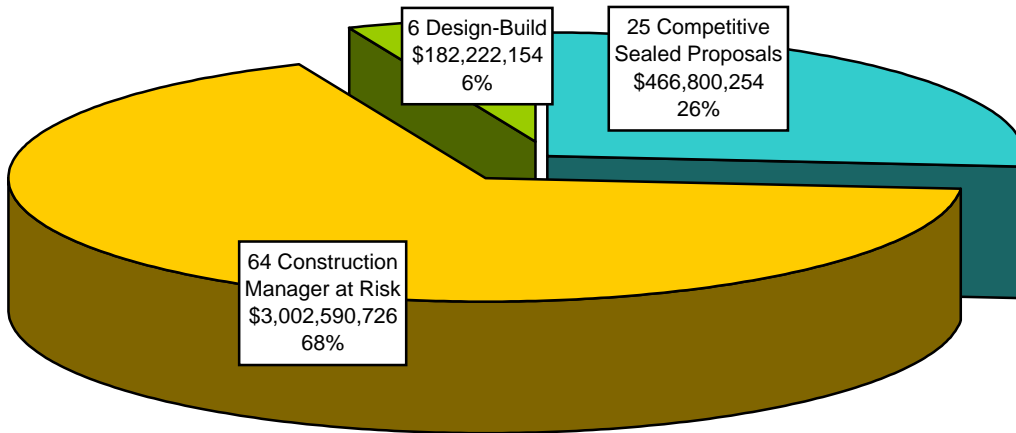
4 Year Total Project Cost Distribution - Month

OFPC - Active Projects



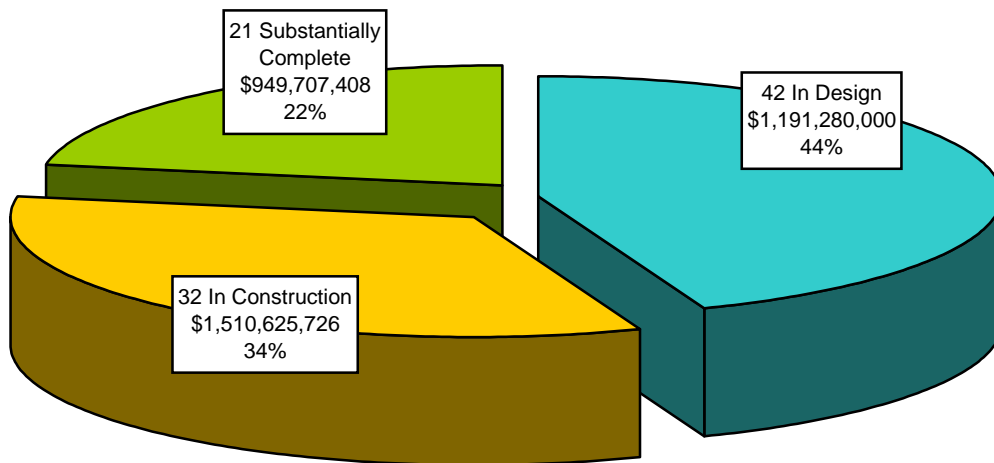
Total Project Cost Distribution - Delivery Method

OFPC - Active Projects



Total Project Cost Distribution - Project Status

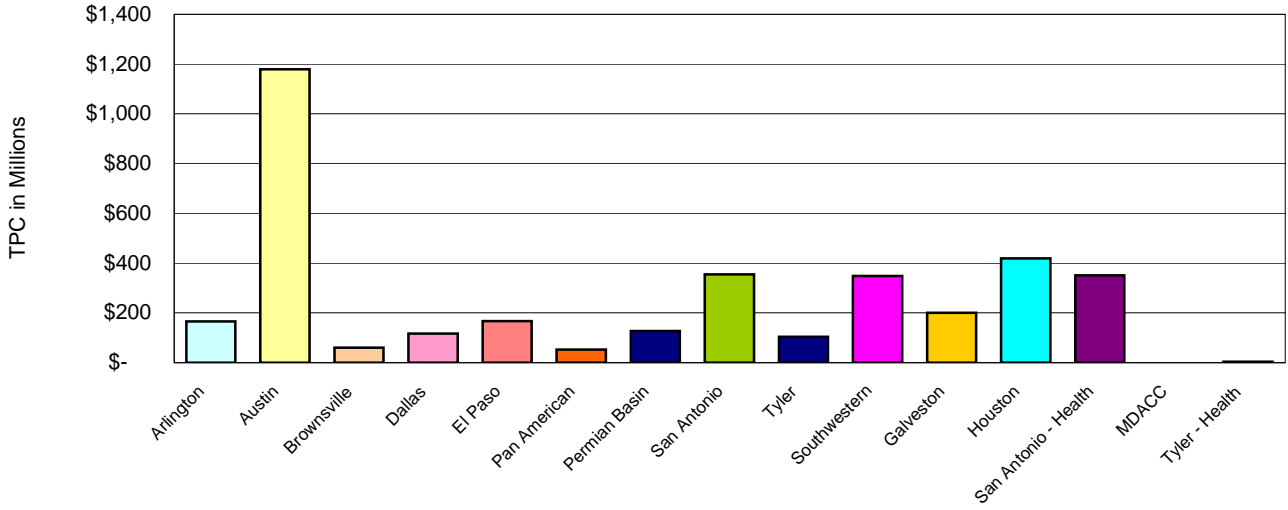
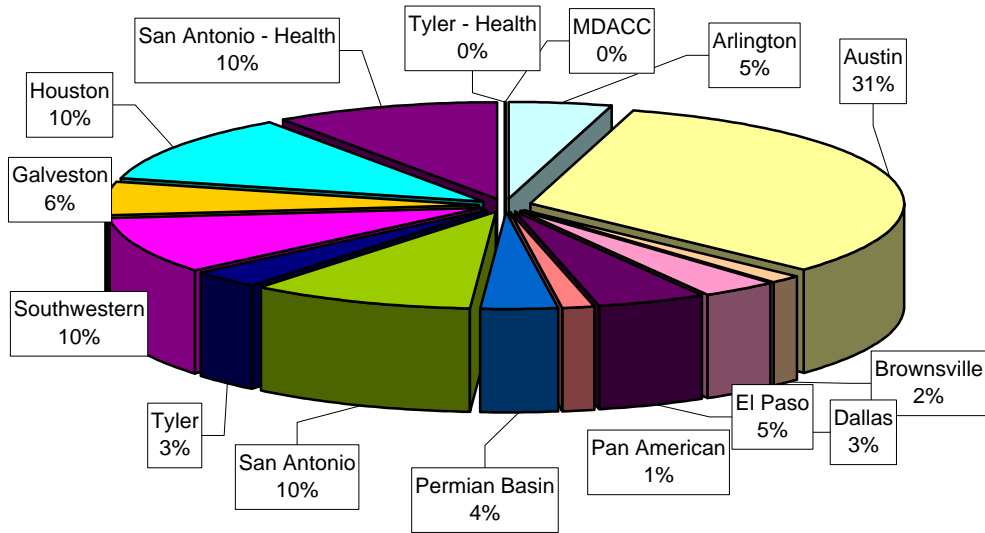
OFPC - Active Projects



Percentages are based on NUMBER of Projects, not Total Project Cost

Total Project Cost Distribution - Institution

OFPC - Active Projects



Percentages are based on Total Project Cost