



McWilliams School of  
Biomedical Informatics

# AI Assessment in an Academic Medical Center

May 15, 2025

Dr. Susan H. Fenton

[susan.h.fenton@uth.tmc.edu](mailto:susan.h.fenton@uth.tmc.edu)

# Background



Enterprise, protected AI resources available



Prompt engineering and MS Copilot training offered



University-wide AI council formed



Workgroup on AI for Teaching and Learning established

# Methods



Needs assessment survey suggested for faculty and students



HR wanted to include a staff needs assessment



Create a draft



Many reviews



Distributed on January 28<sup>th</sup> anonymously



Closed on February 24<sup>th</sup>

# Responses (8 min average)

Respondents	Number	Percentage
TOTAL	1,376	10.3% of 13,300
Faculty	375	27.2%
Staff	692	50.3%
Students/Trainees	309	22.5%

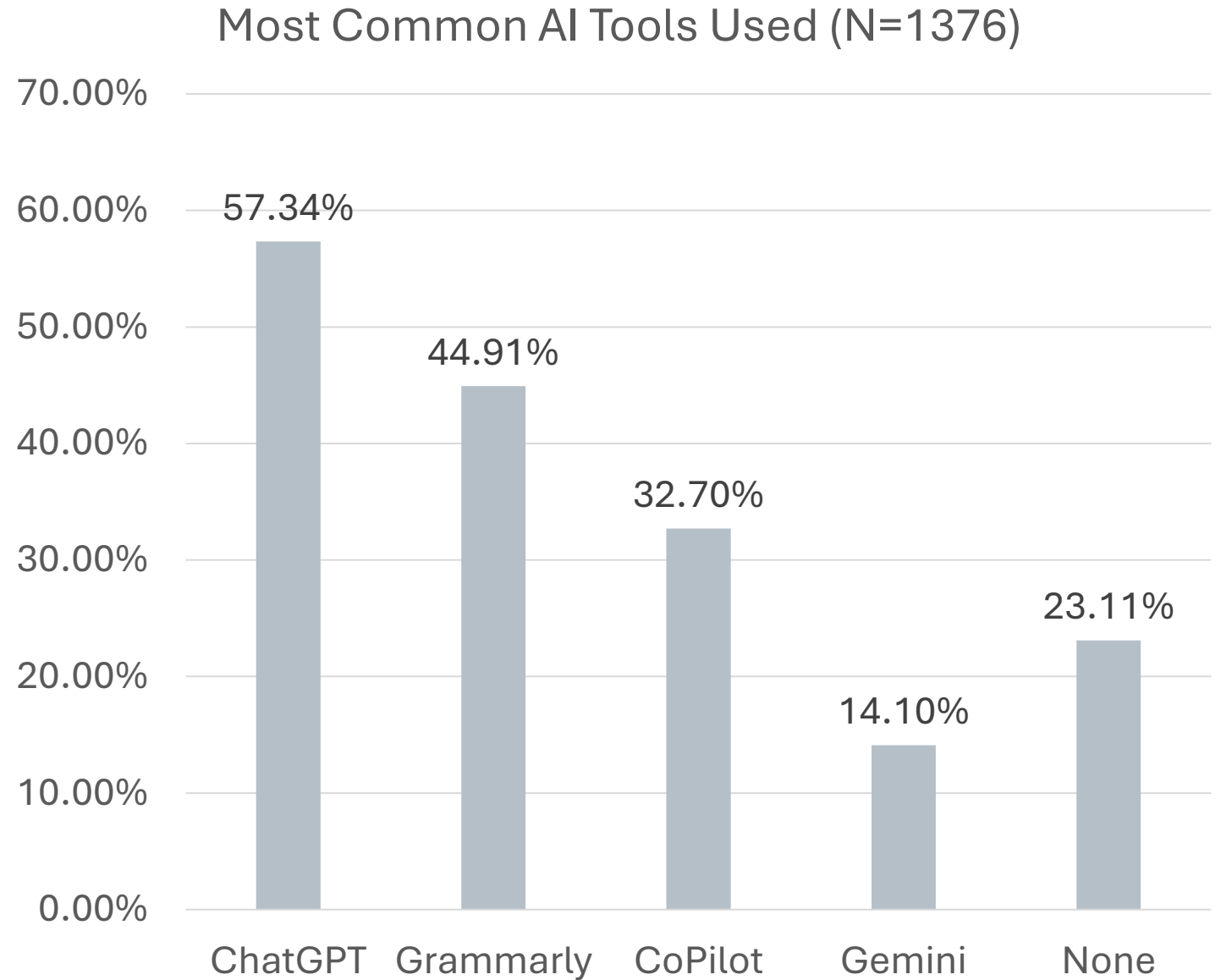
# Response by School/Unit (N=1350)

School (Total,%)	Faculty (%)	Staff (%)	Student/Trainees (%)
MMS (598, 44.3)	204 (34.1)	256 (42.8)	138 (23.1)
CSON (32, 2.4)	21 (65.6)	8 (25.0)	3 (9.4)
MSBMI (180, 13.3)	34 (18.9)	34 (18.9)	112 (62.2)
SBHS (19, 1.4)	2 (10.5)	14 (73.7)	3 (15.8)
SOD (116, 8.6)	67 (57.8)	34 (29.3)	15 (12.9)
SPH (94, 7.0)	45 (47.9)	28 (29.8)	21 (22.3)
Other (311, 23.0)	0	311 (100.0)	0

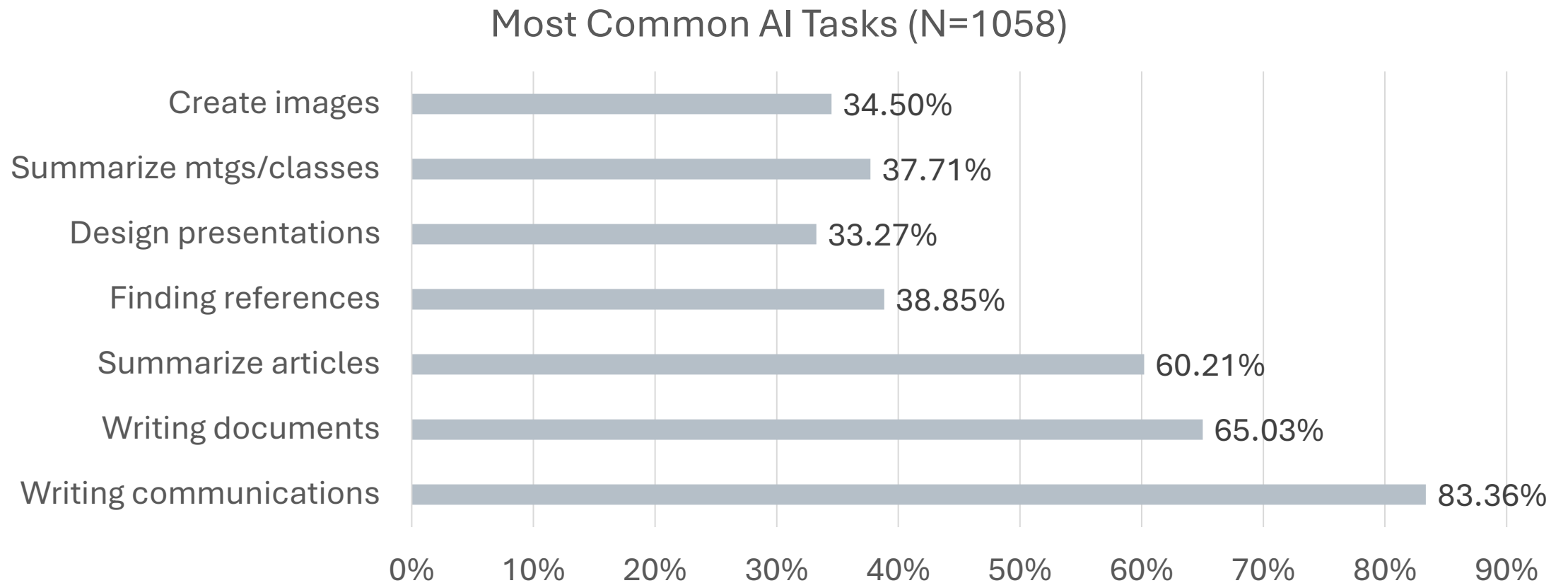
# Selected Survey Statements

Question	Faculty	Staff	Students
Feel pressured to include new technology in their roles	107/371 (28.8%)	196/681 (28.8%)	102/304 (33.6%)
Believe the use of AI in their role is inevitable	348/372 (93.5%)	613/671 (91.4%)	285/302 (94.4%)
Believe AI use by faculty is an unfair advantage	58/364 (15.9%)	-	58/300 (19.3%)
Believe AI use by students is an unfair advantage	110/362 (30.4%)	N/A	75/301 (24.9%)
Believe AI use by staff is an unfair advantage	N/A	141/659 (21.4%)	N/A
Fully understand the legal/copyright implications of using AI tools	146/370 (39.5%)	333/654 (50.9%)	168/303 (55.4%)

# Most Common AI Tools Used (N=1,376)



# Most Common AI Tasks (N=1,058)





# Key Findings



# Respondents are AI-Ready

---

90%+ of faculty, staff, and students believe AI is inevitable

---

Over 60% of faculty want legal and ethical training

---

OPPORTUNITY: A motivated population, ready to engage with AI, is calling for structured, guided support.

# Faculty and Students Want Guardrails



88% of students say faculty use of AI is or will be beneficial.



Faculty agree, but have concerns about fairness and critical thinking



Students value AI, but want clarity on acceptable use



**OPPORTUNITY:** Develop shared expectations to ensure AI supports, not replaces, strong teaching and learning.

# Staff Engagement Can Drive Impact

---

557 found AI beneficial

---

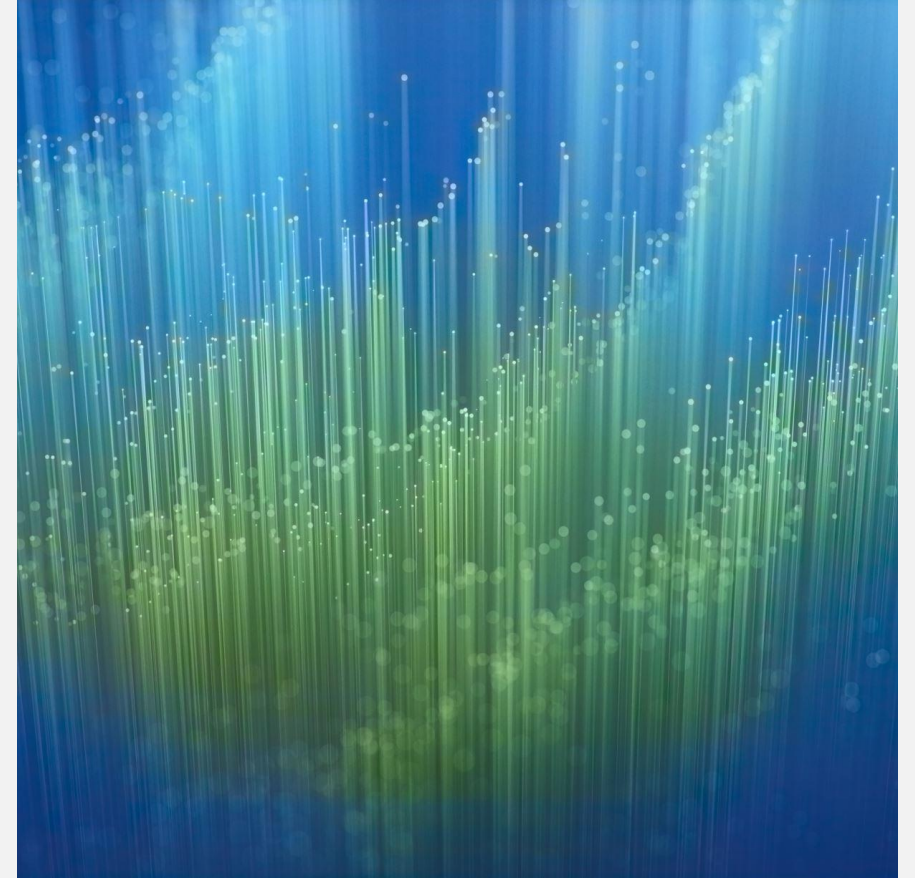
560 said it improves efficiency

---

Concerns are focused on clarity,  
access, and training

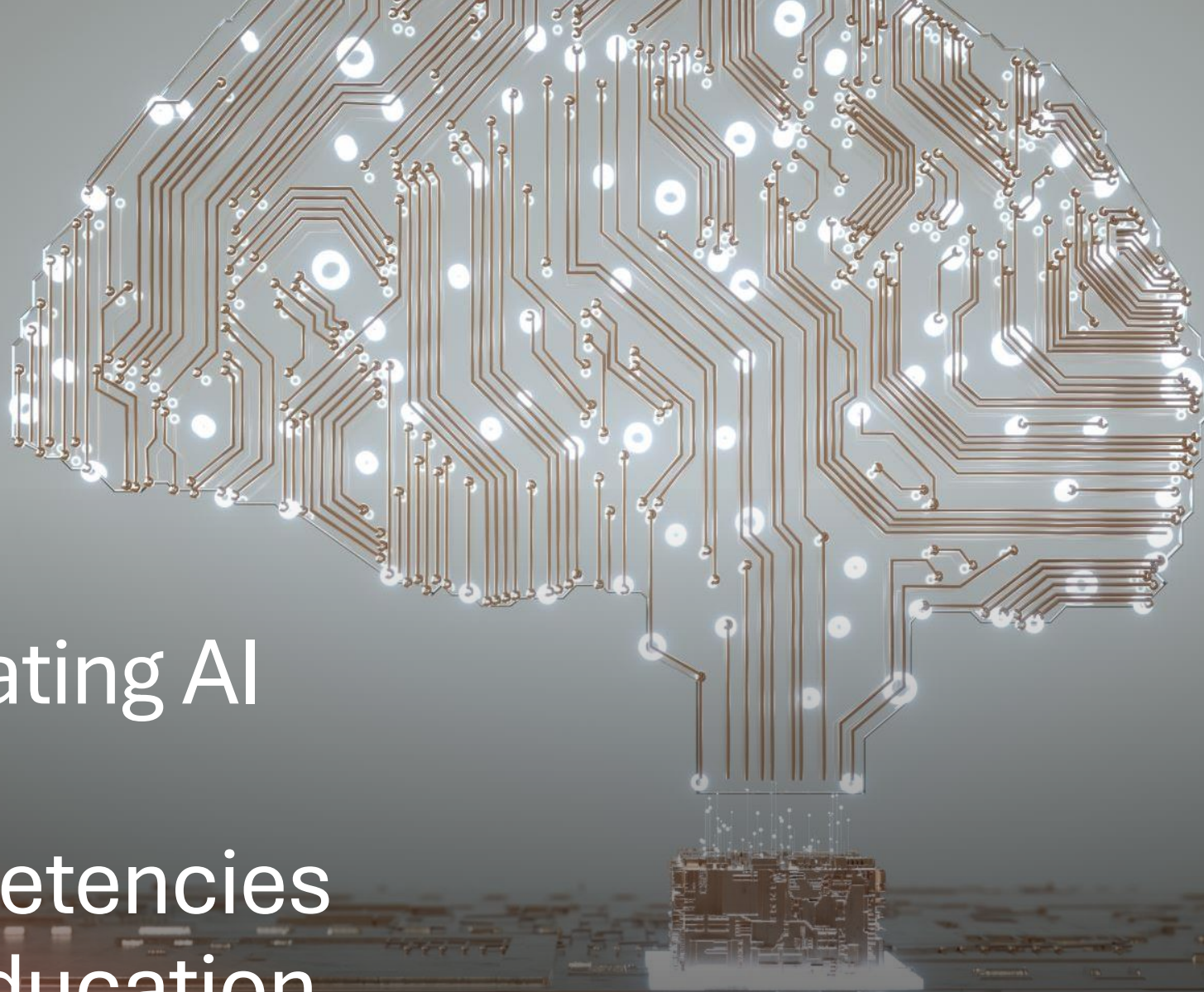
---

**OPPORTUNITY:** Investing in staff  
training will improve operations and  
extend the impact of AI





# Integrating AI and AI Competencies into Education





# Impact of AI on Education

It changes everything!



# Issues to Address

- General AI Literacy
- Equitable access to different tools
- Potential for policy impact
- Orientation and understanding to effective, ethical use
- When to use AI; when to evaluate AI competencies
- Teaching and assessment



# Summary

---

Rewiring the plane as it flies

---

Setting expectations at all levels

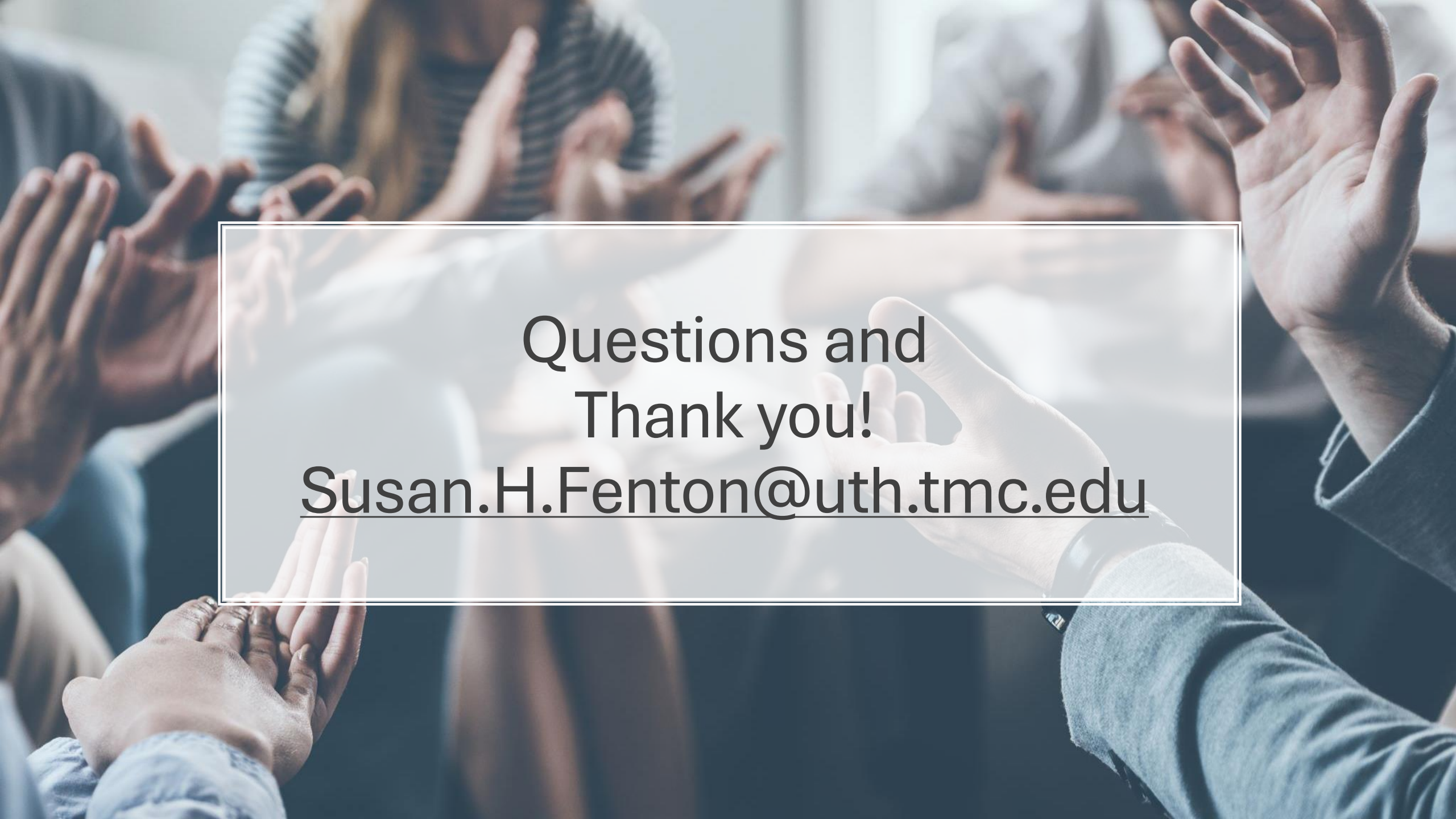
---

Developing university-wide training

---

Continual revision



A background image showing a group of people from the chest up, with their hands raised in a gesture of applause or agreement. The image is slightly blurred, focusing on the hands in the foreground. The hands are of various skin tones, suggesting a diverse group. The lighting is soft and even.

Questions and  
Thank you!  
[Susan.H.Fenton@uth.tmc.edu](mailto:Susan.H.Fenton@uth.tmc.edu)