

# Closing Panel & Call to Action

Jiajie Zhang, Ph.D., UTHealth Houston (Moderator)

Claus Jensen, Ph.D., UT Austin, Dell Medical School

David Jaffray, Ph.D., UT MD Anderson Cancer Center

Peter McCaffrey, M.D. University of Texas Medical Branch

Xiaoqian Jiang, Ph.D., UTHealth Houston

Yang Xie, Ph.D., UT Southwestern

# Developing a UT System-Wide Strategic Plan for AI in Healthcare

- Texas is the 8<sup>th</sup> biggest economy in the world, bigger than Russia and Canada
- UT System produces 63% of the state's medical degrees
- 7 health institutions and medical schools

## The 14 Institutions in the University of Texas System



# UTHealth Houston launches new AI Task Force

David Fanucchi • May 07, 2025



Graphic by UTHealth Houston (Photo by Getty Images)

A new Artificial Intelligence Task Force is being formed at UTHealth Houston with the aim of developing a comprehensive, enterprise-wide strategy for AI integration across the university's education, research, clinical care, and operations.

## Strategic Objectives



Articulating a compelling institutional vision for artificial intelligence.



Conducting a rigorous assessment of current AI capabilities, resources, and organizational gaps.



Defining strategic priorities to guide AI integration across mission-critical domains.



Recommending targeted, high-impact initiatives to accelerate institutional progress.



Establishing governance, ethical, and compliance frameworks to ensure responsible AI deployment.



Enabling cross-institutional collaboration across schools, clinical entities, and operational units to unlock system-wide value.

President						
University Executive Council						
<div>AI Task Force Steering Committee</div> <div>Chair: Jiajie Zhang</div> <div>Members: Chairs and Co-Chairs of Subcommittees</div> <div>Management Team: Amy Franklin, Judy Young, Yukiko Bryson</div> <div>Legal Advisor: William McElhiney</div>						
Research	Education	Patient Care	Technology and Implementation	Data Platform	Governance and Policy	Partnerships
Chair: Xiaoqian Jiang Hongfang Liu Hulin Wu	Chair: Susan Fenton	Chair: Martin Citardi Sean Savitz	Chair: Xiaoqian Jiang Martin Citardi Dustan Brennan	Chair: Elmer Bernstam Bassel Choucair GQ Zhang	Chair: Amar Yousif Kevin Dillon	Chair: Babatope Fatuyi
12 members	17 members	11 members	11 members	5 members	8 members	5 members

# Six Months, Four Phases



Phase 1: Strategic Landscape Assessment (Month 1–2)



Phase 2: Strategy and Policy Architecture (Month 3–4)



Phase 3: Alignment and Ecosystem Engagement (Month 5)

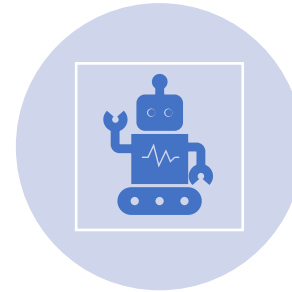


Phase 4: Finalization and Strategic Rollout (Month 6)

# Core Deliverables



A Comprehensive Institutional AI Strategy, articulating the vision, priorities, and path forward.



Subcommittee Strategic Reports, detailing insights and recommendations across seven core domains.



A robust AI Governance and Compliance Framework, addressing data ethics, security, risk, and regulatory alignment.



A Stakeholder Engagement and Communications Plan, designed to support internal alignment and external positioning.

# Questions

- If we were to develop a UT System-wide strategic plan for AI in healthcare, what each institution can contribute to the seven core areas:
  - Research
  - Education
  - Patient care
  - Technology and implementation
  - Data platforms
  - Governance and Policy
  - Partnership
- What do we need from the system