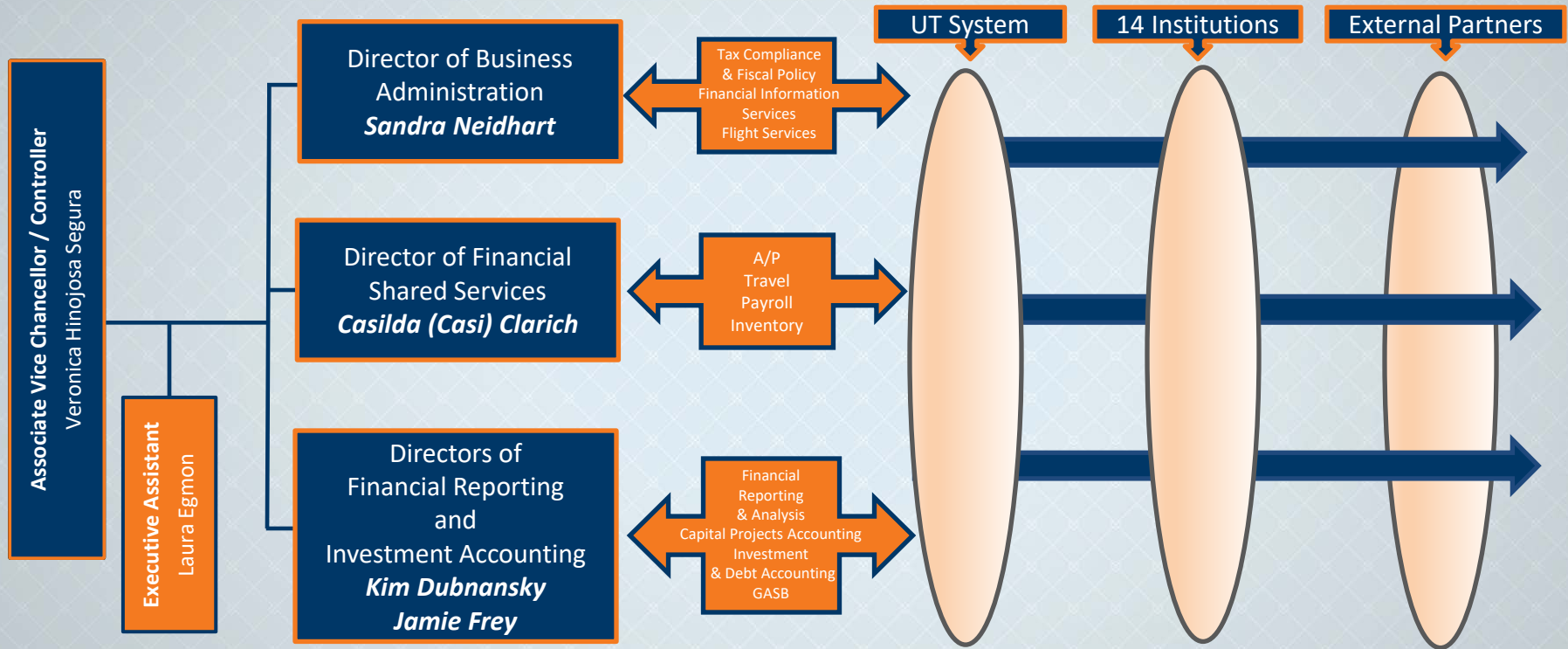
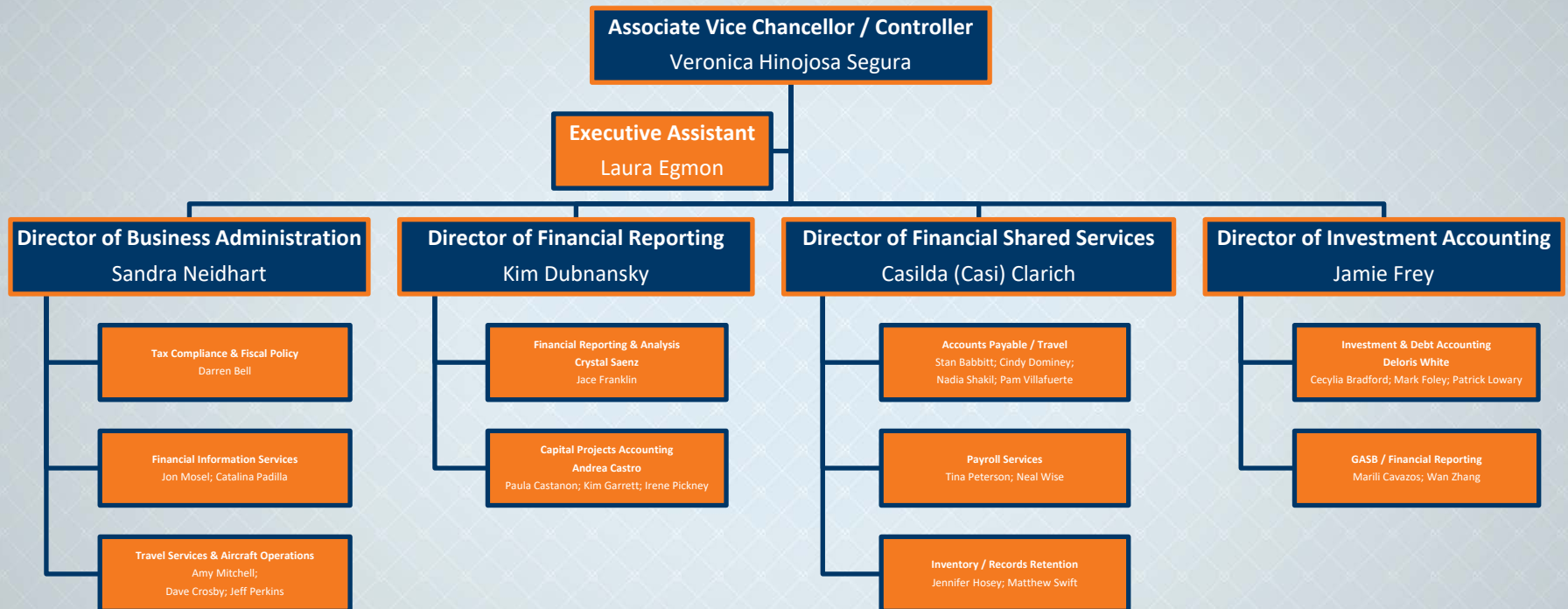


Center of Excellence (CoE) Org Structure



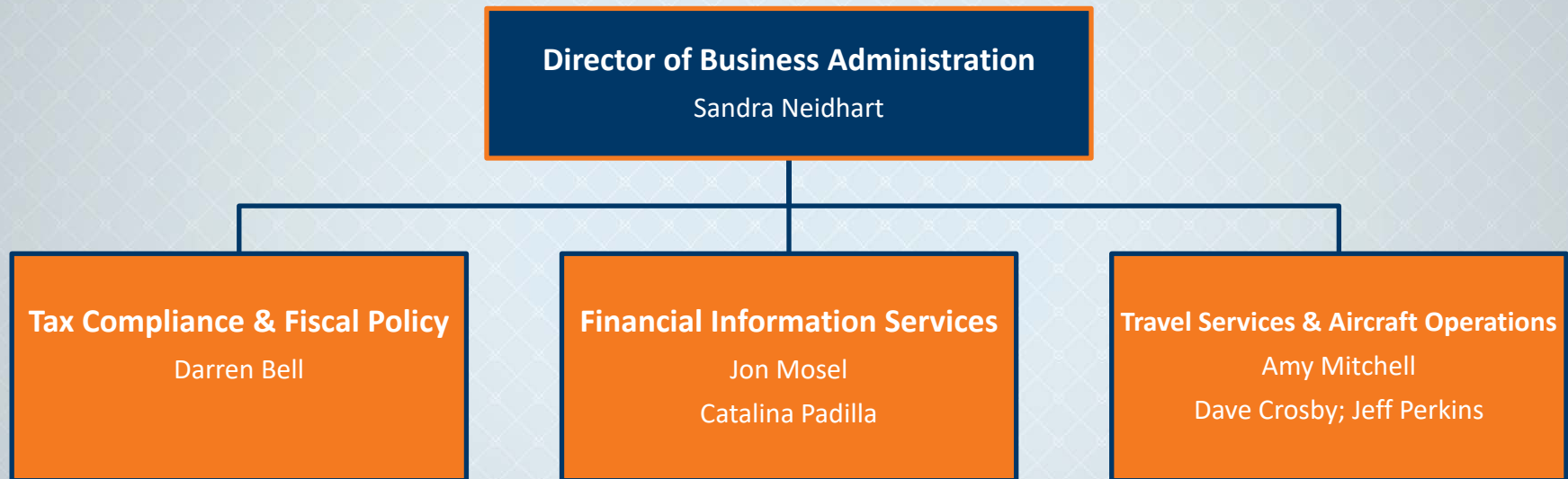
All Units



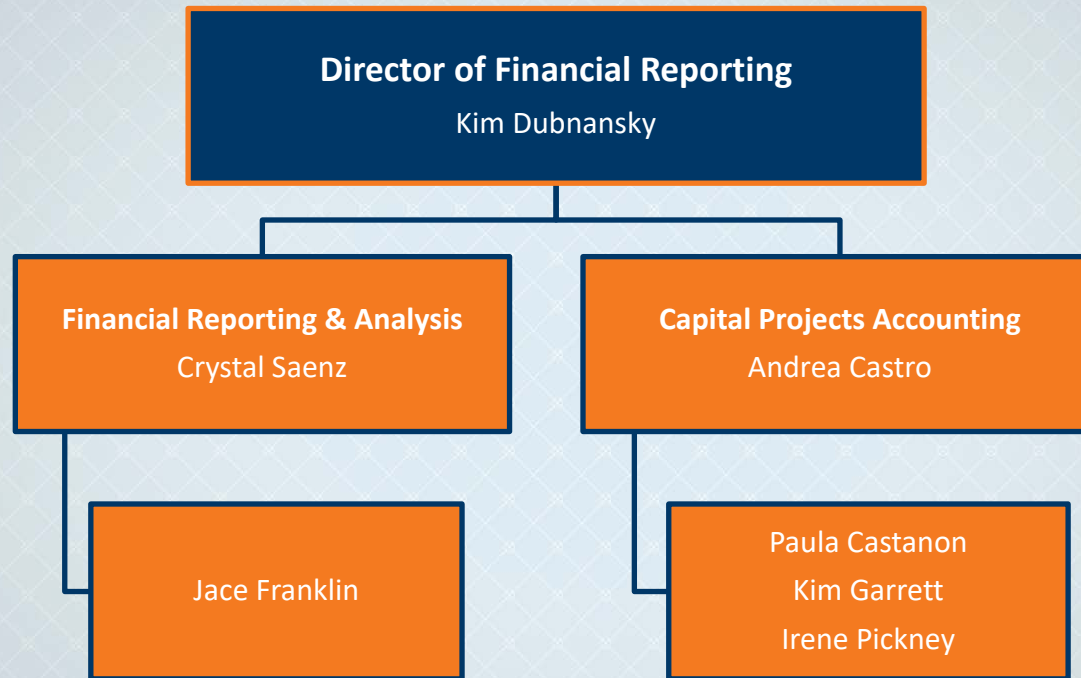
**Centers of
Excellence (COE)**



Business Administration



Financial Reporting



Financial Shared Services

Director of Financial Shared Services

Casilda (Casi) Clarich

Accounts Payable / Travel

Stan Babbitt
Cindy Dominey
Nadia Shakil
Pam Villafuerte

Payroll Services

Tina Peterson
Neal Wise

Inventory / Record Retention

Jennifer Hosey
Matthew Swift



Investment Accounting

