



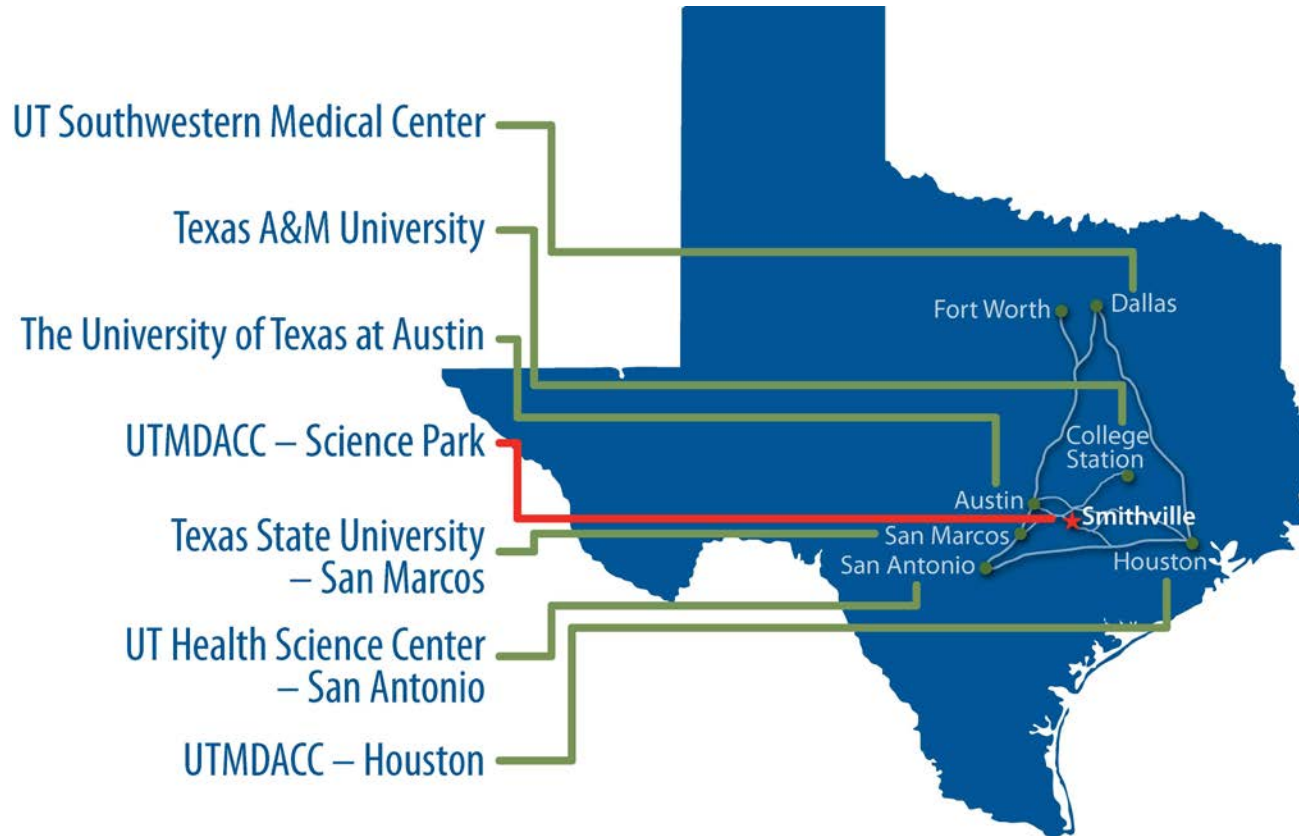
THE UNIVERSITY OF TEXAS

**MD Anderson**  
**Cancer Center**

Making Cancer History®

Virginia Harris Cockrell Cancer Research Center at  
The University of Texas M D Anderson Cancer Center Science Park  
Department of Molecular Carcinogenesis  
Smithville, TX

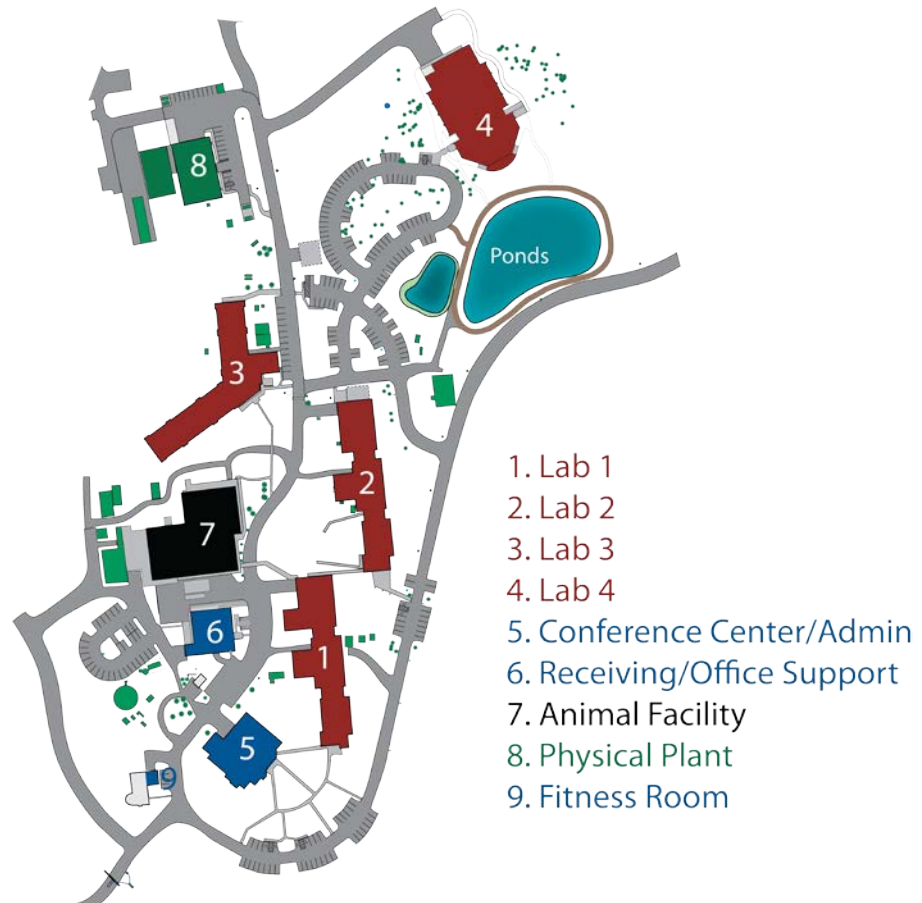
# Our Unique Location in Central Texas





# Departmental Space

- 4 lab buildings
- Conference center for administration, meeting rooms, IT
- Office support building
- Animal facility
- Physical Plant (Maintenance Warehouse & Central plant)



# Campus Highlights

- 717 mostly wooded acres
- Approximately 60 developed acres
- Land is nestled within Buescher State Park
- Campus was developed as a science park to blend with the scenic park atmosphere
- Less confounding variables compared to metropolitan area
- Opportunities for ecological research on the campus and/or in collaboration with nearby Stengl Research Station

# Campus Infrastructure

- 10 gigabit fiber feeds campus and buildings
- AT&T DAS network
- Redundant normal power feeds (Generator backup)
- All buildings connected to emergency power
- Natural gas
- City of Smithville sewer
- Dual TCEQ Public Water System Public (Aqua & On-site Well)
- Johnson Controls based BAS

# Campus Infrastructure Continued

- JCI-Simplex Monitored Fire Alarm System
- Badged Building and Gated access with remote camera monitoring
- Secondary Irrigation Water Well and 100,000 gallon storage capacity

# Lab Building Highlights

- Combination of open & closed, BSL-2, wet labs
- Some labs have built-in casework
- 100% outdoor makeup air supply
- Manifolded exhaust
- Sheet vinyl flooring in all labs
- Common lab utilities: vacuum, natural gas, pressurized air, emergency power, critical alarm, eye wash and safety showers
- Chemical fume hoods (if conveyed)
- Significant interior renovations over the years

# Griffin Animal Facility Highlights

- AAALAC accredited rodent vivarium
- Maximum mouse population: ~ 30K
- 100% outdoor air supply with smoke filtration
- Automatic animal watering system (alarmed)
- 2 tunnel washers, 1 rack washer, 2 pass thru bulk autoclaves
- Hi/low timed lighting controls
- Cooled feed storage
- DustControl clean and dirty bedding distribution system
- Redundant chillers and dual fuel boilers



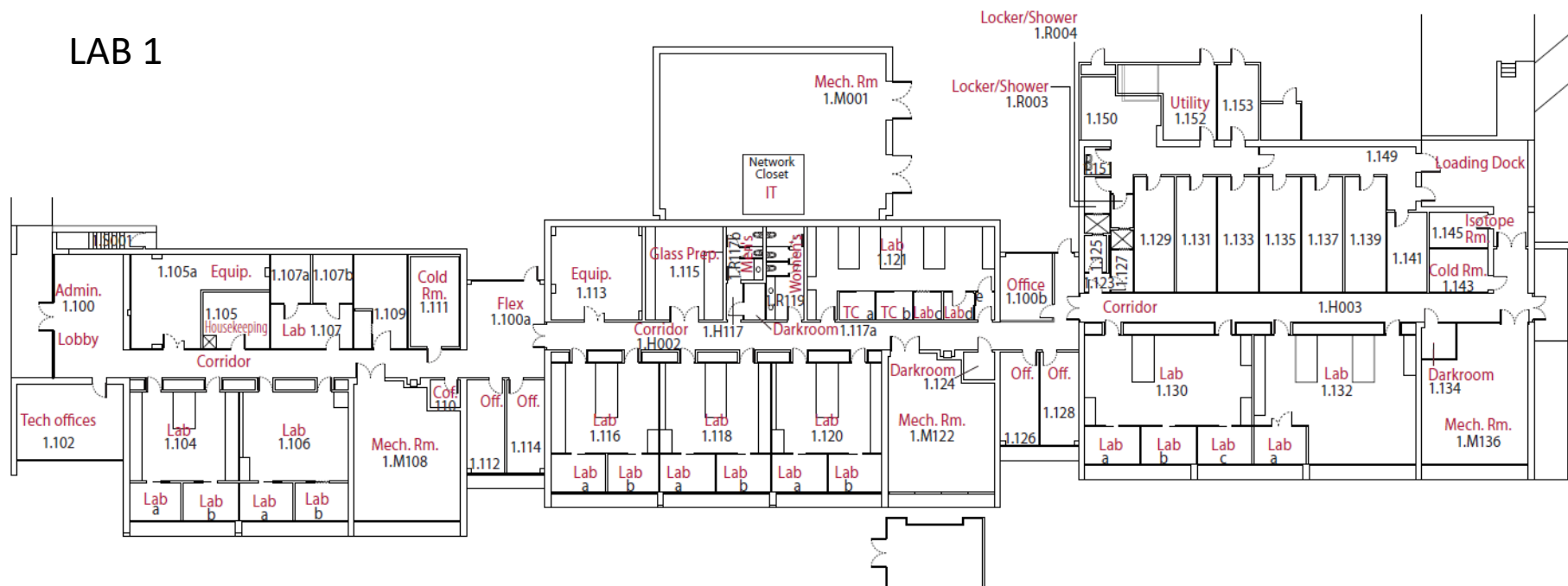
# Key Buildings

Building Name	Year Built	Gross Sqft
Lab I	1978	21,334
Jessie H. Jones Research Laboratory (Lab 2)	1978	20,696
Ralph and Lillian Meadows Mole. Bio. Resrch Fac.(Lab 3)	1992	33,203
Laboratory Building IV	2009	26,046
A. Clark Griffin Facility	1984	27,673
Jake J.J. Pickle Conf. Center	1978	11,225
Office Support Building	1989	6,114
Smithville Physical Plant	2004	8,682
Smithville Central Plant	2010	5,775

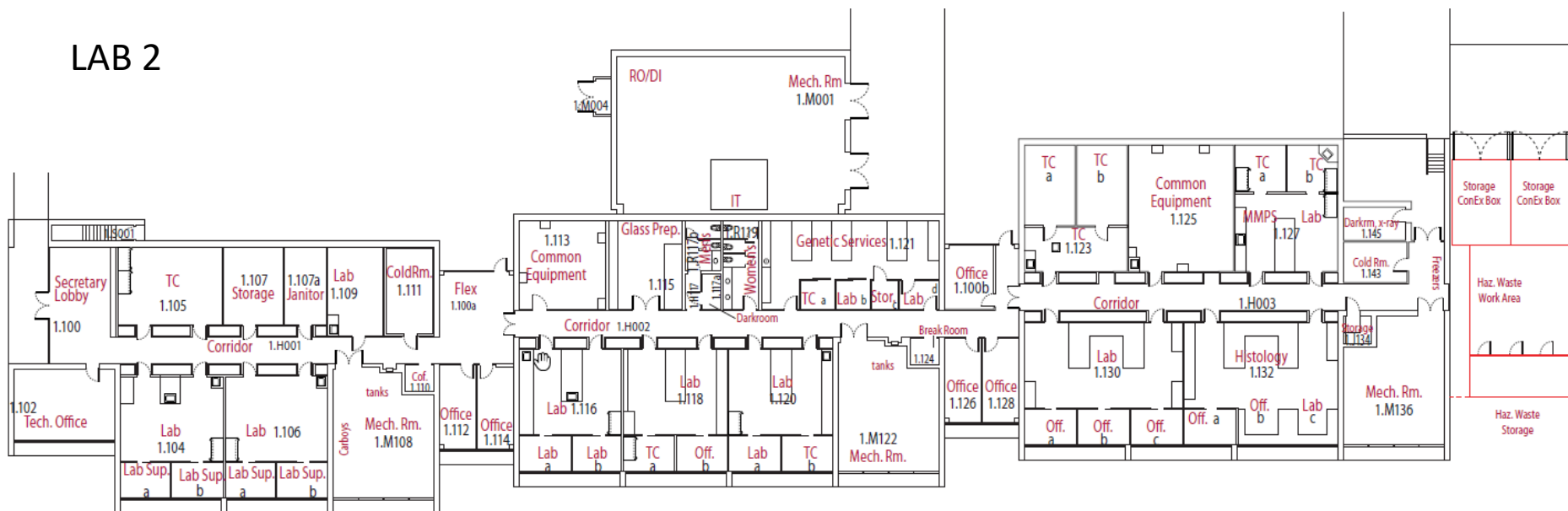
# Space Summary

Room Type	Net Sqft
Laboratory	24,359
Office	17,938
Animal Quarters & Service	15,067
Non_Class Lab Service	6,418
Tissue Culture Facility	4,524
Food Facilities	2,267
Cold Room/Walk-in	1,983
Conference	2,856
Glassware Prep and Sterilization	1,408
Dark Room	468
Radioisot or Biohaz Stor.	236

# LAB 1



## LAB 2



# Labs 1 & 2

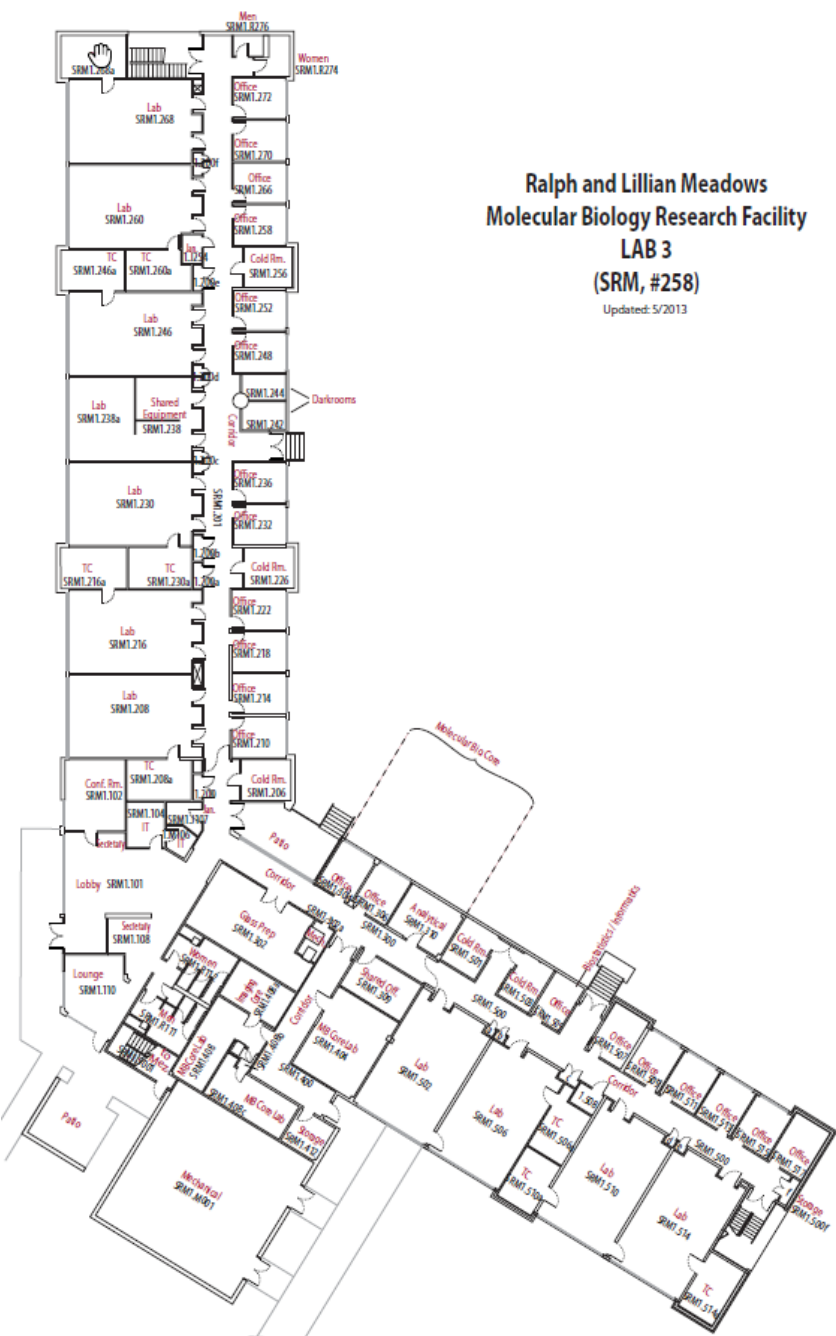




**Dr. Jim Allison, Lab 1 1977-1984**  
**Nobel Laureate, 2018**

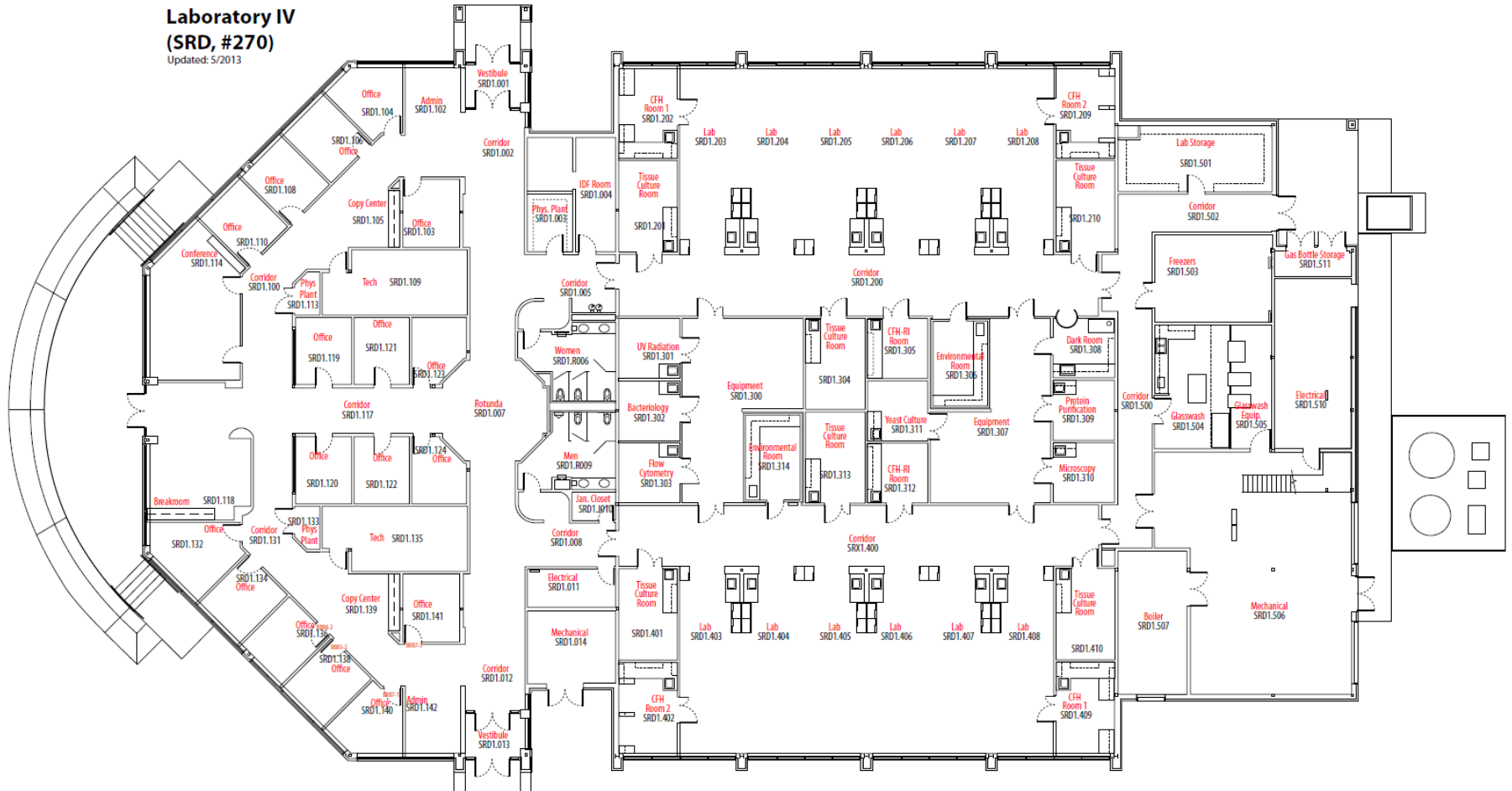




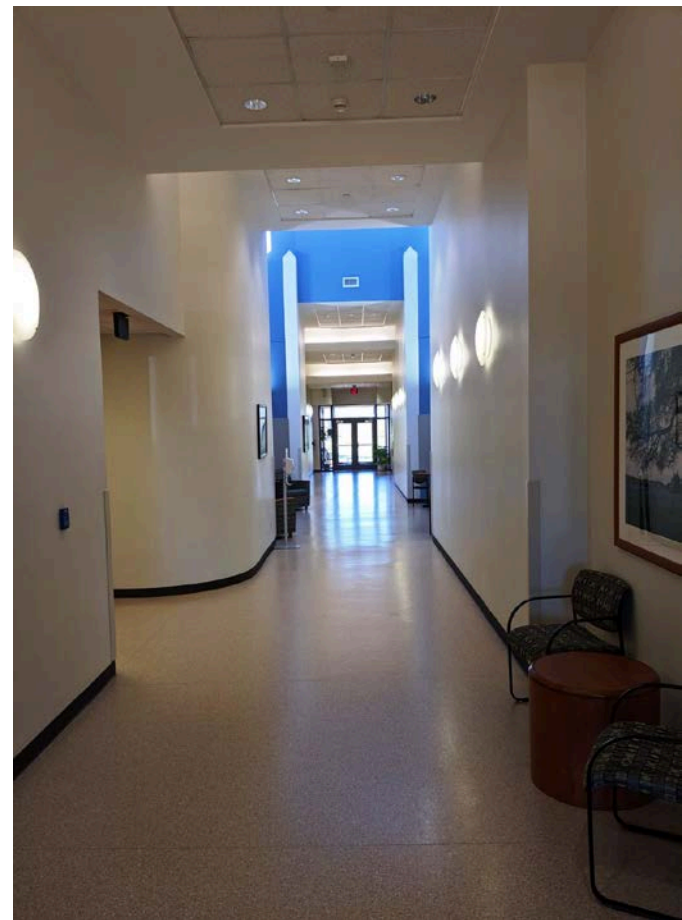




## Updated: 5/2013



# Lab IV



# A. Clark Griffin Research Facility (RSF, SRG, #254)

Updated: 6/2013





## Griffin Vivarium and Research Building





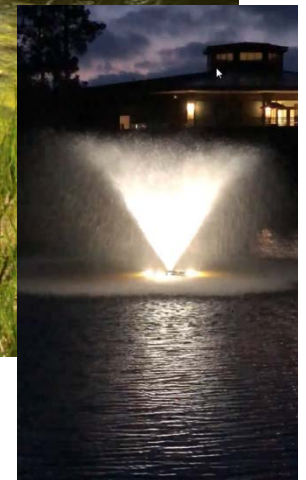






Conference Center





Lab 4 and Retention Pond





Campus Aerial View



Campus Aerial View