

# UT System SmartBook

---

*A Handy Reference*

V3 - published May 7, 2015

*produced by the Office of Strategic Initiatives*

CONTENTS

STUDENTS ..... 3

NOTES PAGE..... 14

FACULTY / EMPLOYEES.....15

NOTES PAGE .....20

RESEARCH / TECH TRANSFER ..... 21

BUDGET / FINANCE ..... 25

NOTES PAGE..... 32

Notes:

- Some data may not be available for The University of Texas at Brownsville because of their unique enrollment partnership with Texas Southmost College. Though The University of Texas at Brownsville (UTB) began operating independently in the 2013-14 academic year, its partnership with the community college, Texas Southmost College (TSC), will end by 8/31/2015.
- The University of Texas Health Science Center at Tyler (UT Health Northeast) did not enroll students until fall 2012.

# STUDENTS

## Contents

Enrollment.....	4
Undergraduate Demographics.....	6
Cost of Attendance .....	7
Degrees Awarded .....	8
Graduation Rates .....	11
Post-Graduation Wages for Baccalaureate Graduates .....	12
Post-Graduation Wages for Medical School Graduates .....	13

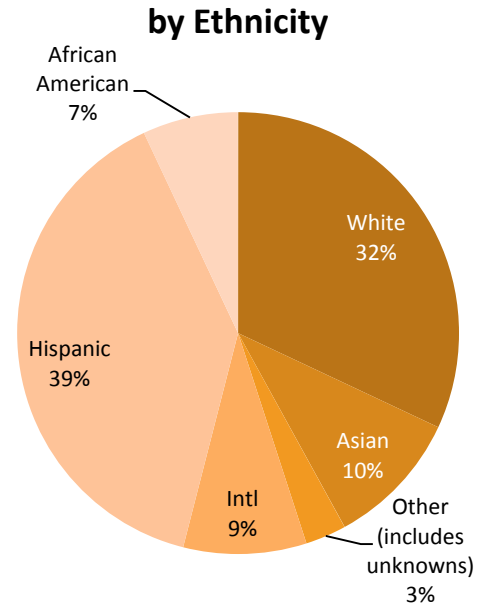
## Enrollment - UT System

Fall 2014

<b>Total</b>	<b>217,112</b>
Academic	203,566
Health	13,546
Undergraduate + Post-bacc	163,660
Graduate / Professional	53,452

59% of all UT System students—and 67% of undergraduates—are minority students (Hispanic, African-American, Asian-American, and Other).

Enrollment has increased 3% over the past five years, with the largest percent increase at the master's and professional levels (11% and 3%, respectively).



## Enrollment by Institution

Fall 2014

	Undergrad	Post-Bacc	Master's	Doctoral	Professional	Total	5-Yr Change
UTA	24,476	1,261	8,032	1,099	0	34,868	5.7%
UT Austin	39,523	0	5,352	4,817	1,620	51,312	0.2%
UTB	6,924	76	923	86	0	8,009	-47.4%
UTD	14,033	649	7,474	896	43	23,095	34.8%
UTEP	19,815	99	2,434	612	83	23,043	4.5%
UTPA	17,858	342	2,665	150	0	21,015	12.1%
UTPB	4,661	333	566	0	0	5,560	36.8%
UTSA	24,285	297	3,264	782	0	28,628	-5.4%
UTT	5,634	378	1,914	110	0	8,036	24.7%
<b>Academic</b>	<b>157,209</b>	<b>3,435</b>	<b>32,624</b>	<b>8,552</b>	<b>1,746</b>	<b>203,566</b>	<b>2.8%</b>
UTSWMC	5	19	897	436	953	2,310	-6.4%
UTMB	708	128	893	265	1,217	3,211	20.7%
UTHSCH	657	370	1,153	958	1,418	4,556	1.6%
UTHSCSA	825	12	537	287	1,486	3,147	-3.8%
UTMDA	292	-	11	-	-	303	22.2%
UTHSCT	-	-	19	-	-	19	-
<b>Health</b>	<b>2,487</b>	<b>529</b>	<b>3,510</b>	<b>1,946</b>	<b>5,074</b>	<b>13,546</b>	<b>3.2%</b>
<b>Total</b>	<b>159,696</b>	<b>3,964</b>	<b>36,134</b>	<b>10,498</b>	<b>6,820</b>	<b>217,112</b>	<b>2.8%</b>

## Undergraduate Demographic Profile

*Fall 2014, does not include post-baccalaureates*

	% Undergraduate	% First Time in College	% First Time, Full Time	% Underrepresented Minority	% Receiving Pell ( Fall 2013)
UTA	70.2%	11.0%	10.8%	58.3%	42.1%
UT Austin	77.0%	17.7%	17.1%	51.0%	26.1%
UTB	86.5%	13.2%	11.7%	90.7%	64.3%
UTD	60.8%	17.7%	17.4%	57.8%	33.4%
UTEP	86.0%	15.2%	13.5%	87.3%	57.3%
UTPA	85.0%	18.8%	17.0%	95.0%	64.2%
UTPB	83.8%	9.2%	8.8%	57.4%	31.0%
UTSA	84.8%	20.3%	20.2%	69.6%	38.0%
UTT	70.1%	12.2%	11.9%	38.9%	42.9%

- Undergraduates account for 77% of students at academic institutions. 67% of those undergraduates are underrepresented minorities.
- Undergraduates account for 18% of students at health institutions; very few are first time in college.

## Cost of Attendance (In-State)

AY 2012-13

	Avg In-State Total Academic Cost	% Receiving Need-Based Grant Aid	Avg % Discount for those Receiving Aid	Avg Net Academic Cost	Avg % Discount
UTA	\$9,292	54.5%	75.0%	\$5,493	40.9%
UT Austin	9,790	37.7	88.4	6,528	33.3
UTB	6,258	72.4	95.1	1,948	68.9
UTD	11,537	46.7	70.1	7,759	32.7
UTEP	7,116	66.6	99.8	2,383	66.5
UTPA	6,271	78.4	100.0	1,354	78.4
UTPB	6,708	55.7	89.6	3,358	49.9
UTSA	8,984	57.3	68.1	5,480	39.0
UTT	7,222	60.1	88.5	3,377	53.2
<b>Average</b>	<b>\$8,782</b>	<b>54.0%</b>	<b>80.4%</b>	<b>\$4,970</b>	<b>43.4%</b>

**Average Total Academic Cost** represents the sum of all statutory, designated, and board-authorized tuition, along with mandatory fees (including college and course fees). It is derived from actual fee bills for resident undergraduate students enrolled for 15 semester credit hours in the fall and spring semesters.

**Average Net Academic Cost** for all full-time students is derived by subtracting the total need-based grant aid from the total academic costs of all students and then dividing by the total number of students.

## Degrees – UT System

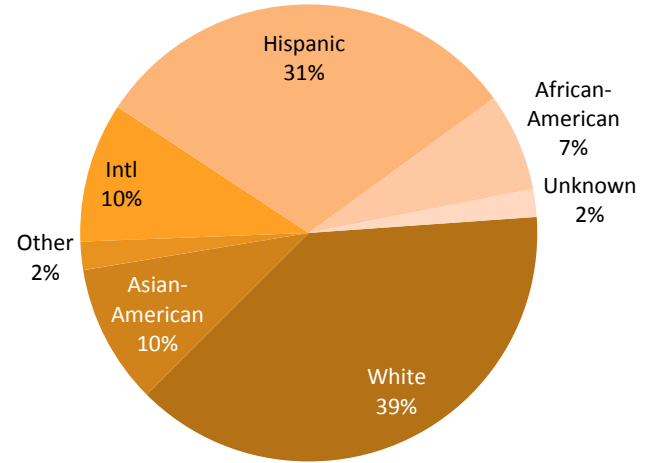
AY 2013-14

<b>Total</b>	<b>51,882</b>
Academic	47,202
Health	4,680
Undergraduate	34,017
Graduate / Professional	17,865

49% of all UT System degrees—and 57% of undergraduate degrees—are awarded to minority students (Hispanic, African-American, Asian-American, and Other).

Degrees awarded have increased 20% over the past five years, with the largest percent increase at the master's and doctoral levels (31% and 23%, respectively). Baccalaureate degrees awarded increased 17%.

## by Ethnicity





## Degrees by Institution

AY 2013-14

	Baccalaureate	Master's	Doctoral	Professional	All Certificates	Total	5-Yr Change
UTA	6,738	2,502	225	0	182	9,647	35.3%
UT Austin	9,482	3,145	877	477	0	13,981	5.5%
UTB	1,069	276	2	0	0	1,347	7.0%
UTD	2,811	2,960	178	10	27	5,986	27.1%
UTEP	3,214	985	127	24	18	4,368	8.9%
UTPA	2,785	740	18	0	6	3,549	7.8%
UTPB	626	196	0	0	17	839	18.7%
UTSA	4,552	1,180	105	0	0	5,837	15.4%
UTT	1,084	550	11	0	3	1,648	8.4%
<b>Academic</b>	<b>32,361</b>	<b>12,534</b>	<b>1,543</b>	<b>511</b>	<b>253</b>	<b>47,202</b>	<b>16.4%</b>
UTSWMC	2	103	92	257	196	650	2.5%
UTMB	456	244	50	286	107	1,143	26.4%
UTHSCH	459	499	196	310	32	1,496	31.5%
UTHSCSA	435	235	49	380	147	1,246	2.9%
UTMDA	142	0	0	0	0	142	22.5%
UTHSCT	0	3	0	0	0	3	--
<b>Health</b>	<b>1,494</b>	<b>1,084</b>	<b>387</b>	<b>1,233</b>	<b>482</b>	<b>4,680</b>	<b>18.4%</b>
<b>Total</b>	<b>33,855</b>	<b>13,618</b>	<b>1,930</b>	<b>1,744</b>	<b>735</b>	<b>51,882</b>	<b>16.6%</b>

## STEM Degrees as a Percent of Total Degrees Awarded

*UT System Academic Institutions, 2013*

	STEM Degrees as a Percent of Total Degrees Awarded			
	UT System Academic - # of STEM Degrees	UT System Academic	Other TX Public Academic	National Public
Baccalaureate	7,274	23.3%	18.8%	19.9%
Master's	2,567	20.3%	16.8%	18.2%
Doctoral	665	47.3%	37.6%	44.3%
<b>Total</b>	10,506	23.2%	18.7%	20.1%

Based on the National Science Foundation STEM classification. Includes chemistry; engineering; mathematics; physics/astronomy; the agricultural, computer, environmental, geo- and life/biological sciences; and technology/technician-related fields such as electronic and computer engineering and environmental control technology.

## Graduation Rates

	4-Year Same (2010 cohort)	5-Yr Trend	6-Year Same or Other (2008 cohort)	5-Yr Trend	4-Yr Rate for Community College Transfers	5-Yr Trend
UTA	20.6%	2.6%	52.7%	2.0%	48.8%	1.8%
UT Austin	53.5%	3.1%	83.6%	0.7%	70.9%	1.3%
UTD	50.5%	5.9%	75.9%	5.2%	60.7%	0.9%
UTEP	14.8%	3.8%	42.2%	4.8%	47.9%	-2.4%
UTPA	18.9%	2.0%	49.3%	10.4%	54.2%	-5.9%
UTPB	20.8%	3.3%	44.6%	0.0%	43.2%	-7.7%
UTSA	12.6%	2.8%	53.4%	9.4%	52.1%	2.8%
UTT	23.1%	-2.4%	58.2%	8.6%	54.3%	0.1%

Graduation rates are for first-time, full-time, degree-seeking undergraduates who begin in the summer/fall of the enrollment year and graduate within four years from the same institution or six years from the same or another TX institution. The last two columns refer to four-year graduation rates of community college transfer students. These four-year transfer rates represent the percentage of first-time transfer students entering a UT institution with 30 or more semester credit hours who received an undergraduate degree within four years of enrolling at the same UT institution.

## Post-Graduation Earnings for Baccalaureate Graduates Found Working in Texas

*For graduates from 2002-2012, adjusted for inflation*

	1 <sup>st</sup> -Year Median Wage	5 <sup>th</sup> -Year Median Wage	10 <sup>th</sup> -Year Median Wage	Average Student Loan Debt	% FTICs with Loan Debt
UTA	\$46,783	\$54,781	\$63,419	\$19,283	53.8
UT Austin	44,650	57,132	75,003	22,778	46.2
UTB	39,485	47,148	49,783	12,224	56.1
UTD	45,172	57,563	70,813	15,597	58.8
UTEP	43,175	50,306	52,707	17,341	61.8
UTPA	42,261	49,198	52,177	12,781	58.5
UTPB	40,860	47,930	52,386	14,968	53.1
UTSA	39,692	50,097	54,850	24,242	64.3
UTT	42,234	49,018	52,918	18,010	46.3
UTSWMC	49,941	62,219	76,851		
UTMB	66,857	78,656	87,971		
UTHSCH	65,317	75,871	85,900		
UTHSCSA	57,278	66,719	75,543		
UTMDA	55,521	68,845	71,096		
<b>UT System</b>	<b>\$44,054</b>	<b>\$52,645</b>	<b>\$60,357</b>		

NOTES: Earnings data reflect data for those employed full-time, full-year in the state of Texas. For baccalaureate graduates, the average debt is estimated for those that initially enrolled at the institution as first-time-in-college students. 1<sup>st</sup>-Year looks at 11 cohorts. 5<sup>th</sup>-Year looks at 6 cohorts. 10<sup>th</sup>-Year looks at 2 cohorts. Overall, match rates (or those found working full-time, full-year in TX) for UT System at the first, fifth, and tenth year after graduation are 49%, 56% and 55% respectively. Student loan debt not included at HRIs because of limited number of first time in college students.

## Post-Graduation Earnings for Medical School Graduates Found Working in Texas

	Avg Student Loan Debt (see note)	% w/ Debt	1 <sup>st</sup> -Yr Median Wage	5 <sup>th</sup> -Yr Median Wage	10 <sup>th</sup> -Yr Median Wage
UTSWMC	\$103,581	85.7	\$49,173	\$138,096	\$260,937
UTMB	126,211	86.4	47,852	140,123	242,565
UT HSC-Houston	119,672	86.8	46,661	142,864	269,821
UT HSC-San Antonio	126,031	86.9	47,017	141,987	260,523

NOTES: Average student loan is the average of the student loan debt that borrowers owed at the time they earned their degree. The figures here only include debt incurred at this medical school.



## **FACULTY / EMPLOYEES**

### Content

Faculty Headcount by Status .....16

Employee Headcount.....17

Faculty Awards and Honors .....18

Faculty Appointments.....19

## Faculty Headcount by Status

Fall 2013

	Tenured/ Tenure-Track	Other Professional	Total
UTA	631	1,067	<b>1,698</b>
UT Austin	1,943	1,425	<b>3,368</b>
UTB	203	192	<b>395</b>
UTD	510	535	<b>1,045</b>
UTEP	509	667	<b>1,176</b>
UTPA	504	338	<b>842</b>
UTPB	89	144	<b>233</b>
UTSA	622	822	<b>1,444</b>
UTT	187	248	<b>435</b>
<b>Academic</b>	<b>5,198</b>	<b>5,438</b>	<b>10,636</b>
UTSWMC	400	1,819	<b>2,219</b>
UTMB	390	737	<b>1,127</b>
UTHSCH	475	1,317	<b>1,792</b>
UTHSCSA	470	1,206	<b>1,676</b>
UTMDA	616	1,579	<b>2,195</b>
UTHSCT		99	<b>99</b>
<b>Health</b>	<b>2,351</b>	<b>6,757</b>	<b>9,108</b>
<b>Total</b>	<b>7,549</b>	<b>12,195</b>	<b>19,744</b>



## Employee Headcount

Fall 2013

	Personnel	Faculty (all ranks)
UTA	2,243	1,698
UT Austin	11,274	3,368
UTB	685	395
UTD	2,471	1,045
UTEP	2,030	1,176
UTPA	1,479	842
UTPB	257	233
UTSA	3,322	1,444
UTT	886	435
<b>Academic</b>	<b>24,647</b>	<b>10,636</b>
UTSWMC	10,056	2,219
UTMB	9,674	1,127
UTHSCH	4,208	1,792
UTHSCSA	3,775	1,676
UTMDA	17,354	2,195
UTHSCT	816	99
<b>Health</b>	<b>45,883</b>	<b>9,108</b>
<b>System Admin</b>	<b>602</b>	<b>--</b>
<b>Total</b>	<b>71,132</b>	<b>19,744</b>

This excludes 23,485 student employees such as teaching assistants.

## Faculty Awards and Honors

*As of December 2014*

8 Nobel laureates ♦ 1 Shaw laureate ♦ 1 Abel Prize ♦ 2 Japan Prizes ♦ 2 Pulitzer Prize recipients

### Members

47 —the Institute of Medicine

44 —the National Academy of Sciences

59 —the National Academy of Engineering

59 —the American Academy of Arts and Sciences

35 —the American Law Institute

## Faculty Appointments

### Academic Institutions

54% of faculty have a 100% **Instructional** Appointment

1% of faculty have a 100% **Research** Appointment

44% of faculty have a **Mixed** Appointment

### Health Institutions

13% of faculty have a 100% **Instructional** Appointment

15% of faculty have a 100% **Research** Appointment

15% of faculty have a 100% **Patient Care** Appointment

56% of faculty have a **Mixed** Appointment

Mixed appointment would include some mixture of instruction, research, patient care (HRIs), academic support, and public service.



## RESEARCH / TECH TRANSFER

### Content

Research Expenditures.....22

Tech Transfer .....24

## Research Expenditures

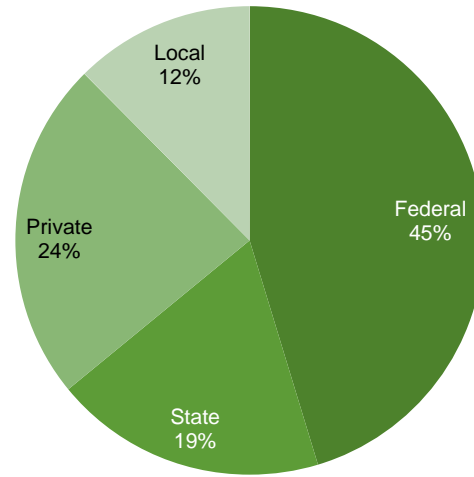
FY 2014

Total	\$2.5 billion
Academic	\$863 million
Health	\$1.6 billion

Research expenditures have increased 12% over the past five years, driven by increases from state, private, and local sources. Expenditures from federal sources have declined 9% over the same period.

Federal sources were 45% of research expenditures in 2013-14, down from 56% in 2009-10, and down nearly 20 points from levels in 2003-04.

by source



## Research Expenditures

FY 2014

	Federal	State	Private	Local	Total	vs FY 2009 Total	vs FY 2009 Federal
UTA	\$ 24,398,768	\$ 16,009,006	\$ 11,698,645	\$ 18,962,115	\$ 71,068,534	+ 27.8%	- 3.0%
UT Austin	332,757,829	43,307,623	114,704,210	59,536,497	550,306,159	+ 2.9	- 0.8
UTB	6,462,518	1,464,807	152,734	31,516	8,111,575	+ 35.1	+ 39.2
UTD	32,699,156	17,158,140	20,331,294	29,538,945	99,727,535	+ 51.6	+ 24.6
UTEP	35,304,485	16,639,650	10,607,884	11,941,335	74,493,354	+ 33.0	+ 20.1
UTPA	7,204,763	1,345,030	959,060	1,307,368	10,816,221	+ 20.6	+ 30.8
UTPB	482,860	494,221	300,126	43,668	1,320,875	- 8.4	+ 51.0
UTSA	23,041,222	11,488,842	4,253,323	6,455,204	45,238,591	- 2.8	- 14.6
UTT	388,745	278,992	117,330	648,213	1,433,280	- 56.5	- 81.6
<b>Academic</b>	<b>\$ 462,740,346</b>	<b>\$108,186,311</b>	<b>\$163,124,606</b>	<b>\$128,464,861</b>	<b>\$ 862,516,124</b>	<b>+ 10.8%</b>	<b>+ 1.5%</b>
UTSWMC	185,137,233	75,537,160	114,780,787	20,763,964	396,219,144	+ 3.3	- 10.7
UTMB	101,760,827	2,516,458	17,372,266	19,352,892	141,002,443	- 8.3	- 19.7
UTHSCH	136,144,701	32,731,624	42,680,997	9,813,006	221,370,328	+ 1.7	+ 0.8
UTHSCSA	89,303,518	9,618,698	29,101,822	15,785,787	143,809,825	- 25.7	- 30.4
UTMDA	158,986,303	241,306,782	222,324,050	113,576,296	736,193,431	+ 44.3	- 18.3
UTHSCT	3,448,301	1,571,148	1,408,308	4,567,039	10,994,796	- 22.9	- 50.3
<b>Health</b>	<b>\$ 674,780,883</b>	<b>\$363,281,870</b>	<b>\$427,668,230</b>	<b>\$183,858,984</b>	<b>\$1,649,589,967</b>	<b>+ 12.0%</b>	<b>- 15.5%</b>
<b>Total</b>	<b>\$1,137,521,229</b>	<b>\$471,468,181</b>	<b>\$590,792,836</b>	<b>\$312,323,845</b>	<b>\$2,512,106,091</b>	<b>+ 11.6%</b>	<b>- 9.3%</b>

## Technology Transfer

FY 2013

	New Invention Disclosures	U.S. Patents Issued	Licenses & Options Executed	Startup Companies Formed	Gross Revenue from IP
UTA	40	12	2	1	\$ 72,284
UT Austin	162	52	22	5	19,367,922
UTB	1	0	0	0	0
UTD	72	11	2	0	2,115,340
UTEP	34	5	2	2	9,910
UTPA	10	2	1	0	197,348
UTPB	0	0	0	0	0
UTSA	62	4	10	1	116,264
UTT	5	0	0	0	0
<b>Academic</b>	<b>386</b>	<b>86</b>	<b>39</b>	<b>9</b>	<b>\$21,879,068</b>
UTSWMC	96	26	30	0	13,600,565
UTMB	52	24	18	2	1,223,000
UTHSCH	64	9	29	3	6,537,984
UTHSCSA	51	3	10	3	1,375,853
UTMDA	171	28	17	1	17,309,264
UTHSCT	3	0	0	1	0
<b>Health</b>	<b>437</b>	<b>90</b>	<b>104</b>	<b>10</b>	<b>\$40,046,666</b>

823

new invention disclosures

176

U.S. patents issued

143

licenses and options executed

19

startup companies formed

\$62 million

in gross revenue from intellectual  
property (IP)



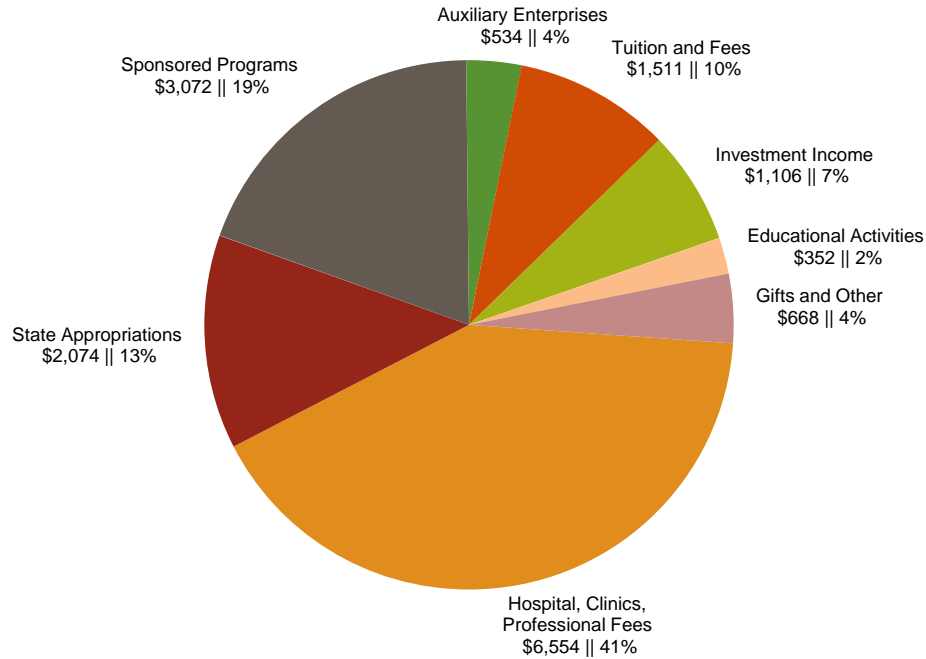
## **BUDGET / FINANCE**

### Content

Budget: Revenues .....	26
Budget: Expenses .....	27
Institutional Budgets .....	28
Funding Trends - Revenues per FTE Student .....	29
Endowment Value & Annual Giving .....	30
Patient Care .....	31

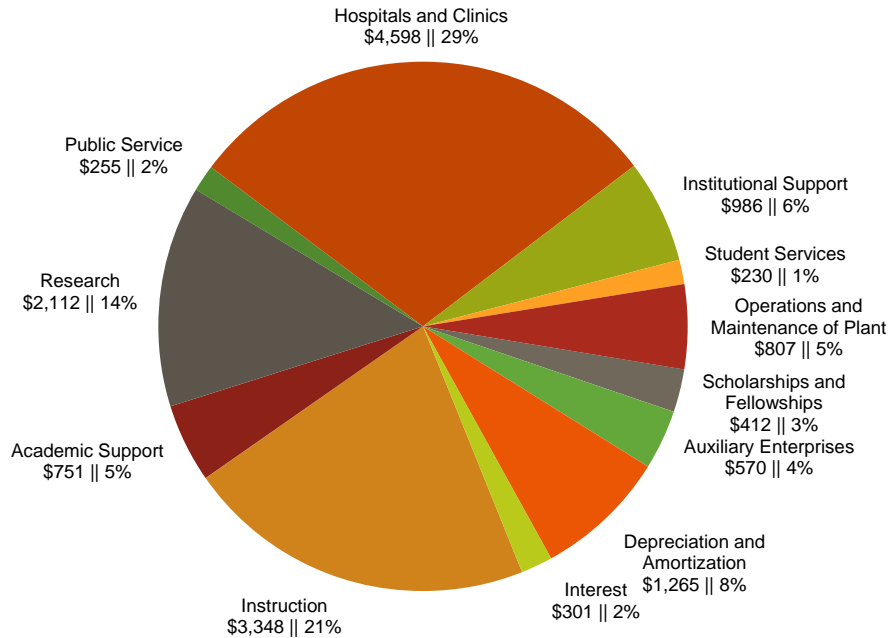
## Budget: Revenues = \$15.9 billion

FY 2015 (in millions)



## Budget: Expenses and Debt Service = \$15.6 billion

FY 2015 (in millions)



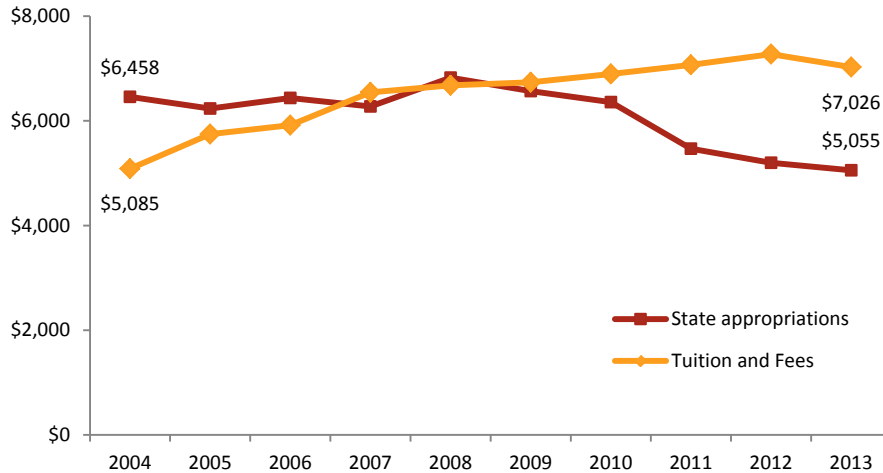
## Institutional Budgets

FY 2015 (in millions)

	Total Budget Expenditures	From General Revenue (GR)	GR as % of Total
UTA	\$ 534.5	\$ 119.6	22.4%
UT Austin	2,693.2	316.9	11.8
UTB	126.1	37.3	29.6
UTD	545.6	113.5	20.8
UTEP	402.1	97.3	24.2
UTPA	271.3	78.7	29.0
UTPB	66.9	29.7	44.4
UTSA	489.0	123.7	25.3
UTT	118.6	37.2	31.3
<b>Academic</b>	<b>\$ 5,247.3</b>	<b>\$ 953.9</b>	<b>18.2%</b>
UTSWMC	2,239.2	169.4	7.6
UTMB	1,733.3	343.9	19.8
UTHSCH	1,213.7	199.2	16.4
UTHSCSA	781.9	176.2	22.5
UTMDA	4,073.6	185.4	4.6
UTHSCT	164.6	44.1	26.8
<b>Health</b>	<b>\$10,206.3</b>	<b>\$1,118.2</b>	<b>11.0%</b>
<b>System Admin</b>	<b>\$ 180.7</b>	<b>\$ 1.5</b>	<b>0.9%</b>
<b>Total</b>	<b>\$15,634.3</b>	<b>\$2,073.6</b>	<b>13.3%</b>

## Funding Trends - Revenue per FTE Student (Academic Institutions)

FY 2013, Inflation-Adjusted to 2013



State Appropriations per full-time equivalent (FTE) student have declined from **56%** in 2004 to **42%** in 2013.

Tuition and Fees have increased from **44%** to **58%** of revenues per FTE student.

Notes: UT System totals do not include UT Brownsville. Tuition and fee revenue is net of scholarship and fellowship discounts and waivers. State Appropriations include general revenue support from the State of Texas for instruction and operations, infrastructure support, special items, tuition revenue bond debt service, and group health insurance and employee benefits. All revenue and expense data were adjusted to the FY 2013 base year for inflation using the Consumer Price Index - Urban (CPI - U) for September of each year.

## Endowment Value & Annual Giving

FY 2014 (in millions)

	Endowment Value	5-Year Change	Annual Giving
UTA	\$ 119.9	75.8%	\$ 15.0
UT Austin	11,340.8	76.2	529.4
UTB	10.3	40.3	1.5
UTD	387.4	69.0	55.6
UTEP	221.0	44.3	18.5
UTPA	72.0	38.1	3.9
UTPB	43.1	156.2	6.6
UTSA	113.9	88.9	15.5
UTT	78.9	25.7	5.9
<b>Academic</b>	<b>\$12,387.3</b>	<b>74.8%</b>	<b>\$ 651.9</b>
UTSWMC	1,661.5	26.8	127.9
UTMB	549.3	28.6	41.0
UTHSCH	256.1	49.7	37.2
UTHSCSA	485.5	30.4	44.6
UTMDA	1,236.7	28.5	163.2
UTHSCT	47.0	25.2	0.9
<b>Health</b>	<b>\$ 4,236.1</b>	<b>29.1%</b>	<b>\$ 414.8</b>
<b>System Admin</b>	<b>\$ 9,969.0</b>	<b>100.7%</b>	<b>\$ 2.4</b>
<b>Total</b>	<b>\$26,592.3</b>	<b>73.4%</b>	<b>\$1,069.1</b>

The Permanent University Fund

2.1 million acres

Market value as of 08/31/13

**\$14.9 billion**

Market value as of 08/31/14

**\$17.4 billion**

#### About Endowment Value:

These totals include endowment funds managed by UTIMCO as well as those held in trust by other entities, as reported to the Council for Aid to Education each year. (Information offered on endowment funds not managed by UTIMCO is reported by each institution). Endowments for UT Austin include 30% of the Permanent University Fund (PUF) market value and endowments for the UT System include 37% of the PUF market value. The remaining 33%, or one-third, belongs to TAMU per the Texas Constitution. Endowment values for UT System Administration exclude the Permanent Health Fund, which is reported by the institutions.

## Patient Care

FY 2013

	Outpatient Visits	Hospital Days
UTSWMC	2,210,748	509,846
UTMB	693,930	121,012
UTHSCH	1,279,023	270,776
UTHSCSA	911,114	262,194
UTMDA	1,338,706	207,555
UTHSCT	217,906	7,610
<b>Total</b>	<b>6,651,427</b>	<b>1,378,993</b>

41% of revenues for the UT System budget come from hospital, clinics, and professional fees related to patient care. Hospitals and clinics are 29% of total expenses.

